

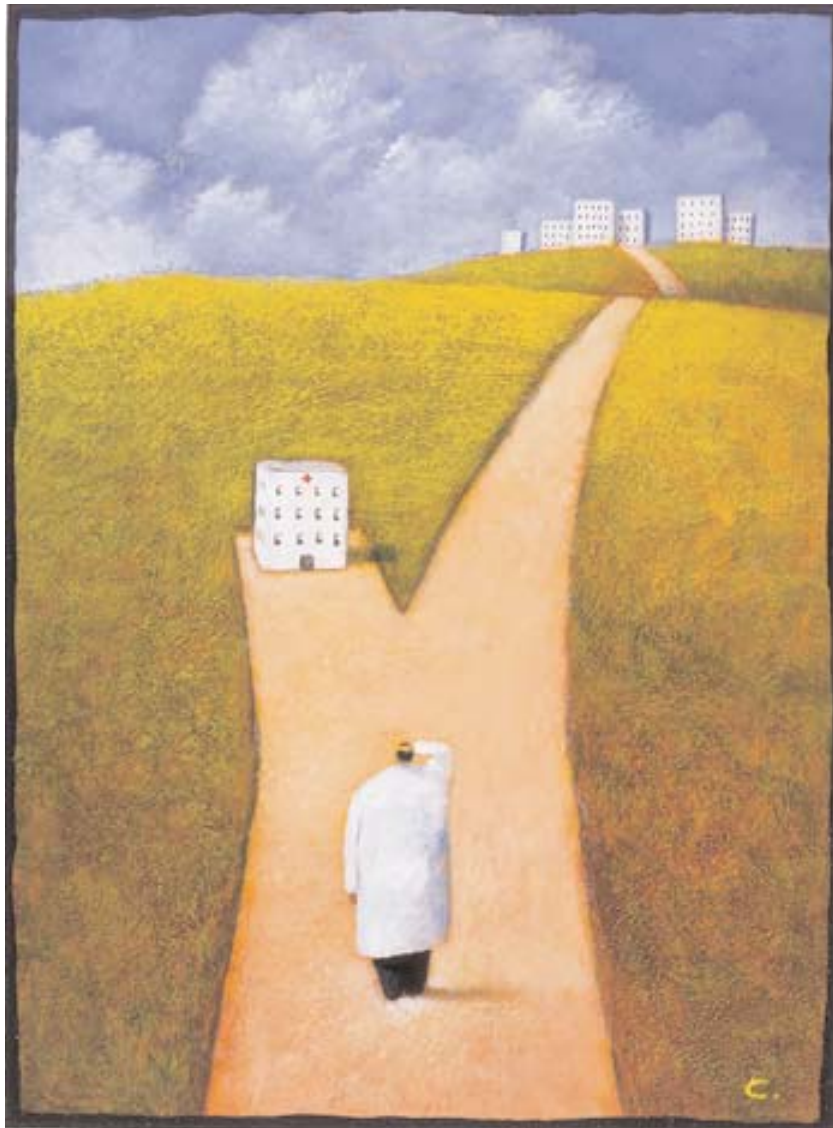
CAREER INSIGHTS MD

THE MEDICAL STUDENT'S GUIDE TO RESIDENCIES

WINTER 2005/SPRING 2006

PROFILES

In-Depth Descriptions of Residency Programs,
Teaching Hospitals, and Associations



The Print Companion to the CareerMD.com Website



AABB is an international, not-for-profit association dedicated to the advancement of science and the practice of transfusion medicine and related biological therapies. Jumpstart your career by joining AABB and enjoy the numerous benefits including a discount on membership for physicians in residency.

Our membership consists of approximately 8,000 individuals, including physicians, scientists, administrators, medical technologists, nurses, researchers and blood donor recruiters.

To join, contact

+1.866.222.2498 (within the US)
+1.301.215.6489 (outside the US)
or visit www.aabb.org



Advancing Transfusion and
Cellular Therapies Worldwide

**NATIONAL
BLOOD FOUNDATION**

**National Blood
Foundation Scientific
Research Grants Program**

Since 1985, NBF has awarded \$3.7 million in grants to 127 scientific researchers. Priority is given to new investigators and innovative projects with the potential to have a practical impact on patients and donors in transfusion medicine.

A maximum of \$65,000 per grant is available to fund one- or two-year scientific research projects in the field of transfusion medicine.

Applications for the 2007 Scientific Research Grants in Transfusion Medicine are due by December 13, 2006.

For more information, contact NBF at +1.301.215.6552 or email nbf@aabb.org.

CAREER INSIGHTS

THE MEDICAL STUDENT'S GUIDE TO RESIDENCIES

WINTER 2005/SPRING 2006

RESIDENCY PROGRAM PROFILES

Multiple Specialties		Page	Pediatrics		Page
• Advocate Lutheran General Hospital/Advocate Lutheran Children's Hospital, Park Ridge, IL.....	Back cover		• St. Joseph's Hospital & Children's Health Center, Phoenix, AZ.....		13
• Christiana Care, Delaware**.....	Back cover		• University of Oklahoma, Oklahoma City, OK.....		13
• Cuyahoga Falls General Hospital, Cuyahoga Falls, OH**.....	1		Physical Medicine & Rehabilitation		
• Genesys Regional Medical Center, Grand Blanc, MI**.....	1		• Detroit Medical Center/Wayne State University, Detroit, MI.....		14
• Michigan State University Kalamazoo Center for Medical Studies, Kalamazoo, MI**.....	18		Preventive Medicine		
• North Shore-Long Island Jewish Health System, New York and Long Island, NY.....	2		• Johns Hopkins Bloomberg School of Public Health, Baltimore, MD.....		14
• University of Missouri-Kansas City School of Medicine, Kansas City, MO.....	3		Psychiatry		
Emergency Medicine			• Banner Good Samaritan Medical Center, Phoenix, AZ**.....		15
• Lehigh Valley Health Network, Bethlehem, PA**.....	4		• The Institute of Living/Hartford Hospital, Hartford, CT.....		16
Family Medicine			• Upstate Medical University, Syracuse, NY.....		16
• Akron General Medical Center, Akron, OH.....	4		Surgery		
• Florida Hospital-East Orlando, Orlando, FL**.....	4		• Baystate Medical Center, Springfield, MA.....		17
• Kingman Regional Medical Center, Kingman, AZ**.....	5		• St. Elizabeth's Medical Center, Brighton, MA.....		18
• Meharry Medical College Family Medical Residency, Nashville, TN.....	5		• St. Joseph Mercy-Oakland, Pontiac, MI.....		18
• Durant Family Medicine Clinic, Durant, OK**.....	7		• Yale-New Haven Medical Center, New Haven, CT.....		19
• Saint Joseph Regional Medical Center, South Bend, IN**.....	6		Urology		
• Union Hospital Family Residency, Terra Haute, IN.....	7		• Stanford University, Palo Alto, CA.....		20
• Westchester General Hospital, Miami, FL**.....	7		• University of Arizona, Tucson, AZ.....		21
Internal Medicine			• University of Connecticut, Farmington, CT.....		21
• University of South Carolina/Palmetto Health, Columbia, SC.....	8		• University of Mississippi Medical Center, Jackson, MS... ..		22
• University of Southern California, Los Angeles, CA.....	8		Organizations & Associations		
Neurology			• Academy of Clinical Laboratory Physicians and Scientists.....		11
• University of Rochester Medical Center, Rochester, NY... ..	9		• The American Association for the Surgery of Trauma.....		17
Obstetrics & Gynecology			• American Association of Blood Banks.....		Front cover
• Lehigh Valley Hospital, Allentown, PA.....	10		• The American Headache Society.....		9
• Riverside Methodist Hospital, Columbus, OH.....	10		• American Urological Association, Inc.....		21
Pathology			• The Doctor Job.....		24
• Berkshire Medical Center, Pittsville, MA.....	11		PERSPECTIVES		
• Oregon Health & Science University, Portland, OR.....	12		• Medical Student Perspectives: "The New York City Free Clinic: A Model for Comprehensive Free Healthcare," by Deepti Anbarasan, First Year Medical Student.....		24
• University of Utah, Salt Lake City, UT.....	12				

** Includes osteopathic or dually-accredited programs

CUYAHOGA FALLS GENERAL HOSPITAL (CFGH)

Cuyahoga Falls, OH

FOR MORE INFO, CONTACT:

*Cuyahoga Falls General Hospital
Robert Kent, D.O.,
Director of Medical Education
330-971-7225
www.summahealth.org*

ROBERT KENT, D.O



Director of Medical Education

Cuyahoga Falls General Hospital (CFGH) is a suburban community hospital located in northeastern Ohio featuring a strong Osteopathic Graduate Medical Education Program. CFGH is a founding member of CORE, The Centers for Osteopathic Research and Education (CORE), which links 13 Ohio Osteopathic teaching hospitals, the Ohio University College of Osteopathic Medicine and three other Colleges of Osteopathic medicine.

Founded in 1943, CFGH has a rich history of providing excellent osteopathic education and training because of the enduring commitment of dedicated attending physicians.

In 2001 CFGH became a full member of the Summa Health System. CFGH medical staff includes more than 300 physicians. 80,000 patients were served in 2005 in a host of venues, including emergency, acute, critical and outpatient settings.

CFGH's Internship and Residency programs are fully accredited by the AOA. Seven residency programs are offered at CFGH: dermatology, internal medicine, emergency medicine, family practice, general surgery, orthopedic surgery, ob/gyn.

The internal medicine residency program is accredited by the ACOI and approved for 6 positions. The 36-month program includes the internal medicine specialty track internship. All residents in the internal medicine program rotate through all specialties of medicine. Our internal medicine residency program provides exposure in both the inpatient and outpatient settings including a minimum of 44 weeks per year in the ambulatory setting.

The family practice residency program accredited by the ACOFP is approved for 6 positions. The major portion of the training time is spent providing comprehensive primary care for patients in an ambulatory setting.

Our residents rotate among several area teaching institutions, including Summa Health System Hospitals, the Cleveland Clinic, and the Children's Hospital Medical Center of Akron. Residents are exposed to a diverse population and a broad spectrum of medical diagnoses in adults and adolescent patients.

Be part of a superior academic program as evidenced by the success of our residents who scored top in the country in in-service exams. CFGH residents also scored in the 99 percentile in Complex III exams in the academic year 2004-2005.

For additional information please visit our medical education website at www.summahealth.org or contact Robert Kent, D.O., Director of Medical Education, at 330-971-7225.

GENESYS REGIONAL MEDICAL CENTER

Grand Blanc, MI

FOR MORE INFO, CONTACT:

*Kathy Johnson, Coordinator
Undergraduate Medical Education
Genesys Regional Medical Center
810-606-7124*

Genesys Regional Medical Center is a state-of-the-art 410 bed facility conveniently located off I-75 in a suburban setting in Grand Blanc, Michigan, between Detroit and Flint. You will experience lots of hands-on opportunities with dedicated faculty to support your individual learning program. Genesys offers the latest technology and equipment serving a diverse patient population with extensive pathology.

EXPLORE THESE GME OPPORTUNITIES:

- Traditional Internship
- Track Internship/Residencies:
 - ENT
 - FP (AOA & ACGME accredited)
 - IM
 - Ob/Gyn
- Linked Internship/Residencies:
 - EM
 - General Surgery
 - Orthopedic Surgery
- Additional Residencies:
 - Dermatology
 - Ophthalmology
 - Podiatry
- Fellowships:
 - GI
 - Pulm/Critical Care
 - Sports Med

OUR VOLUMES SUPPORT OUR TRAINING PROGRAMS:

- ER visits 101,510
- OB deliveries 2,927
- Surgeries 23,211
- Admissions 25,932
- Teaching faculty 240

Learn more about our style of medical education by visiting our website:

www.genesys.org

If you have additional questions, please call (800) 233-2863.

NORTH SHORE-LONG ISLAND JEWISH HEALTH SYSTEM

New York City and Long Island, New York

FACTS AT A GLANCE

- North Shore-LIJ Health System has 3 tertiary hospitals; 8 community hospitals; two specialty care hospitals; many ancillary facilities
- Third largest secular, non-for-profit health system in the United States
- Services a combined population of over 5.2 million in urban and suburban areas
- The health system is affiliated with Albert Einstein College of Medicine and New York University School of Medicine. We have over 1,200 residents and fellows and 90 graduate medical education-training programs

RESIDENCY PROGRAMS OFFERED

- Cardiothoracic Surgery
- Diagnostic Radiology
- Emergency Medicine
- Family Practice
- General Surgery
- Internal Medicine
- Neurology
- Neurosurgery
- Obstetrics & Gynecology
- Ophthalmology
- Orthopaedic Surgery
- Pathology
- Pediatrics
- Psychiatry
- Urology
- Dental, General
- Oral/Maxillofacial Surgery
- Oral Pathology
- Pediatric Dental Medicine
- Podiatry



LAWRENCE SMITH, M.D.,
Chief Academic Officer and
Sr. V.P. of Academic Affairs

The North Shore-Long Island Jewish Health System is the premier health network of Long Island, Queens and Staten Island. Aligned as one organization, there are 15 hospitals in the health system making it the third largest secular, not-for-profit health system in the United States. Nine of our hospitals are teaching facilities that are involved in both graduate and under-graduate medical education, including North Shore University Hospital, Long Island Jewish Medical Center, Schneider Children's Hospital, Zucker-Hillside Hospital, Glen Cove Hospital, Forest Hills Hospital, Plainview Hospital, Southside Hospital and Staten Island University Hospital. These outstanding institutions are dedicated to quality medical education, especially at the graduate level, coupled with compassionate and sophisticated patient care.

The health system maintains relationships with multiple medical schools including formal affiliations with Albert Einstein College of Medicine and New York University School of Medicine. We also have formal agreements for student clinical rotations with SUNY Downstate School of Medicine, SUNY Health Science Center at Stony Brook and New York College of Osteopathic Medicine.

Through our teaching institutions, the health system is one of the largest clinical medical educational institutions in the country responsible for over 1,200 residents and fellows and 90 graduate medical education-training programs. In addition, the health system supports hundreds of students from our affiliated medical schools on required clerkships, elective clinical rotations and mentored experiences in basic and clinical research.

The Feinstein Institute for Medical Research conducts basic and clinical research within the health system. It is in the top sixth percentile of all institutions that receive NIH funding. Its research programs are world-renowned especially in the areas of autoimmune diseases, neurodegenerative diseases, sepsis and psychiatric diseases. The annual operating budget of the institute is approximately \$50,000,000 and includes an NIH-designated GCRC. The institute can award PhD degrees in molecular medicine to candidates who already hold a medical degree and choose

FOR MORE INFO, CONTACT:

North Shore-Long Island Jewish Health System
Office of Academic Affairs
125 Community Drive
Great Neck, NY 11021
516-465-3192 516-465-3190 fax
www.northshorelij.com

to pursue a career in clinical transitional research.

The health system is also committed to the broad education of a wide array of health care professionals other than physicians, including dentists, podiatrists, physician assistants, nurses and medical administrators. To continually upgrade the skills of all employees, the health system maintains a Center for Learning and Innovation, and it has a joint Masters Degree program in Health Care Management with Hofstra University.

Medicine is a team effort and an important aspect of graduate training at the health system. The strong mix of residents who come from across the United States, with a variety of experiences and cultural backgrounds, add to the strength of the educational environment. Training takes place in a positive work environment, with outstanding faculty who are national and international leaders in their field. The educational environment is supported by the Office of Academic Affairs, ensuring that there is a well-trained, enthusiastic faculty and appropriate institutional support. This enables residents to find their day-to-day challenges and responsibilities exciting and focused on learning.



UNIVERSITY OF MISSOURI-KANSAS CITY SCHOOL OF MEDICINE

Kansas City, MO

RESIDENCIES

- **Anesthesiology**
- **Emergency Medicine**
- **Family & Community Medicine**
- **Internal Medicine**
- **Medicine/Pediatrics**
- **Obstetrics/Gynecology**
- **Ophthalmology**
- **Oral & Maxillofacial Surgery**
- **Orthopaedic Surgery**
- **Pathology**
- **Pediatrics**
- **Psychiatry**
- **Radiology**
- **Surgery**

FACTS AT A GLANCE

- All UMKC residency and subspecialty residency programs are fully accredited by the Accreditation Council for Graduate Medical Education.
- The UMKC School of Medicine partners with four of the Kansas City area's most respected healthcare institutions. This significantly increases the diversity of clinical experiences available.
- Together, the School of Medicine partner hospitals offer more than 1,000 physicians/faculty and 1,300 hospital beds. On an annual basis there are more than 50,000 patient admissions, 830,000 outpatient visits and 150,000 emergency room visits.
- Research opportunities are diverse, ranging from shock/trauma to cardiovascular disease, to women's health.
- Known as the Heart of America, Kansas City is a bi-state metropolitan area that straddles the Missouri-Kansas state line and includes more than 136 cities and 11 counties. Approximately 1.8 million people live in the metro area.



BETTY DREES, M.D., F.A.C.P.,
Dean

Thank you for your interest in the graduate medical education programs at the University of Missouri-Kansas City School of Medicine.

The GME programs at UMKC are designed to direct our residents toward the successful completion of their specialty Board requirements and to provide the necessary training and support to be clinically and academically successful.

The UMKC School of Medicine offers 14 residency and 19 subspecialty residency programs in both adult and pediatric medicine. Each program has been tailored to incorporate the key elements of hands-on clinical experience, didactic teaching, research, and professional and peer interaction into a clinical environment ideal for developing the techniques to become a competent, skilled physician.

Our relationship with our partner teaching hospitals is one of the major benefits of the graduate medical education program at UMKC. Rather than operate our own hospital, the School partners with four of the areas most respected healthcare providers. As a result, residents have the opportunity to gain experience in a variety of healthcare environments: a busy urban general hospital (Truman Medical Center Hospital Hill) and a community hospital (Truman Medical Center Lakewood); a large tertiary private teaching hospital (Saint Luke's Hospital of Kansas City); a children's hospital (Children's Mercy Hospitals and Clinics); and a comprehensive psychiatric care facility (Western Missouri Mental Health Center).

From high tech to soft touch, virtually all approaches to health care can be found at these facilities. Residents may rotate through one or more of the institutions depending on their program, gaining exposure to a wide diversity of patients, both in terms of disease processes and socioeconomic backgrounds. All are in proximity to the UMKC School of Medicine.

UMKC residents are also encouraged to participate in the widespread research projects taking place through the School and

FOR MORE INFO, CONTACT:

UMKC School of Medicine
Office of Graduate Medical Education
2411 Holmes Street
Kansas City, Missouri 64108-2792
816-235-6626 816-235-6629 fax
umkcgmeoffice@umkc.edu
www.med.umkc.edu/residency/graduate/

the partner institutions. Kansas City and the University have made a strong commitment to actively support the advancement of the life sciences through collaborative and cutting edge research programs. Research grants recently received by the School of Medicine include a multi-year \$600,000 grant from the US Department of Health and Human Services along with designation as a National Center of Excellence in Women's Health; a \$750,000 grant from the American Lung Association for continued funding of the Asthma Clinical Research Center; and \$2.1 million from the 2005 federal defense budget subsidizing continued research in shock/trauma treatment.

The UMKC School of Medicine is a pioneer in medical education with innovations such as a docent system and a six-year combined baccalaureate/doctor of medicine program that challenge and encourage medical students to become competent, caring physicians. Our graduate medical education programs provide similar learning experiences that prepare physicians for a new era in health care.

ABOUT KANSAS CITY

Kansas City has established itself as a booming business community with major companies such as H&R Block, Russell Stover Candies, American Century Companies, Sprint, Cerner Corporation and Hallmark Cards all getting their start here. Kansas City is also recognized for its scientific research and life sciences initiatives. The Kansas City Life Sciences Institute, Stowers Institute for Medical Research and Midwest Research Institute are among the leaders.

Kansas City offers something for everyone - museums, historical monuments, the Kansas City Zoo, musical venues, live theater, amusement parks, shopping, more than 600 parks and 24 lakes, and a wide array of restaurants and cuisine. Professional sports are well represented with the baseball Royals, football Chiefs, and soccer Wizards and Attack. The Kansas Speedway, a \$197 million, 1.5 mile tri-oval track in nearby Kansas City, Kans., is the site of major NASCAR and Busch racing series events.

LEHIGH VALLEY HEALTH NETWORK (LVHN)

Bethlehem, PA

FOR MORE INFO, CONTACT:

Lehigh Valley Hospital - Muhlenberg
Dawn Yenser, Program Coordinator
5th floor Residency Suite
2545 Schoenersville Road
Bethlehem, PA 18017
484-884-2888 484-884-2885 fax
www.lvhemres.com

The Lehigh Valley Health Network (LVHN) offers superb emergency medicine residency training. Department of Emergency Medicine is focused on providing diverse educational experience for our osteopathic emergency medicine residents leading to board certification. Each resident will have ample opportunity to develop clinical skills through formal education and direct patient care with an emergency medicine team that cares for over 112,000 patients each year.

The hospital network has over 800 beds in operation and the educational experience is broadened by an aeromedical transport system that conducts 3,000 flights annually for the region's Level I trauma center with additional pediatric privileges. Unique experience is also available at the George E. Moerkirk Emergency Medicine Institute that trains over 10,000 students annually and uses sophisticated teaching tools that include a human patient simulator.

As part of a teaching network that is affiliated with the Penn State University College of Medicine and Philadelphia College of Osteopathic Medicine, Lehigh Valley Hospital - Muhlenberg campus has a well organized clinical faculty that is committed to research and providing a diverse, enriching experience that residents need for a successful professional career in Emergency Medicine.

For more information, please visit our website at www.lvhemres.com or contact Dawn Yenser, Program Coordinator, at 484-884-2888.

AKRON GENERAL MEDICAL CENTER

Akron, OH

FOR MORE INFO, CONTACT:

Mark H. Belfer, DO, FFAFP,
Director
Akron General Medical Center
400 Wabash Avenue
Akron, OH 44307
(330) 344-7671
mbelfer@agmc.org
www.akrongeneral.org

Akron General Medical Center is a member of the Akron General Health System, one of the area's largest integrated healthcare networks. Our residents are educated in a very modern, state-of-the-art facility with vast resources due to being part of such a system. Again in 2005, our institution was named as one of "America's 50 Best Hospitals" in U.S. News and World Report. Our faculty is young, energetic, extremely dedicated and come from diverse backgrounds with many talents, providing education in a collegial atmosphere. At Akron General's Center for Family Medicine, you will find a large updated facility, located on the hospital campus, equipped with physician office laboratories in each module. You will be able to learn and perform video colposcopy, video flex sigmoidoscopy and nasopharyngoscopy, casting and splinting, laceration repair, skin lesion excision, cryotherapy and electrocautery. We have a large library and spacious offices for residents. Our office and computer system provide a functional teaching environment. We take pride in providing a modern, fully integrated computer network, linking directly with the hospital and Internet from each terminal. Practice management, pharmacology, and behavioral science curricula are taught by experts in their fields. Our graduates are comfortable in their roles as competent and effective family physicians and ready to assume their practices. We invite you to train at one of the best residency programs available.

FLORIDA HOSPITAL - EAST ORLANDO

Orlando, FL

FOR MORE INFO, CONTACT:

Florida Hospital - East Orlando
Joseph D. Allgeier, DO
Program Director
7975 Lake Underhill Rd, Ste 210
Orlando, FL 32822
joseph.allgeier.do@flhosp.org
www.floridahospitalresidency.com

Florida Hospital East Orlando is a 155-bed acute care community hospital which is part of the seven campus, 2801-bed Florida Hospital health care system. In 60 years as an osteopathic hospital, it maintains a long history and reputation of excellence in its medical education programs. Through its Internship, Family Medicine and Integrated FM/NMM residencies, residents are exposed to a wide range of clinical experiences in both inpatient and ambulatory settings. In addition, Florida Hospital East Orlando trains third and fourth year core and elective osteopathic medical students from across the United States. There are 12 full-time faculty members (Family Medicine, Geriatrics, Pediatrics, Behavioral Medicine, Internal Medicine, OMM, Pharmacology, and chaplain). There are also Residency clinics in Pediatrics, Family Medicine, Geriatrics and OMM, and inpatient residency services in Internal Medicine, Family Medicine, Pediatrics, Geriatrics and OMM.

POSTGRADUATE PROGRAMS

Family Medicine Residency and Internships--approved and funded for eight (8) Family Medicine track Interns and sixteen (16) Family Medicine Residents.

- Annual Stipend:
 - OGME-1: \$40,000
 - OGME-2: \$42,000
 - OGME-3: \$44,000
 - OGME-4: \$45,000
- Benefits: Life, health, and malpractice insurance; Dental; Eye, Disability insurance and pension options; meals; lab coats; graduated CME allowance; Palm Pilots; paid vacation; up to \$1500 moving allowance.
- For more information, call (407) 303-8683 or visit our web site: <http://www.floridahospitalresidency.com>.

KINGMAN REGIONAL MEDICAL CENTER

Kingman, AZ

FOR MORE INFO, CONTACT:

Kingman Regional Medical Center
Lori Hopper
928-757-0649
lhopper@azkrmc.com



*Serving Our Community with
Compassion and Commitment*

Kingman Regional Medical Center is a non-profit, community-owned facility with 213 licensed beds. It includes a range of advanced health and wellness services, including a wellness/fitness center, a primary care physician practice, advanced medical programs in cardiology, cancer and rehabilitation, as well as home health and hospice care.

The KRMC Graduate Medical Education (GME) programs offer Osteopathic intern and resident physicians the opportunity to specialize in Family Practice. They experience the aspects unique to healthcare in a rural setting, but in a facility with resources and attributes that rival those in urban areas.

At the Family Practice Residency Clinic, our residents treat patients under the supervision of Board Certified Family Practitioners. Additionally, many physician specialists in Kingman and the surrounding areas are dedicated to participation in the training of our residents as they rotate through various medical specialties each month.

Join us in Kingman - a cozy, but growing, community in the high desert of northwestern Arizona. Kingman offers an abundance of mountain views, moderate temperatures, four seasons and outdoor enjoyment year round. It provides easy access to mountains, water and big-city shopping while maintaining the small town feel with friendly people.

For more information email lhopper@azkrmc.com or call 928/757-0649.

MEHARRY MEDICAL COLLEGE FAMILY MEDICINE RESIDENCY

Nashville, TN

FOR MORE INFO, CONTACT:

Meharry Medical College
Joy Hayes,
Residency Coordinator
Dept of Family & Community Medicine
1005 Dr. D.B. Todd Jr. Blvd.
Nashville, TN 37208-3599
615-327-5525 615-327-5634 fax
chayes@mmc.edu

The Meharry Medical College Family Medicine Residency Program in Nashville, TN is based at Nashville General Hospital providing health services and care to the East Nashville community. The college, established in 1876, occupies a 27-acre setting in the heart of Nashville, capital of Tennessee. The Meharry Family & Community Medicine Residency was established in 1974. Our goal is to train family physicians to respond competently to the needs of their patients and families, to develop qualified community and national leaders, and offer comprehensive services with special attention to the poor and underserved.

Strengths of our program include rotations and affiliations with a variety of clinical settings. We offer a mix of patients representing a variety of socioeconomic, racial, and health issues. These affiliations include the urban Nashville General Hospital, Children's Hospital at Vanderbilt, Vanderbilt University, community clinics, rural hospitals, and electives at Middle TN Medical Center. Our urban Family Medicine center is in Nashville and our suburban Family Medicine center is located at Madison, TN, around 12 miles from downtown.

Our faculty are board certified family physicians who perform the full spectrum of Family Medicine including Obstetrics. Clinical psychologists, social workers, and nutritionists are also part of our faculty and staff. Other areas of interest are strong research and scholarly activity, procedures, hospitalist care and Pediatrics. We are strongly supported by our medical schools and hospital, and our graduates span the nation and middle TN. CME activities are available onsite, at Meharry or Vanderbilt Medical Center.

Meharry Family & Community Medicine Residency Program provides comprehensive training and will prepare you to be a confident and competent physician in your chosen clinical setting. Our training includes outpatient procedural training such as: colposcopy and OB ultrasound and inpatient procedural training to include central lines and pleural tap.

We offer strong rotations in the outpatient and inpatient setting with adequate time to enjoy family life and what our Music City offers. We hope to meet you here in beautiful Middle Tennessee and share our excitement and commitment.

ROGER ZOOROB, M.D., M.P.H., F.A.A.F.P.



Chair & Program
Director

MILLARD COLLINS, M.D.,



Assistant Professor &
Associate Program
Director

SAINT JOSEPH REGIONAL MEDICAL CENTER

South Bend, IN

FACTS AT A GLANCE

- The people - residents who are serious about their post-graduate education, great faculty, receptive specialists who like to teach, and the support staff who keep us all on track
- The opportunities to learn pro cedures
- The humane call schedule and the "real" time off
- The money and the benefits
- Location, location, location

ROTATION SCHEDULE

FIRST YEAR: One half day per week in the Family Medicine Center is required

- 1 month - Family Medicine Center (includes orientation)
- 3 months - Medicine
- 2 months - Pediatrics
- 2 months - Obstetrics
- 1 month - ER (140 hours required)
- 1 month - Cardiology
- 1 month - Surgery
- 1 month - Radiology & Rehabilitation (combined rotation month)
- Two week International health Track (IHT) experience possible during this month.

SECOND YEAR: Two half days per week in the Family Medicine Center are required

- 3 months - medicine
- 2 months - Pediatrics
- 2 months - Obstetrics
- 1 month - Community Medicine
- 1 month - ICU
- 1 month - Gynecology (140 hours required)*
- 1 month - Orthopaedics (140 hours required*)
- 1 month - Dermatology

THIRD YEAR: Three half days per week in the Family Medicine Center are required

- 6 months - Electives (1 month can be IHT)
- 2 weeks - Gynecology (if needed)*
- 2 weeks - Orthopaedics (if needed)*
- 1 month - ENT/Ophthalmology (combined rotation month)
- 1 month - Medicine chief
- 2 weeks - Sports medicine
- 1 month - Surgery
- 2 weeks - Urology
- 2 weeks - Business Office
- 2 weeks - GI

REQUIRED LONGITUDINAL EXPERIENCES:

NICU, Geriatrics, Practice Management (60 hours), Human Behavior and Psychiatry, Family Medicine Project

*It is possible that Orthopaedics and Gynecology will require more than one month each to achieve the required hours requirement. If more time is needed to achieve this, the elective time may need to be used.



MARTIN WIESCHHAUS, M.D., F.A.A.F.P.,

Program Director

The Family Practice Medicine Residency Program at Saint Joseph's is unopposed, and includes both an accredited allopathic (M.D.) and osteopathic (D.O.) Family Medicine Residency. We provide family-centered care, taking into account the spiritual, psychological, sociological and physical need of our patients. The goals of the residency are:

- To provide a quality program of training and education with a balance between patient service and the active pursuit of knowledge
- To impart to residents the knowledge and skills necessary to demonstrate competency in both clinical and procedural skills
- To train in family-centered care that addresses the longitudinal health care needs of the residents' patients, focusing on comprehensive preventive health care
- To provide our residents with an environment that fosters a commitment to providing care to the medically underserved
- To foster behaviors consistent with the high level of professionalism expected of a family physician and to help residents balance their personal and professional lives
- To provide a forum for residents to demonstrate their clinical acumen and scholarly pursuits through teaching and supervising their colleagues
- To develop in residents an attitude that fosters their maintenance of high quality medical skills after residency

Our graduates who sit for Boards following their residency at Saint Joseph Regional Medical Center have consistently passed. We provide a high degree of hands-on clinical experience including obstetrics with a high-risk clinic. Workshops and training in procedure skills included:

- ALSO
- ACLS
- Casting
- Colposcopy
- Dermatology
- EKG-Stress Testing
- PALS
- Nasolaryngoscopy
- NRP/NALS
- Ophthalmology
- Practice Management
- Virtual Flex Sig and Colonoscope in Family Medicine Center

FOR MORE INFO, CONTACT:

Saint Joseph Regional Medical Center,
Family Medicine Residency
Martin Wieschhaus, MD, FAAFP
PO Box 1935
South Bend, IN 46634
574-237-7637 574-472-6088 fax
moenm@sjrmc.com
www.saintjosephresidency.com

Excellent salary and benefits, including a housing stipend. Call is every third to fifth night while on inpatient rotations (first and second year); every ninth night at-home call (third year). There are opportunities to moonlight during residency in the second and third years.

The Family Medicine Center, where residents see their clinic patients, has moved to an Electronic Medical Records system. Residents receive a state-of-the-art Palm Pilot when they begin employment that is theirs to keep following residency. Each of the faculty teaches OB, in addition to the experience residents obtain by working closely with dedicated OB physicians on their high-risk OB patients. There is a dedicated full-time Pharmacist who assists in the education of residents and patients in the clinic. The Family Medicine Center sees 20,000+ patient visits annually. Of those, 5,000+ pediatric clinic visits annually. It has a diverse clinic population and also includes an optional International Health Track component with Third World rotations during all three years of residency. Also available are elective options in the Sports Medicine Program as well as elective Alternative Medicine rotations that residents have arranged.

Saint Joseph Regional Medical Center is a member of Trinity Health, the third largest Catholic health system in the US. It is also the largest provider of charity health care in South Bend, as well as being the first hospital established in South Bend (1882).

Located 80 miles east of Chicago, South Bend is home to the University of Notre Dame and is in close proximity to Lake Michigan.



SAINT JOSEPH
Family Medicine
Residency Program



SAINT JOSEPH
Osteopathic Family
Medicine Residency

UNION HOSPITAL FAMILY MEDICINE RESIDENCY

Terre Haute, IN

FOR MORE INFO, CONTACT:

Union Hospital Family Medicine
Residency Program
Vicki Miller, Coordinator
1513 North 6 1/2 Street
Terre Haute, IN 47807
800-264-4717 812-238-7632 fax

Our unique certified rural training track, combined with superb facilities and faculty insure that our graduates are the best prepared physicians they can be. We prepare them to go into rural areas where most dare not to go. They go prepared to deal with 95% of all the pathology they find and 100% of all that is preventable. Whether delivering babies or comforting the terminally ill, our physicians are on equal footing.

Our state of the art EMR, advanced informatics and cutting edge hardware give our "country doctors" every advantage they will need to set the standard of care in any community they choose. With our strong emphasis on chronic disease management we are creating physicians whose patients will be the envy of those less well prepared.

WESTCHESTER GENERAL HOSPITAL

Miami, FL

FOR MORE INFO, CONTACT:

Westchester General Hospital
Harris Mones, D.O., DME
Angela Mazon,
Medical Education Coordinator
2500 S.W. 75th Avenue
Miami, FL 33155
305-263-9086 305-263-9521 fax
<http://www.westchesterhospital.com>

Westchester General Hospital is a 100-bed general acute care facility expanding to 125 beds in early 2006. The hospital is equipped with EEG, X-Ray, nuclear medicine, pharmacy, laboratory, heart station, physical therapy, CAT scan, endoscopy unit, podiatric services, state-of-the-art surgical suites and an emergency room expansion in early 2006. Additional training resources include Southern Winds Hospital, a 72-bed psychiatric hospital, West Gables Rehabilitation Hospital, Miami Children's Hospital and Westchester Health Center. In addition to the Family Medicine residency, Westchester General Hospital is approved to train third-year and fourth-year students.

POSTGRADUATE PROGRAM

Family Medicine Residency & Traditional Internships - approved for 12 postgraduate intern and residency slots.

- Annual Stipend: (includes \$1,000 per month housing allowance)
Traditional Internships: \$38,000.00
OGME2: \$40,000.00
OGME3: \$41,000.00
- Benefits: Professional liability insurance; health insurance for intern/resident - dependent and family coverage available at additional cost; dental and other insurances at additional cost; meals provided to staff on duty; lab coats; 14 days off; reimbursement for boards; CPR, ACLS; Direct Deposit; online logging system and CME.



Durant Family Medicine Clinic

Creating You Like Family!

DURANT FAMILY MEDICINE RESIDENCY IS AN UNOPPOSED PROGRAM



<p>Clinic Medical/Program Director Greg Mariens, DO</p> <p>Administrator Barbara Thomason</p> <p>3rd Year Resident Terry Gerard, DO</p>	<p>2nd Year Resident Michael Durham, DO Jamie Gore, DO Cheri Kroecker, DO Kacey Wallace, DO</p>	<p>Interns John Conley, DO Jason Forbes, DO Le Kim Lee, DO</p>	<p>Staff Angie, Shreen, Vicki, Pam, Deborah, Ananda, Justis, Kari, Darin</p>
--	--	---	---

Providing Family Health Care

580-924-5500

Fax: 580-924-1991

1600 W. University Blvd. • Durant, OK 74701

Medicaid, SoonerCare,
Commercial Insurance, Worker's
Compensation, Private Pay

UNIVERSITY OF SOUTH CAROLINA/ PALMETTO HEALTH

Columbia, SC

FOR MORE INFO, CONTACT:

University of South Carolina/Palmetto Health
Shawn Chillag, M.D.,
Program Director
803-540-1090
www.palmettohealth.org

We are proud to offer the finest training in the field of Internal Medicine, combining the intellectual challenges of an academic program and the warmth of a community hospital. The majority of the training time is spent at Palmetto Health Richland Hospital and Dorn Veterans Affairs Medical Center. This combination of a large tertiary care, level one trauma medical center with one of the busiest VA medical centers in the Southeast provides an exciting training environment as well as a diverse patient population.

PROGRAM GOALS: to help each resident:

- Graduate as an outstanding general internist; we believe that you deserve well-rounded training in the broad field of Medicine to best prepare you in your future career as subspecialist, hospitalist, or generalist
- Pass the ABIM certifying examination
- Develop skills to practice lifelong patient-centered evidence based medicine
- Develop both personally and professionally

PROGRAM BENEFITS: Payment for licenses, ACLS, USMLE step 3, ACP memberships, parking, meals when on call (total package worth approximately \$15,000 annually) Board review materials, annual book stipend (\$550) and handheld computers are also provided.

SCHEDULE

- **PGY-1:**
 - General Medicine and MICU - 7 months
 - Infectious Diseases - 1 month
 - Electives/Ambulatory - 4 months
- **PGY 2/3:**
 - General Medicine - 9 months
 - MICU - 4 months
 - Electives/ER - 10 months
 - Night Float - 1 months

UNIVERSITY OF SOUTHERN CALIFORNIA

Los Angeles, CA

FOR MORE INFO, CONTACT:

Nancy Gonzalez, M.S. Ed.
Administrator of Academic Affairs
323-226-7556 323-226-2657 fax
uscgme@usc.edu

The University of Southern California (USC) Internal Medicine Residency Training Program is situated at one of the largest and most dynamic medical centers in the country. The scope of clinical pathology seen by our residents (both common and rare) is truly unrivaled in the United States, and we provide our trainees with an excellent blend of progressive clinical autonomy and direct faculty supervision. Our residents have extensive opportunities in research and are exposed to both public and private ambulatory and inpatient settings. A new state-of-the-art, one-billion-dollar, 600-bed hospital and outpatient center will become our primary training site in 2007.

The USC Department of Medicine directs Internal Medicine training for a 3-year Categorical Program, a 4-year Medicine/Pediatrics Program and a 1-year Preliminary Medicine Program.

RON BEN-ARI, M.D.,

Program Director

THE AMERICAN HEADACHE SOCIETY

Mt. Royal, NJ

FOR MORE INFO, CONTACT:

The American Headache Society
Linda McGillicuddy, Executive Director
19 Mt. Royal, NJ 08061
856-423-0043 856-423-0082 fax
ahshq@talley.com
www.ahsnet.org



DID YOU KNOW?

Headache is the most common complaint for which people see neurologists and the seventh most common reason they visit their primary care doctors.

--Migraines and other Headaches, William B. Young, MD & Stephen D. Silberstein, MD, 2004

Founded in 1959, the American Headache Society (AHS) is a professional society of health care providers dedicated to the study and treatment of headache and face pain.

The educational objectives of AHS are to continue to improve the knowledge, skills and professional performance of physicians, psychologists and other health professionals in the care of patients with head, neck and orofacial pain.

WE'RE ESPECIALLY PROUD OF OUR RECENT ACHIEVEMENTS:

- A two-year effort by AHS and the American Academy of Neurology culminated in the recognition and accreditation by the United Council of Neurologic Subspecialties (UCNS) that headache is now a subspecialty. AHS members are leading the development process for this individual certification.
- Neurology residents at the nation's top academic medical centers are learning how to diagnose and treat headache by using our innovative, interactive Consequence-Based Learning System that shifts from "structure and process" education to outcome-based evidence. This effective teaching tool fulfills all six Accreditation Council for Graduate Medical Education core competencies.

AHS offers a complimentary one-year membership to all neurology residents at the completion of their residencies.

Learn more about the newest advances in the treatment of headache by joining The American Headache Society. Call 856.423.0043 or visit our website, www.ahsnet.org.

UNIVERSITY OF ROCHESTER MEDICAL CENTER

Rochester, New York

FOR MORE INFO, CONTACT:

University of Rochester Medical Center
Clara J. Vigelette,
Program Administrator
Department of Neurology
601 Elmwood Avenue, Box 673
Rochester, New York 14642
585-275-2545 585-244-2529 fax
clara_vigelette@urmc.rochester.edu

RAPHL F. JOZEFOWICZ, M.D.,
Program Director

The University of Rochester Neurology Residency Training Programs emphasize excellence in clinical neurology and have produced academic neurologists, practitioners of neurology, researchers, and teachers. The residency training schedule is designed for flexibility. After the first year of basic clinical neurology, every effort is made to accommodate the request of each resident for elective rotations that are chosen in concert with individualized career goals. Substantial elective time is provided in both the second and third years of training. Clinical teaching is provided by full-time academic clinical neurologists who are actively engaged in the practice of clinical neurology throughout the year. In addition, special arrangements can be made for those residents wishing to initiate research activities in their second year. The primary goals of the training program are to provide: excellent clinical training in the practice of neurology; opportunities to take part in clinical research; opportunities to develop and maintain an investigative career in the neurosciences; a sound fund of knowledge in the neurosciences upon which future educational activities can be added.

Five positions in Adult Neurology and one in Child Neurology are available each year. We hope the outstanding educational opportunities available through the Department of Neurology at the University of Rochester interest you. We invite you to submit an application.

PROGRAM STRENGTHS:

The University of Rochester is considered one of the top and one of the most attractive Neurology residency programs in the nation. The following points contribute to this reputation:

- The breadth and depth of the faculty, including many internationally recognized teacher-clinicians and clinician-researchers.
- Consistently ranking as one of the top five neurology departments in the United States for extramural research funding from the National Institutes of Health.
- The Department serves as the coordination center for several large multicenter therapeutic trials in neurology.
- The wide spectrum of neurological disorders seen, encompassing a tertiary care teaching hospital, an acute care community hospital, and a chronic care hospital.
- Superb teaching by full-time academic clinicians.
- 100% first-time resident pass rates for both parts 1 and 2 of the Neurology Board examinations for the past 5 years.
- A close-knit, friendly "family" atmosphere among faculty and residents.
- Very reasonable hospital "night call" responsibilities for residents, including a night float to cover week night call.
- Significant longitudinal and block ambulatory neurology experience in all three years of the residency, including a resident clinic, a faculty practice group, and subspecialty clinics.
- The large amount of elective time available, allowing residents to develop very individualized educational programs.
- A fully integrated PGY-1 year in the Strong Memorial Hospital Internal Medicine Program, with a longitudinal outpatient experience in the neurology resident clinic.
- The presence of Internal Medicine interns on the inpatient Neurology Service at Strong Memorial Hospital to lessen routine patient care burdens.
- The affordable and high-quality lifestyle provided by the City of Rochester and surrounding suburbs.

LEHIGH VALLEY HOSPITAL

Allentown, PA

FOR MORE INFO, CONTACT:

Lehigh Valley Hospital
 Teresa Benner
 Residency Program Coordinator
 PO Box 7017
 Allentown, PA 18105-7017
 610-969-4515 610-969-3088 fax
 teresa.benner@lvh.com
 www.LVHHN.org

PATRICE M. WEISS, M.D., F.A.C.O.G.



Program Director

The Department of Obstetrics and Gynecology at Lehigh Valley Hospital proudly offers our residents unparalleled education and experience in this rewarding field of medicine. From state-of-the-art equipment to subspecialty rotations, including Oncology, Urogynecology, Maternal-Fetal-Medicine, and Reproductive Endocrinology and Infertility, as well as Geriatrics, Ambulatory Medicine, and Primary Care, our residents receive the best medical education that can be offered. While Lehigh Valley Hospital offers the subspecialty rotations listed, it is important to note that there are no fellows at our institution, which further ensures our residents receive full exposure to all surgical and educational opportunities.

Our faculty consists of 30 generalists and two boarded RE&I physicians, three Gynecologic Oncologists, and one Urogynecologist. We are in the process of implementing our MFM Initiative and currently have six MFM physicians, and are expanding to eight to provide 24-hour/seven-days per week coverage of the labor and delivery unit by an MFM physician.

Additionally, Lehigh Valley Hospital allows residents 24 hour access to modern library facilities, which include individual work stations and on-line subscriptions to Medline/Ovid, MD Consult, and Up-to-Date. The hospital intranet provides a link to all titles, journals, etc., housed at the hospital libraries, and the library is part of a consortium which allows for access of any materials not readily available.

Located in beautiful Northeastern Pennsylvania, Lehigh Valley Hospital and the Department of Obstetrics and Gynecology are fully committed and dedicated to making the program offered here the best OB/GYN Residency in the country.

For a copy of our residency video or for further information, please contact: Teresa Benner, Residency Program Coordinator, PO Box 7017, Allentown, PA 18105-7017. Phone: 610 969-4515 Fax: 610 969-3088 Email: teresa.benner@lvh.com, or visit our website at LVHHN.org.

ROTATION SCHEDULE

PGY1

- Gynecology
- Obstetrics
- MFM
- RE & I
- Night Float
- Emergency Department

PGY2

- Gynecology
- Obstetrics
- Oncology
- Night Float
- RE&I
- MFM
- ICU

PGY3

- Gynecology
- Obstetrics
- Oncology
- Night Float
- Urogynecology

PGY4

- Gynecology
- Obstetrics
- Oncology
- Ambulatory Medicine
- Night Float
- Geriatrics

RIVERSIDE METHODIST HOSPITAL

Columbus, Ohio

FOR MORE INFO, CONTACT:

Riverside Methodist Hospital
 Jennifer Freeland,
 OB/GYN Residency Program Administrator
 3535 Olentangy River Rd.
 Columbus, Ohio 43214-6852
 614-566-5762 614-566-6852 fax

For more than three decades Riverside Methodist Hospital in Columbus, Ohio has trained quality obstetricians and gynecologists in our nationally accredited residency program. The tradition of graduating compassionate, competent obstetricians/gynecologists is a source of pride and a hallmark of this institution's commitment to graduate medical education.

Riverside has about 7,000 deliveries a year, which provides a tremendous number of excellent educational opportunities. The surgical numbers for residents are usually in the 80-98th percentile, compared nationally. In addition to general obstetrics and gynecology, the program includes MFM, REI, GYN/ONC, Urogynecology, Menopausal Medicine and General Surgery rotations. Residents also have the opportunity to teach area medical students that rotate through the program monthly.

Another program highlight is the new Center of Medical Education and Innovation. This Center is an initiative of Riverside's Graduate Medical Education Committee that will change the way medical professionals are trained by enhancing the learning of patient care from beyond the patient bedside to include a high-tech simulated learning environment. The Center represents a major transformation in medical education and will increase patient safety, facilitate the evaluation of new medical technologies, and encourage the adoption of new skills.

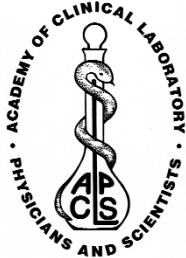
Riverside Methodist Hospital, Medical Education Department, 3535 Olentangy River Rd., Columbus, Ohio, 43214. Info hotline: 614 566-4463 www.ohiohealth.com

ACADEMY OF CLINICAL LABORATORY PHYSICIANS AND SCIENTISTS (ACLPS)

Salt Lake City, UT

FOR MORE INFO, CONTACT:

ACLPS
 Elizabeth L. Frank, Ph.D.,
 Secretary-Treasurer
 500 Chipeta Way
 Salt Lake City, UT 84108
 800-242-2787 ext. 2087
 801-584-5207 fax
 e.frank@aruplab.com
 www.aclps.org



The purpose of ACLPS is to advance education in the field of laboratory medicine. Laboratory medicine, also termed 'clinical pathology,' is a field of medical science that encompasses all laboratory disciplines applied to health care, education and research. Individuals may become board certified in clinical pathology and practice as generalists or they may complete a subspecialty fellowship, have a focused clinical practice, and pursue their research interests.

The members of the Academy of Clinical Laboratory Physicians and Scientists firmly believe that the role of laboratory medicine will continue to grow in importance. It is a field in which professional competence, dedication, and scholarship are required. The promise and importance of this field in the realm of medical education are so great that the best abilities and talents must be attracted to it in order that its potential may be fully realized.

THE OBJECTIVES OF THE ACADEMY ARE:

- To encourage and advance the highest standards of education in laboratory medicine in medical school and related curricula.
- To encourage and promote the highest standards of resident training and post-graduate education of physicians and scientists in clinical pathology at universities and medical schools.
- To encourage and promote the highest standards of service, education and research in academic laboratory medicine.

Our website, www.aclps.org, provides additional information about clinical pathology as a specialty and contact information for current officers of ACLPS.

5 KEY FACTS:

- Laboratory medicine (clinical pathology) encompasses all laboratory disciplines applied to health care, education, and research.
- Laboratory medicine continues to grow in importance.
- ACLPS is an organization of

academic laboratory medicine professionals committed to laboratory medicine education and practice.

- Board certification in clinical pathology and various subspecialty certifications are available.
- Subspecialties include Clinical Chemistry, Coagulation,

Cytogenetics, Hematology, Hematopathology, Immunology, Laboratory Management, Medical Informatics, Microbiology, Molecular Diagnostics, Mycology, Toxicology, Transfusion Medicine, and Virology.

BERKSHIRE MEDICAL CENTER

Pittsfield, MA

FOR MORE INFO, CONTACT:

Berkshire Medical Center
 Rebecca Johnson, MD,
 Program Director
 725 North Street
 Pittsfield, MA 01201
 413-447-2133
 drathbun@bhs1.org

The goal of the pathology residency training program is to train competent practicing pathologists in anatomic and clinical pathology.

Our objective is to provide a comprehensive educational experience that will allow the resident, at the end of four years, to acquire further training in a competitive and desirable fellowship and/or obtain a position in an academic, hospital, or commercial laboratory setting and perform competently.

The scientific basis of medicine is stressed throughout training, with a solid experience in molecular pathology. The role of the pathologist as consultant, pivotal member of the healthcare team, informatician, manager, and administrator is emphasized.

The Pathology Residency Program is a Accreditation Council of Graduate Medical Education (ACGME) approved, four-year training program which leads to Board qualification in Anatomic Pathology and/or Clinical Pathology. We provide thorough, practical experience, education and management in each field under the guidance of a specialized pathologist in each section. There are also Medical Technology and Cytotechnology training programs with opportunities for resident participation and teaching.

OREGON HEALTH & SCIENCE UNIVERSITY

Portland, OR

FOR MORE INFO, CONTACT:

Oregon Health & Science University
Alexis Jagers, Program Coordinator
3181 SW Sam Jackson Park Rd.
Portland, OR 97239-3098
503-494-4110 503-494-2025 fax
jagersa@ohsu.edu

The Oregon Health & Science University Department of Pathology offers a fully accredited four year training program in clinical and anatomic pathology. The anatomic pathology program includes autopsy pathology, surgical pathology, and cytopathology. Subspecialty areas include cytopathology, electron microscopy, forensic pathology, immunohistochemistry, neuropathology, including nerve and muscle biopsies, hematopathology, and renal pathology. The clinical pathology training includes laboratory experience in blood banking, chemistry, hematology, toxicology, cytogenetics, molecular genetic pathology, and immunology. An AP & LM In-Service course of more than 100 instructional hours covers the breadth of the specialty. This course is given over two years, so residents experience two cycles prior to board examinations. Residents participate in many conferences in addition to assisting in teaching medical students and medical technology students. Approximately seven (7) months of electives are offered during the four year training program. Electives include advanced training in virtually all service and research laboratories, as well as laboratory management and informatics.

Training is provided by the Department of Pathology at Oregon Health & Science University (OHSU), the Portland Veterans Affairs Medical Center (VAMC), Kaiser Permanente NW and the Oregon Medical Examiner's Office. These medical centers have a combined bed capacity of more than 1,400. The anatomic laboratories process approximately 75,000 surgicals, 80,000 cytologies and in excess of 220 autopsies a year. The medical examiner performs about 1,000 examinations and 700 autopsies per year and has complete facilities and support personnel for all routine and special procedures including forensic toxicology.

The 116-acre campus of the Oregon Health & Science University overlooks the City of Portland and is 1.5 miles from the central business district. The Portland V.A. Medical Center is connected by a pedestrian footbridge, and is closely affiliated with the University. The Portland Metropolitan area has a population of more than 2 million and is one of the business and cultural centers of the Pacific Northwest. Portland borders the Willamette and Columbia Rivers. On the horizon to the east is the Cascade Mountain Range and to the west the Coast Range. Opportunities for winter sports, hunting, fishing, hiking, boating, skiing and beachcombing are all within a short distance.

Three first-year positions are generally available for the four-year AP & LM training program, and applications are accepted only through ERAS. The application deadline is November 15 for appointments starting in July of the following year. For additional information, refer to our web page: www.ohsu.edu/pathology.

UNIVERSITY OF UTAH

Salt Lake City, UT

FOR MORE INFO, CONTACT:

University of Utah Medical Center
Evelyn Gopez, MD, Program Director
Department of Pathology
30 North 1900 East
Salt Lake City, UT 84132-2501
801-585-5609 801-585-2749 fax
evelyn.gopez@hsc.utah.edu

The pathology department offers approved postgraduate training programs in both anatomic and clinical pathology leading to board certification. The residency mission is to train exceptional board certified pathologists through flexible programs individually tailored for subsequent careers ranging from combined AP/CP community pathology service to specialized, academic research. The program uses an annually revised core curriculum emphasizing interdisciplinary education, and equal excellence in anatomic and clinical pathology. It incorporates graduated levels of responsibility and authority in the traditional service realm with training in molecular biology, medical informatics, quality assurance, and business and hospital management. With a faculty of over 90 committed academic and clinical practitioners at multiple facilities, including university, children's and Veterans Affairs hospitals, three major community hospitals, the state medical examiner, and a national reference library, the residency provides exposure to and experience in a full complement of autopsy, surgical and clinical pathology cases and medical problems, as well as eminent basic science and clinical research. A complete program description can be found at <http://www.path.utah.edu>

ST. JOSEPH'S HOSPITAL & CHILDREN'S HEALTH CENTER

Phoenix, AZ

FOR MORE INFO, CONTACT:

St. Joseph's Hosp. & Children's Health Ctr.
Jan Gaffney,
Program Coordinator
350 West Thomas Road
Phoenix, AZ 85013
602-406-3122 602-406-4102 fax
jan.gaffney@chw.edu
www.ichosestjoes.com

LILIA PARRA-ROIDE, M.D.,

Program Director



St. Joseph's Hospital and Medical Center is a tertiary care teaching hospital located in beautiful Phoenix Arizona. The Children's Health Center (CHC) provides high quality inpatient and outpatient hospital and community-based health care for children in Arizona.

In addition, the CHC develops and provides innovative research programs that compliment other community pediatric services while educating 30 pediatric residents per year (10 per class), along with third and fourth year medical students. The pediatric department consists of 32 employed faculty and 32 contracted faculty including all major subspecialties. The philosophy of the department is to foster a professional family to provide excellent pediatric education.

The Children's Health Center offers comprehensive pediatric care. Our outpatient services use our Pediatric Ambulatory Care Center (PACC) to provide over 10,000 outpatient visits per year to underprivileged children in Phoenix with an additional 40,000 outpatient visits to the Children's Rehabilitative Services (CRS) clinic, including more than 12,000 pediatric visits annually in the Emergency Room department. Our inpatient services comprise a 66-bed pediatric ward with over 3,500 admissions per year, along with a 50-bed Nursery Intensive Care Unit (NyICU), and a 24-bed Pediatric Intensive Care Unit (PICU).

We hope you take the time to seriously consider our program and look forward to the prospect of having you join our pediatric care family. For further information visit www.ichosestjoes.com.

ROTATION SCHEDULE

PL-1

- 1 month NyICU
- 2 month Elective
- 1 month Developmental/Behavioral Pediatrics
- 1 month ER
- 2 month Outpatient Pediatrics
- 5 month Inpatient Ward

PL-2

- 1 month Elective
- 1 month Pediatric ER
- 1 month Child-abuse Evaluation

- and Outpatient Surgery
- 1 month Adolescent Medicine
 - 3 month Inpatient Ward
 - 2 month Outpatient Pediatrics
 - 2 month PICU
 - 1 month NyICU

PL-3

- 1 month Pediatric ER
- 1 month PICU
- 1 month NyICU
- 1 month Community Pediatrics
- 3 month Inpatient Ward

- 2 month Outpatient Pediatrics
- 3 month Electives

ELECTIVES

- Allergy/Immunology*
- Cardiology*
- Endocrinology*
- Gastroenterology*
- Genetics*
- Hematology/Oncology*
- Infectious Diseases*
- Nephrology*
- Neurology*

- Orthopaedics/Sports Med.
- Outpatient Pediatrics
- Pulmonology*
- Radiology
- Surgical Specialties
- Private Practice/Practice Management
- Children's Rehabilitative Services

* Per RRC Guidelines, 4 out of 6 elective choices must come from the list above.

UNIVERSITY OF OKLAHOMA

Oklahoma City, OK

FOR MORE INFO, CONTACT:

University of Oklahoma (Pediatrics)
Shirley Rooms, Program Coordinator
405-271-4417 405-271-2920 fax
940 NE 13th St, Suite 3409B
Oklahoma City, OK 73104
shirley-rooms@ouhsc.edu
<http://pediatrics.ouhsc.edu/residency.asp>

JOAN CAIN, M.D.,

Program Director

The Pediatrics Residency Program at the University of Oklahoma prides itself on developing residents into confident, caring, independent thinkers. We accept 13 residents per year and provide them the opportunity to develop into physicians in a family-friendly, non-hierarchical, resident-centered environment. We serve the entire state of Oklahoma as the major children's hospital and subspecialty resource which exposes our residents to a variety of both rare and common pediatric illnesses. Our hospital is home to all major pediatric subspecialties, including genetics, rheumatology, endocrinology, infectious disease, neurology, surgery, and many others. In 2006, we will move into a new building, to bring women's and children's services together, and build a brand new state-of-the-art 8-story pediatric ambulatory care center that will serve general pediatrics, subspecialty care and pediatric surgical services. We consider resident education a priority, with protected teaching time, daily teaching rounds on all services, an impressive educational website, and a ward educator rotation where the resident becomes the teacher for interns and students. Oklahoma City offers a low-cost living environment surrounded by outdoor activities, sports, arts and entertainment, and a variety of ethnic and cultural activities. Please call or email for more information about what we have to offer here in Oklahoma City. We look forward to hearing from you!

DETROIT MEDICAL CENTER/WAYNE STATE UNIVERSITY

Detroit, MI

FOR MORE INFO, CONTACT:

Rehabilitation Institute of Michigan
Colleen Sturr,
PM&R Residency Coordinator
261 Mack Ave., Suite 509
Detroit, MI 48201
313-745-9880 313-745-1197 fax
ccciavare@dmc.org
www.rimrehab.org

JAY MEYTHALER, M.D., J.D.,



Chair,
Department
of PM&R

The Detroit Medical Center is one of the largest academic medical centers in the US, comprised of ten hospitals, six of which are located on a 110-acre campus located adjacent to Wayne State University (WSU); one hospital is a level-one trauma center (Detroit Receiving Hospital). Together with WSU, the DMC strives to be the regions premier health care resource through a broad range of clinical services, the discovery and application of new knowledge and the education of practitioners.

The DMC's Rehabilitation Institute of Michigan (RIM) is one of the nations largest academic rehabilitation hospitals. RIM is a 94-bed JCAHO and CARF accredited specialty hospital dedicated to the rehab care of patients who have injuries or disorders that include TBI, spinal cord injury, stroke, amputation, orthopedics and musculoskeletal degenerative or occupational disorders. The Institute has also earned the distinction of being one of only sixteen federally designated model systems of care for TBI.

The WSU/DMC Residency Training Program in Physical Medicine and Rehabilitation is nationally recognized for its excellence in clinical care, education and research opportunities unavailable in a non-university setting. RIM together with Sinai-Grace Hospital (one of the ten DMC hospitals) and suburban outpatient centers provide primary training. The integration of these programs offers residents some of the most extensive outpatient musculoskeletal and electrodiagnostic experiences available in a PM&R Residency.

ROTATION SCHEDULE

YEAR 1

- Stroke & Geriatric (Inpatient Unit) - 2 months
- General Rehabilitation (Inpatient Unit) - 2 months
- EMG I (Outpatient Rotation) - 2 months
- Inpatient Consults - 2 months
- Orthopedic & Amputee (Inpatient Unit) - 2 months
- Spinal Cord Injury (Inpatient) - 2 months

YEAR 2

- Traumatic Brain Injury (Inpatient Unit) - 3 months
- Pediatrics (Inpatient & Outpatient) - 2 months
- Inpatient Consults - 2 months
- Spinal Cord Injury (Inpatient Unit) - 1 month
- Outpatient Rotation - 2 months
- Outpatient Selective - 1 month
- Physical Therapy/Occupational Therapy/ Cardiac Rehabilitation - 1 month

YEAR 3

- EMG II (Outpatient Rotation) - 2 months
- Float Rotation (Includes: Outpatient Consults, EMG, Injections & Pain Management) - 4 months
- Elective Rotations - 4 months
- Advanced Outpatient Rotation - 2 months

JOHNS HOPKINS BLOOMBERG SCHOOL OF PUBLIC HEALTH

Baltimore, MD

FOR MORE INFO, CONTACT:

Johns Hopkins Bloomberg School of Public Health
Linda R. Myers, Administrator
615 N. Wolfe Street, Room WB602
Baltimore, MD 21205
410-955-3362 410-614-1582 fax
lmyers@jhsph.edu
www.jhsph.edu/gpmr

The General Preventive Medicine Residency Program of the Johns Hopkins Bloomberg School of Public Health has graduated nearly 500 preventive medicine physicians. Our mission is to prepare physicians in the theoretical, practical, and clinical knowledge and skills essential to leadership roles in the design, management, and evaluation of population-based health.

The first year of the two-year program provides residents strong didactic training in the School's MPH program, covering the core areas of public health, health promotion and disease prevention, and population-based medicine and research, augmenting the core curriculum with elective courses to meet their professional needs. The MPH program is enhanced by residency seminars that provide leadership and management training. Residents participate in teaching an undergraduate public health course and undertake a management project evaluating a department or program in the Johns Hopkins Medical Institutions. Second year residents rotate at health agencies and other settings where preventive medicine is practiced.

Residents benefit from the wealth of talent among the school's faculty and the rich variety of seminars, classes, and research projects. The program is enhanced by its proximity to Washington, D.C. and the federal health agencies and private consulting firms located in the region. We utilize all of these opportunities to provide residents with the knowledge, skills, and tools to become leaders in the field of preventive medicine.

BANNER GOOD SAMARITAN MEDICAL CENTER

Phoenix, AZ

FACTS AT A GLANCE

- Largest acute care facility in Arizona
- Major teaching affiliate for the University of Arizona College of Medicine's Phoenix Campus
- Number of Residents: 16
- Diverse patient population

ROTATION SCHEDULE

PGY-1

- Internal Medicine
- Emergency Medicine
- Neurology
- Adult Inpatient Psychiatry

PGY-2

- Adult Inpatient Psychiatry
- Chemical Dependency
- Child and Family Psychiatry
- Consultation-Liaison Psychiatry
- Brain Imaging
- Outpatient Psychiatry (continuous part-time)

PGY-3

- Community Psychiatry
- Consultation-Liaison Psychiatry
- Adolescent Psychiatry
- VAMC Outpatient Psychiatry
- Geriatric Psychiatry
- Forensic Psychiatry
- Outpatient Psychiatry (continuous part-time)

PGY-4

- Senior Resident Positions
- Outpatient Psychiatry
- Forensic Psychiatry
- Employee Assistance Program
- Elective experiences - PET Center, cross-cultural psychiatry, forensics, research, geriatrics, sleep disorders, student health and others



JAMES B. MCLOONE, M.D.,
Director of Residency Training

Over the past four decades, the Psychiatry Residency at Good Samaritan Medical Center has provided a broadly based training program allowing our residents to acquire the most contemporary clinical skills and a solid foundation of knowledge for lifelong professional development. Our educational philosophy genuinely considers an eclectic and integrated biopsychosocial model the cornerstone of understanding and treating patients.

Good Samaritan is an academically oriented clinical setting with over 250 residents and fellows in all the major specialties and an enthusiastic and experienced hospital-based faculty. The manageable size of our Psychiatry Residency fosters a genuine spirit of cooperation and participation between residents and attendings to ensure the best opportunities for learning during the most important stage of your professional development.

The Medical Center's 60 acre campus includes a modern 12-story inpatient complex and state-of-the-art diagnostic, emergency and support services. The clinical Psychiatry programs at Good Samaritan include a 22 bed adult inpatient unit and an attractive outpatient clinic. Our active consultation-liaison and emergency psychiatric services allow routine interaction with nonpsychiatric colleagues throughout the Medical Center.

Our residents are exposed to an excellent mixture of public and privately insured patients with diverse economic and sociocultural backgrounds and every type of Psychiatric illness, level of acuity and age. Our Psychiatry Residency Program also offers required and elective experiences at other well-supervised nearby clinical sites including the Veteran's Administration Medical Center, Phoenix Children's Hospital, a community mental health clinic, forensic settings, Arizona State University, Scottsdale Behavioral Health Center and outreach to rural areas.

These excellent clinical rotations are complemented by daily organized lectures, seminars and conferences that are intellectually stimulating and address the rapidly expanding body of information in modern Psychiatry. A "core curriculum" of biobehavioral sciences is provided in a progressive fashion through all years of training and includes in-depth study of neurosciences, mental health and psy-

FOR MORE INFO, CONTACT:

Banner Good Samaritan Medical Center
Jo Russo, Assistant Residency Coordinator
925 E. McDowell Road, 4th Floor
Phoenix, AZ 85006
602-239-6880 602-239-6988 fax
Jo.Russo@bannerhealth.com
www.bannerhealth.com

chopathology as well as theoretical and practical aspects of the contemporary psychotherapies, social rehabilitation and advanced pharmacologic and somatic interventions. Supervision remains a key component of our Psychiatry Residency Program and includes several hours of individual and group experiences each week.

Good Samaritan Medical Center is a major teaching affiliate of the University of Arizona College of Medicine and our residents routinely interact with third and fourth year medical students assigned to the Phoenix Campus. Also, our PET Center and the Brain Imaging and Behavioral Sciences Program provide opportunities for our residents to collaborate in clinical and neuroscientific research.

Phoenix is the urban center of the nation's sixth largest metropolitan area. The Valley of the Sun epitomizes the integration of progressive development, modern architecture and beautiful scenery with the traditions and character of the Southwest. Housing remains affordable and there are recreational and cultural activities for every taste.

Interested applicants are encouraged to visit our website at www.bannerhealth.com and to call (602-239-6880) or request by e-mail a more detailed packet of information. We participate in ERAS and the Match. Of course, a visit with us to tour our facilities, meet our residents and faculty and see the area is the best way to appreciate the excellent opportunities available at Good Samaritan.

THE INSTITUTE OF LIVING/HARTFORD HOSPITAL

Hartford, CT

FOR MORE INFO, CONTACT:

*Institute of Living/Hartford Hospital
Sandy Tolisano, Residency Coordinator
200 Retreat Avenue
Hartford, CT 06106
860-545-7183
stolisa@harthosp.org*

ADRIENNE BENTMAN, M.D.,



Director of Residency Training

ABOUT THE PROGRAM

The 180-year-old Institute of Living is a psychiatric landmark and one of the country's leading mental health centers. The third mental health facility established in the U.S., it is today part of a nationally recognized medical complex anchored by Hartford Hospital, the largest hospital in Connecticut. The Institute is home to the Olin Neuropsychiatry Research Center, a state-of-the-art facility conducting leading-edge research in schizophrenia and related severe psychiatric disorders. The Institute has a proud tradition of psychiatric education dating back to the mid-20th century, and our faculty and graduates are accomplished and respected figures in the profession.

PHILOSOPHY OF TRAINING

Our goal is to educate residents in the full array of mental health therapies through a curriculum that recognizes the dynamic connection between psychotherapy and neuropsychiatry. Residents gain knowledge and experience in providing a full spectrum of services to patients of all ages and backgrounds and with a broad array of disorders. Participants learn from nationally prominent professionals in a community committed to incorporating into diagnosis and treatment the familial, social, spiritual and cultural factors that are part of each person's mental and emotional experience.

ROTATION SCHEDULE

PGY-1

- 4 months primary care medicine (internal medicine/pediatrics)
- 3 months inpatient psychiatry
- 2 months each neurology and inpatient psychiatry (biopsychosocial concentration)
- 1 month addictions

PGY-2

- 4 months inpatient psychiatry
- 2 months each child and adolescent, geriatric, and consultation/liaison psychiatry
- 1 month each emergency psychiatry/crisis intervention and inpatient psychiatry (teaching and supervisory concentration)
- 12 months outpatient psychiatry (10%)

PGY-3

- 12 months outpatient psychiatry including community & forensic psychiatry experiences

PGY-4

- 4 months service chief (90%) and outpatient psychiatry (10%)
- 8 months electives/research (90%) and outpatient psychiatry (10%)

UPSTATE MEDICAL UNIVERSITY

Syracuse, NY

FOR MORE INFO, CONTACT:

*SUNY Upstate Medical University
John Manning, MD Program Director
Noreen Lannon, Residency Coordinator
750 E Adams St.
Syracuse, NY 13210
315-464-3106
315-464-3163 fax
Lannonn@upstate.edu*

JOHN MANNING, M.D.,



Program Director

We are pluralistic in our approach to psychiatry, offering superior learning experiences in both the biological and psychological approaches, believing that often these treatments need to be integrated for the best patient care. A unique feature of our residency program is the rich availability of classes and seminars. While you will experience patient care at every residency program, few offer as many opportunities to study directly with faculty. In addition we have a richly developed research program which has led to one of the highest rates of resident publications in the country.

We have also launched an innovative new program which fully integrates a Masters in Public Administration degree (MPA) into our standard four year residency in Psychiatry. In this optional program you will be dually enrolled at Syracuse University's Maxwell School of Citizenship and Public Affairs which has consistently been rated as the best graduate school in the country for public administration.

... And, we trace our roots to the graduation of the nation's first woman physician, Elizabeth Blackwell, M.D. in 1849!

Experience the very special warmth and excitement offered by our residency program here at the crossroads of Central New York - Syracuse!

ROTATION SCHEDULE

PGY-1

- 5 months: Inpatient Psychiatry
- 3 months: Internal Medicine
- 2 months: Neurology
- 1 month: Emergency Medicine
- 1 month: Emergency Psychiatry

PGY-2

- 6 months: Inpatient Psychiatry
- 2 months: Substance Abuse
- 2 months: Consultation Liaison Psychiatry
- 2 months: Triage Psychiatry

PGY-3

- 12 months (P/T): Outpatient Clinic
- 12 months (P/T): Child Psychiatry
- 12 months (P/T): Electives

PGY-4

- 12 months (P/T): Outpatient Clinic
- 12 months (P/T): Electives
- 2 months: Geriatrics
- 1 months: Forensics

THE AMERICAN ASSOCIATION FOR THE SURGERY OF TRAUMA

Pittsburgh, PA

FOR MORE INFO, CONTACT:

Andrew B. Peitzman, M.D.
 AAST, Secretary-Treasurer
 Department of Surgery
 F-1281 Presbyterian Hospital
 200 Lothrop Street
 Pittsburgh, PA 15213
 412-647-4848 412-647-1194 fax



The purpose of the American Association for the Surgery of Trauma is to furnish leadership and to foster advances in the care of the injured and acutely ill surgical patients. This organization is in a leadership position as the new specialty of Acute Care Surgery (encompassing trauma, emergency surgery, and critical care) evolves. The American Association for the Surgery of Trauma affords a forum for surgeons of multiple disciplines to exchange knowledge pertaining to research, practice and training in acute care and trauma surgery, investigate and teach methods of prevention and management of injuries of all types, establish lectureships, scholarships, and foundations to stimulate research and learning, and afford recognition to those who have contributed to the surgery of trauma by extending to them membership in the Association.

For more information on AAST Membership and Meetings, please contact Andrew B. Peitzman, M.D.

BAYSTATE MEDICAL CENTER

Springfield, MA

FOR MORE INFO, CONTACT:

Baystate Med. Ctr. Dept. of Surgery
 Richard B. Wait, MD, Program Director
 759 Chestnut Street
 Springfield, MA 01199
 413-794-5165 413-794-1835 fax
 annette.cummings@bhs.org
 www.baystatehealth.com/education

RICHARD B. WAIT, M.D.,



Program Director

Baystate Medical Center's Department of Surgery is proud to be at the forefront of surgical residency education in the United States. With over 40 years of experience, members of our faculty frequently provide leadership on national accreditation, policy, and review boards. The faculty is comprised of more than 50 Board Certified or Board Eligible surgeons, representing literally every subspecialty. Our role in charting the future course of surgical education is as important as our long tradition of academic excellence.

Our program services a unique niche in graduate surgical education. We offer a high volume of cases as well as elective bench and clinical research. Many of our residents have continued their specialty surgical education in recognized fellowships at Mount Sinai and Yale.

The surgical skills lab at BMC employs a variety of simulators to teach residents basic and advanced surgical skills. Individual progress is monitored during both mentored and self-directed training sessions using computer-enhanced and virtual reality training devices. These resources facilitate the acquisition of selected skills prior to their actual clinical application, and greatly enhance the learning experience in the O.R.. A state-of-the-art Human Patient Simulator is used to present a diverse range of clinical scenarios to trainees in the form of interactive simulations that emphasize team training and crisis management. BMC is one of the few training programs in the country to offer residents such rich educational opportunities in a skills lab setting.

In addition to a bi-monthly house staff business meeting our residents participate in a *Resident Leadership Group* meeting every month. This group consists of the four chief residents and representatives of each training level elected by their peers (PGY1-4). Residents use this unrestricted forum to discuss educational and service issues of concern to them and thus direct important issues of their academic and clinical training. We acknowledge the importance of lifestyle during this busy time in your life.

Please visit our website www.baystatehealth.com/surgresidency for more information. We invite you to consider joining our team.

ROTATION SCHEDULE

PGY1

- 2 months general surgery
- 2 months vascular surgery
- 2 months trauma
- 2 months ICU
- 1 month pediatric surgery
- 1 month transplant
- 1 month thoracic/minimally invasive surgery

PGY2

- 3.5 months general surgery
- 2 months vascular surgery

- 1 month ICU
- 1 month transplant
- 2 months pediatric surgery
- .5 month cardiac surgery
- 1 month thoracic/minimally invasive surgery

PGY3

- 10 months general surgery
- 6 weeks vascular surgery
- 6 weeks trauma
- 6 weeks ICU
- 12 weeks plastic surgery

- 6 weeks transplant
- 4 weeks endoscopy

PGY4

- 28 weeks general surgery
- 7 weeks trauma
- 10 weeks thoracic/minimally invasive surgery
- 3 weeks endoscopy

PGY5

- 9 months general surgery
- 3 months vascular surgery

ST. ELIZABETH'S MEDICAL CENTER

Brighton, MA

FOR MORE INFO, CONTACT:

*Caritas St. Elizabeth's Medical Center
Vincenza Gelardi,
Surgical Education Manager
Surgical Education Office CMP 2
736 Cambridge Street
Brighton, MA 02135
617-789-2990 617-789-3419 fax
Vincenza.Gelardi@CaritasChristi.org*

The Surgical Residency Program at St. Elizabeth's Medical Center in Boston offers a fully accredited, five-year training program in general surgery. Established in 1948, the program has a proud tradition of training surgeons for both community practice and academia. The program has 20 residents and graduates three Chiefs, over two thirds of whom enter fellowships in various surgical specialties. The program's relatively small size permits close interaction between teaching staff and residents in a congenial atmosphere. More operative experience is provided than in most other programs in the United States; during five years of training, a resident can expect to perform approximately 1,100 procedures as surgeon and gain in-depth experience with common surgical illnesses as well as rare and unusual cases. Many of the program faculty members are regional or national experts in these areas. The educational curriculum has recently been completely revamped to provide basic skills training and exposure to the new ACGME mandated competencies.

We believe that teaching is an essential part of residency training, all general surgery residents have the opportunity to serve as clinical instructors to third-year medical students from Tufts University and the University of Massachusetts during core clerkships and to fourth-year medical students doing subinternships from Tufts University.

ST. JOSEPH MERCY-OAKLAND

Pontiac, MI

FOR MORE INFO, CONTACT:

*St. Joseph Mercy-Oakland
Debra K. Reid, GME Specialist
44405 Woodward Ave.
Pontiac, MI 48341
248-858-3234 248-858-3244 fax
reidd@trinity-health.org
www.stjoesoakland.com*

Located in prestigious Oakland County, St. Joseph Mercy-Oakland possesses a strong, community-based surgical residency program with a rich tradition. The close proximity to some of Metro Detroit's finest suburbs offers a very diverse patient population. Two categorical and four preliminary residents are annually given the opportunity to develop their skills in this 400-bed, state-of-the-art facility. A graduate will take part in over 1000 cases, including all ACGME defined category requirements and will graduate as chief resident. Having no competition with fellows, all general surgery and most subspecialty cases are covered by the residency. Residents take in-house call approximately every fourth night for the first four years and home call as chief resident. All rotations are at the primary institution except for a month each of Burn at the Detroit Medical Center and Transplant at St. John Hospital in Detroit. Graduates have gone on to both private practice and a wide variety of fellowships with strong scores on their Board examinations. Competitive salary and benefits are offered as well as an educational stipend. The program strictly adheres to all work hour mandates. The institution maintains clinical affiliations with Wayne State University and St. George's University School of Medicine.



OUR MISSION
Michigan State University Kalamazoo Center for Medical Studies is a university and community partnership driven by a team of dedicated professionals committed to provide excellence in graduate, undergraduate and continuing medical education, knowledgeable and caring service, and research.

OUR VISION
Michigan State University Kalamazoo Center for Medical Studies will excel in providing quality medical education. We will deliver expert, responsive patient care and pursue innovative research.

OUR VALUES
Compassionate Service
Leadership
Lifelong Learning
Teamwork
Commitment to Excellence

MICHIGAN STATE UNIVERSITY • KALAMAZOO CENTER FOR MEDICAL STUDIES

At MSU/KCMS, we realize that being an exceptional physician means having a balance between the personal and professional areas of your life. Our mission is to help you achieve your clinical and academic goals in a truly supportive environment. More than 150 residents take part in our residency programs and have exposure to the broadest range of health care. Our partnership with award-winning Level One Trauma Centers means that from newborns to the elderly, you will have patient diversity that will allow for you to develop your skills to their fullest.

At MSU/KCMS, you will have opportunities to participate in a variety of research projects. We are proud of our numerous awards and grants and our faculty that understands the correlation between great research and great patient care.

At MSU/KCMS, with quality of education comes quality of life. Almost half our residents own their own homes in a region that has been ranked as one of the best places in America to live... good schools, low cost of living, clean air and an abundance of recreation means your hours outside of MSU/KCMS will be as fulfilling as those inside.

Come see what we have to offer.
Visit us at www.kcms.msu.edu or call (800) ASK-KCMS.

MSU/KCMS offers fully accredited programs in Internal Medicine · Pediatrics · General Surgery · Family Medicine · Psychiatry · Orthopaedic Surgery · Medicine/ Pediatrics · Emergency Medicine · Sports Medicine Fellowship · Transitional Year

MSU/KCMS also offers two Osteopathic Internship programs for Family Medicine and Internal Medicine.

YALE-NEW HAVEN MEDICAL CENTER

New Haven, CT

FACTS AT A GLANCE

- Broad range of surgical experience at 3 integrated hospitals
- 80 hour week, 1 in 7 off, mostly q4 call
- Dynamic new chairman and growing department
- Five categorical residents per year
- Academic program offering research opportunities

ROTATION SCHEDULE

12 ROTATIONS

- 4 General Surgery
- 1 Intensive Care Unit
- 1 Burn Unit
- 1 Vascular
- 1 Transplant
- 1 Pediatric Surgery
- 1 Plastic Surgery
- 1 Urology
- 1 ENT

12 ROTATIONS

- 5 General Surgery
- 2 Trauma Surgery
- 1 Transplant
- 1 Cardiothoracic
- 2 Intensive Care Unit
- 1 Vascular

7 ROTATIONS

- 3 General Surgery
- 2 Trauma Surgery
- 1 Vascular
- 1 Pediatric Surgery

5 ROTATIONS

- 2 General Surgery
- 2 Trauma Surgery
- 1 Transplant

5 ROTATIONS

- 5 General Surgery



WALTER LONGO, M.D.,

Program Director

The mission of the General Surgery residency at Yale is to provide superior clinical and academic training to our residents to prepare them to be the surgical leaders and educators of the future.

The General Surgery Residency at Yale-New Haven Medical Center is a five to seven year academic program, accredited by the ACGME, which emphasizes broad clinical training and scholarly activities. Most of our residents conduct laboratory research for two years under the mentorship of one of our faculty members. Clinical rotations take place in 3 different hospitals to assure a wide variety and depth of surgical experience. Yale has one of the largest endocrine surgical services in the country under the leadership of our dynamic new chairman, Dr. Robert Udelsman, and sections of gastrointestinal surgery, oncology and trauma/critical care are all strong. There is ample experience in surgical specialties, including vascular, pediatric, transplantation and plastic surgery. Dr. Udelsman has hired seven new faculty members in the past year to augment our dedicated full time faculty, which now numbers more than sixty surgeons.

The Yale program is academically oriented and favors students who have had excellent records in medical school. We look for high achievement in the surgical clerkship and strong letters of recommendation from the Dean and at least three other faculty members, two of which must be surgeons. There is no minimum USMLE score. The personal interview is an important opportunity for students to learn firsthand the particular strengths of the Department, to experience the atmosphere, and to meet our enthusiastic residents. Substantial numbers of women and minorities have completed our training program over the past 25 years. International medical graduates are welcome to apply. All applications must be through the ERAS program. Yale surgery residents have been extraordinarily success-

FOR MORE INFO, CONTACT:

Yale University School of Medicine
 Walter Longo, MD
 330 Cedar St.
 107 Farnam Memorial Bldg.
 New Haven, CT 06520-8062
 203-785-2616 203-737-5209 fax
 walter.longo@yale.edu
<http://yalesurgery.med.yale.edu>

ful. Ninety percent pursue additional fellowship training and most go to their first or second choice program. More than two thirds then continue in an academic career.

The Yale program is at the forefront of changes in work hours and environment mandated by regulatory bodies. Residents work no more than 80 hours per week, have at least one day in seven off duty and generally every fourth night on call. New Haven is an attractive and vibrant city with superb cultural opportunities including world class museums and a wide array of theatrical and musical venues. Recreational choices include boating on Long Island Sound, and hiking, canoeing and skiing both in Connecticut and the more northern parts of New England, which are only a few hours away. New York City can be reached in less than two hours. We hope you will include us in your plans for applications and interviews.

AMERICAN UROLOGICAL ASSOCIATION, INC.

Linthicum, MD

FOR MORE INFO, CONTACT:

American Urological Association, Inc. (AUA)
 Brent L. Heathcott, IOM, CAE
 Director, Member Services
 1000 Corporate Blvd.
 Linthicum, MD 21090
 410-689-3724 410-689-3824 fax
 bheathcott@auanet.org



American Urological Association, Inc.*

The American Urological Association (AUA) is the premier professional association for the advancement of urologic patient care. AUA works to ensure that its 15,000 members are current on the latest research and practices in urology.

AUA's mission is to promote the highest standards of urological clinical care through education, research, and in the formulation of health care policy.

CAREER OPPORTUNITIES:

AUA is proud to bring JobFinder, a valuable career networking service, to job seekers in the urological community. Log on to <http://www.auanet.org/jobfinder> to begin your search - free for job seekers.

RESIDENCY CONNECTION:

Residents have a special section on AUA's website, <http://www.auanet.org/residents/resconnect.cfm>. Find information about Candidate membership, AUA Residency Match, AUA Update Series and other relevant topics, like AUA Endourology and Pediatric Urology Matches

BENEFIT OF MEMBERSHIP:

- Free early registration to AUA Annual Meeting, the largest meeting of urologic professionals in the world, with state-of-the-art scientific programming
- Easy access and big discounts for gold-standard educational resources
- CME registry to track/report your CME activities
- Worldwide peer recognition

VALUE OF CANDIDATE (RESIDENT) MEMBERSHIP:

- Free early registration for the AUA Annual Meeting
- Free subscriptions to *The Journal of Urology*, *AUA News*, and the *Health Policy Brief*
- Reductions on AUA's educational products, courses and services

STANFORD UNIVERSITY SCHOOL OF MEDICINE

Palo Alto, CA

FOR MORE INFO, CONTACT:

Stanford Univ School of Medicine
 Kathy Combs, Residency Coordinator
 650-723-4537 650-723-4055 fax
 kacombs@stanford.edu
<http://urology.stanford.edu/residents/index.html>

The Department of Urology of the Stanford University School of Medicine offers a postgraduate residency training program designed to prepare selected physicians to evaluate, understand, and manage medical and surgical aspects of genitourinary disorders. The duration of the residency program is six years, which consists of two preliminary years of General Surgery training followed by four years of Urology training.

In addition to providing a rigorous clinical training program, from its inception the Urology program at Stanford has fostered a unique atmosphere of scientific curiosity and endeavor. Through the years, this has manifested itself in ground-breaking basic and clinical research in renovascular hypertension, adult and pediatric urinary tract infection, treatment of urinary incontinence, neurourology, urinary tract physiology, anatomy and cellular biology of the prostate gland, and genitourinary oncology. The large number of Stanford alumni currently holding academic faculty positions and Chairmanships in Urology is testimony to this history. The most important manifestation of this academic atmosphere is, however, the attention to detail and scientific approach to Urology that characterizes the Stanford Urologist, whatever the location and nature of practice.

UNIVERSITY OF ARIZONA

Tucson, AZ

FOR MORE INFO, CONTACT:

University of Arizona
Rosemary Balderrama,
Program Coordinator
1501 North Campbell Avenue
Box 245077
Tucson, AZ 85724
520-626-6895 520-626-4933 fax
rebalderr@u.arizona.edu

CRAIG V. COMITER, M.D.,

Program Director

The Urology Residency Program at present is set up as a two plus four commitment, with the first two years in general surgery. Upon successful completion of their preliminary two years, the residents then enter into a four-year urology program. The four years are set up in blocks of four months, with 16 months spent as a junior resident, 8 months of research time and 24 months as a senior/chief resident.

We have four facilities for resident education: University Medical Center; University Physicians Hospital; Southern Arizona Veteran's Affairs Health Care System; and Tucson Medical Center. Each facility serves a unique role in the education of the residents. University Medical Center provides the core of your education, exposing you to a diverse experience in urologic care in close association with the University faculty - each of whom are fellowship-trained. Tucson Medical Center provides an opportunity to work with 8-10 private urologists providing general urologic care. The SAVAHCS provides our residents with the opportunity to serve as the patients' primary physician, mastering the skills associated with patient-physician relationships, communication skills, and optimization of clinical decision-making. The University Physicians Hospital provides an intensive robotic and laparoscopic surgical experience.

The research experience is designed so each resident can gain exposure to the fields of basic science and clinical research. A project is selected under close faculty mentoring. Study design, methodology and study completion are primary resident responsibilities. Our residents have been very successful in their research endeavors, presenting at local, national and international meetings.

The full time academic faculty include: Craig Comiter, M.D., specializing in female urology and neurourology; Sanjay Ramakumar, M.D., specializing in robotic and laparoscopic surgery; Jonathan Walker, M.D., specializing in urologic oncology; Matthew Gretzer, M.D., specializing in urethral stricture disease and BPH; Martin Schiff, M.D., specializing in transplantation, pediatrics, and general urology; Martin Dresner, M.D., specializing in urologic oncology, pediatric urology, and general urology.

UNIVERSITY OF CONNECTICUT

Farmington, CT

FOR MORE INFO, CONTACT:

Univ of Connecticut School of Med,
Division of Urology
Brenda Deraleau, Program Coordinator
263 Farmington Avenue, MC3955
Farmington, CT 06030
860-679-7580 860-679-1276 fax
Deloy@nso.uhc.edu

PETER ALBERTSEN, M.D.,

Program Director



We are part of an integrated hospital network that provides comprehensive primary and specialty care to over one million citizens residing in the greater Hartford metropolitan area and Northern Connecticut. The urology faculty consists of over fifteen academic and clinical urologists who can provide you with specialized training in oncology, stone disease, incontinence, infertility, impotence, laparoscopy and pediatrics in addition to general urology. Many of the faculty are actively involved in research in addition to student and resident education.

Our web site <http://health.uhc.edu/clinicalservices/urology/residency.htm> outlines the urology curriculum and provides information concerning the questions most frequently asked by residency applicants. Our program format consists of a preliminary year in the University of Connecticut Affiliated Program in General Surgery followed by four years of urology training. Some of our graduates choose to enter private practice upon completing the program, while others have gone on to additional fellowship training and academic careers. Our program is designed to provide you with a competitive, comprehensive education in urology that will allow you to follow the career path of your choosing. We appreciate your interest in our program and look forward to hearing from you.

UNIVERSITY OF MISSISSIPPI MEDICAL CENTER

Jackson, MS

FOR MORE INFO, CONTACT:

University of Mississippi Medical Ctr
Nancy Bridges,
Program Coordinator
2500 North State Street
Jackson, MS 39216-4505
601-984-6603 601-984-5190 fax
NBridges@surgery.umsmed.edu

The Urology residency program of the University of Mississippi Medical Center (UMMC) is a fully accredited five-year program, which includes one preliminary year in General Surgery and four years in Urology. Two residents are selected each year. Appointments for the urology residency are finalized with the American Urological Association Residency Matching Program. Appointments for PGY-1 surgical training are finalized with the National Residency Matching Program, and both residents do their general surgery training at the University of Mississippi Medical Center.

The urology residency is structured to provide graduated responsibilities in the clinics and operating rooms in addition to the opportunity to participate in basic and clinical investigation. The urology residency-training program at the University of Mississippi is committed to full preparation of its participants for the ever-changing practice of urology and provides a sound base for fellowship training or an academic career.

Residency assignments include four distinct rotations:

University Hospitals and Clinics Adult Service Veterans Affairs Medical Center (located adjacent to UMMC) University Hospitals and Clinics Pediatric Service Mississippi Baptist Medical Center under the aegis of the Mississippi Urology Clinic The urologic house officers are responsible for all elements of patient care at the University and VA Hospitals. Residents are the primary surgeons for all operative procedures, and, overall, each resident performs over 2,000 operations in adults and 200 operations in children during the four years. Continuity of patient care is assured by participation in outpatient clinics of the University of Mississippi Medical Mall and the Veterans Administration Hospital. Residents rotate on the pediatric urology service in the second and fourth years. There is also an inpatient experience at the Mississippi Methodist Hospital and Rehabilitation Center. Residents assigned to Pediatric Urology participate in the Infertility Clinic conducted by the Department of OB-GYN.

UMMC is the only academic medical center in the state and, thus, attracts a large patient volume with a variety of pathology. The Division of Urology is an active participant in the Southwest Oncology Group and there is abundant oncologic surgery. The residents have a large exposure to pediatric urology and extracorporeal shock wave lithotripsy at the University Medical Center.

The urology faculty is devoted to teaching and scholarly activity. In addition to informal instruction on rounds and direction in the conduct of research projects, there are four hours of planned conferences each week, a monthly Journal Club, and periodic visiting professorships.

The University of Mississippi Medical Center is undergoing unprecedented growth. The largest expansion project in the Medical Center's history, totalling \$211 million, was completed in 1999 and included a children's hospital and a woman's hospital in addition to multiple other projects. A second construction phase is now underway to add a critical care hospital (already occupied), a new 256-bed adult hospital, a comprehensive outpatient cancer center, an ambulatory surgery center and a two-story expansion of the children's hospital with new operating suite.

Charles R. Pound, M.D., is the Chief of the Division of Urology and director of the Urology Residency Training Program. The division is in a period of growth with plans to become a separate department in the near future. Recruitment of additional faculty is in progress with an initial emphasis on subspecialists in oncology and laparoscopy.

The New York City Free Clinic: A Model for Comprehensive Free Healthcare

By Deepti Anbarasan, First Year Medical Student, New York University School of Medicine

In 2002, the US spent \$5,267 per person on healthcare. By comparison, the New York City Free Clinic (NYCFC) spends a yearly average of only \$88.94 per patient to provide comprehensive free healthcare services, including specialty referrals, counseling and patient education to uninsured New Yorkers.

Escalating healthcare costs have commoditized health insurance into a luxury that two million New Yorkers lack. Despite the efforts of successful public insurance programs like Medicare, Medicaid, and Family Health Plus, urgent action must be taken to mitigate the disparities in access to healthcare. In an effort to address this crisis, the NYCFC opened its doors in March 2002 at Sidney Hillman Health Center in Manhattan to specifically address the healthcare needs of New York's uninsured.

The NYCFC, an all-volunteer staff of New York University (NYU) medical students, undergraduates, and physicians, believes that high-quality healthcare is the right of all individuals, families and communities, irrespective of socioeconomic or health status. Embracing a team-oriented approach to care, medical students have worked actively with physician volunteers to assess and treat nearly 1,000 New Yorkers through over 1,700 visits since the clinic opened. Additionally, the NYCFC provides an invaluable learning environment wherein physicians and students practice medicine in its purest form and make treatment decisions, regardless of the patient's personal financial status.

The NYCFC is New York's only comprehensive free healthcare clinic, providing at no cost to patients the full range of healthcare services. Through collaborative relationships with the Institute for Urban Family Health, NYU School of Medicine, Bellevue Hospital Center, and NYU Medical Center, the NYCFC provides free primary and specialty care, social services, laboratory testing, and radiology services to all patients. The deep commitment of its organizational partners, volunteer base, and management has allowed the NYCFC to develop an effective, streamlined model of fiscal efficiency, which has since been used to establish free clinics in other communities. The NYCFC has worked with several other medical schools in New York and throughout the country to establish free clinics for the uninsured and underserved.

The NYCFC has been widely acclaimed a success and an essential resource for New Yorkers. Publications such as the Village Voice and Service Matters have recognized the NYCFC for the uniquely comprehensive services it provides. The New York Press named the NYCFC the best free clinic in New York. As one patient states, "The NYCFC is a fantastic service to the community because it is very hard to get good healthcare today. I get top of the line care, supervised by the best people in their specific expertise. The NYCFC gives people peace of mind, security that there are doctors to help. Getting free healthcare is unheard of, especially in this maze of New York City's health services. The NYCFC is the best of the best."

Building on the tremendous success of the NYCFC's cost-effective model for comprehensive free care, the NYCFC is now working to expand to care for more uninsured New Yorkers and implement new prevention and outreach strategies. Funding is necessary to cover the costs of additional specialty referrals, patient education materials, and other essentials of the NYCFC's comprehensive free care. All financial contributions made to the NYCFC go directly to providing patient care and are tax-deductible. If interested in learning more about the clinic or in assisting with the clinic's mission of serving the healthcare needs of the uninsured, please visit www.med.nyu.edu/nycfreeclinic.

The views expressed in this article are solely those of the author and do not necessarily reflect the views of GradExchange, Inc.

The Doctor Job

PERSONAL STATEMENT SERVICE

A good personal statement can mean the difference between a Match and a Miss. Avoid the clichés and pitfalls that program directors hate and get professional editing of your personal statement or counseling towards the creation of a personal statement from scratch. With our help, you can get into the residency program of your choice.

www.TheDoctorJob.com

1.800.591.4842



Christiana Care Residency Programs

Challenging, fully accredited residency programs in all major specialties

- *Diagnostic Radiology*
- *Emergency Medicine*
- *Emergency Medicine/ Internal Medicine*
- *Family Medicine*
- *General Practice Dentistry*
- *General Surgery*
- *Internal Medicine*
- *Medicine-Pediatrics*
- *Obstetrics and Gynecology*
- *Oral and Maxillofacial Surgery*
- *Osteopathic Family Medicine*
- *Osteopathic Trad. Rotating Internship*
- *Pastoral Care*
- *Pharmacy Practice*
- *Podiatric Medicine & Surgery*
- *Surgical Critical Care*
- *Vascular Interventional Radiology*



CHRISTIANA CARE IS A NONSECTARIAN, NOT-FOR-PROFIT HEALTH SYSTEM AND ONE OF THE NATION'S LARGEST, NONGOVERNMENTAL TEACHING INSTITUTIONS. Located in northern Delaware, our suburban and downtown campuses offer the region a complete spectrum of health care services:

- Two acute care hospitals; 1,100 beds and 52,148 admissions
- Level - I Trauma; Level - 3 Neonatal ICU
- Regional Centers of Excellence (Cardiovascular, Cancer, Infectious Diseases, General Medicine and Surgery, Physical Medicine and Rehabilitation, Preventive Medicine and Women's Health)
- Accredited by JCAHO - 2004 survey
- Regional bone marrow transplant program
- Integrated network of primary care and community health services



Visit us on the web at
www.christianacareresident.org

At Christiana Care, you'll find...

- Strong academics
- Nationally recognized faculty
- Widely diverse patient population
- Collegiality and lots of "hands-on" learning
- Residents respected as "physicians"
- Highly competitive salary and benefits
- Well-staffed, cooperative ancillary support
- Research and fellowship opportunities
- Outstanding career placement
- Affiliated with Thomas Jefferson University, Jefferson Medical College, Philadelphia, PA

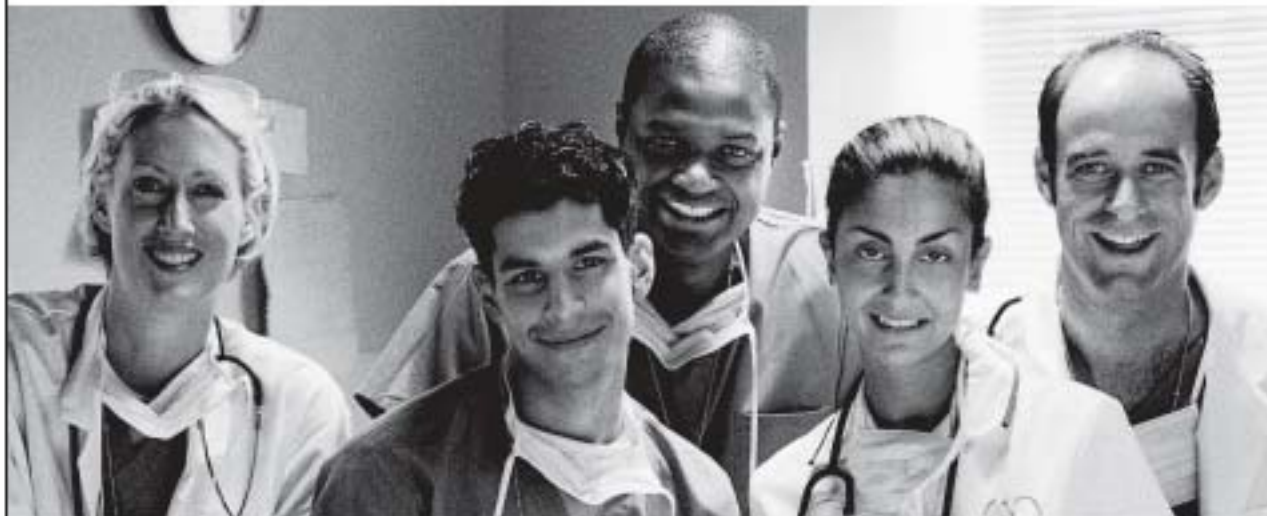
Celebrating beyond 100 years in postgraduate medical education!



CHRISTIANA CARE
HEALTH SYSTEM

Wilmington, Delaware

Future doctors need an Advocate.

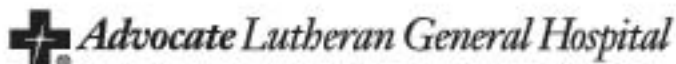


**Learn at one of the nation's best hospitals and top teaching institutions:*
Advocate Lutheran General Hospital and Advocate Lutheran General Children's Hospital**

As the largest independent academic medical center in Illinois, our postgraduate training programs combine a commitment to clinical excellence and the latest research all in a supportive, scholarly learning environment. Affiliated with many of the top academic universities and medical schools in Chicagoland, we offer an extensive selection of residency and fellowship training programs to meet your educational needs.

Each year, more than 75 medical students choose Lutheran General Hospital to complete their residency and fellowship training in specialty programs such as family medicine, internal medicine, obstetrics/gynecology, pediatrics, psychiatry, emergency medicine, surgery, neonatal/perinatal medicine, pediatric critical care medicine, cardiology, gastroenterology, geriatrics and hematology/oncology.

Giving future doctors the skills and expertise to care for patients is what we do best. To learn more about the graduate medical education programs at Advocate Lutheran General Hospital and how we can meet your educational goals, call us at 847-723-8040 or visit us on-line at www.advocatehealth.com/residency.



*Advocate Lutheran General Hospital has been named nine times in the last 10 years as "one of the 100 Top Hospitals and among the 15 top major teaching institutions in the nation" by Solucient.

Take our virtual tour and hear what our residents are saying about us!

www.advocatehealth.com/residency