

# CAREER INSIGHTS IM

THE CAREER PLANNING GUIDE FOR INTERNAL MEDICINE RESIDENTS

WINTER 2006/SPRING 2007

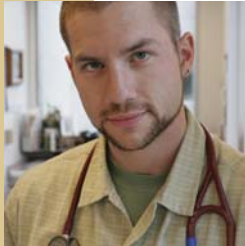
**EMPLOYER PROFILES**  
Information on Featured Physician  
Employers & Current Vacancies



The Print Companion to the [CareerMD.com](http://CareerMD.com) Website

# Imagine...

## Quality of medicine. Quality of life.



Our state-of-the-art health care facilities and nationally acclaimed programs and services not only allow you to fulfill your potential as a physician, but also give your patients access to the highest quality of care.

**Providence Health & Services** has **internal medicine** physician opportunities in locations that will inspire you. The choice is yours.



**Alaska • California • Montana • Oregon • Washington**

[www.providence.org/physicianopportunities](http://www.providence.org/physicianopportunities)

Please send CV/references to [judy.brant@providence.org](mailto:judy.brant@providence.org).  
For more information, please call toll-free 1-866-504-8178  
or visit us on the Web.

**Providence Health & Services**

Providence Health System  
Providence Services  
Little Company of Mary

# IASIS

HEALTHCARE. Where you could be.

[www.iasishealthcare.com](http://www.iasishealthcare.com)

## Pick your next sunset.



Contact Robert Porter: 1 (877) 844-2747, ext. 1247 • Fax CV: (615) 467-1293 • email: [doctors@iasishealthcare.com](mailto:doctors@iasishealthcare.com)

IASIS Hospitals offer the finest aspects of medical practice in appealing locations (with lifestyle beyond compare). Our facilities continue to keep pace with the growing needs of our surrounding communities in **Arizona, Florida, Nevada, Texas, and Utah**. Join us in an environment where your skills will truly make a difference.

### Internal Medicine Opportunities:

- Arizona** • Phoenix, East Valley
- Florida** • Tampa
- Texas** • Pt. Arthur/Beaumont & San Antonio
- Utah** • Layton & Salt Lake City

### Internal Medicine / PEDS Opportunities:

- Texas** • Pt. Arthur/Beaumont
- Utah** • West Jordan

# CAREER INSIGHTS IM

## THE CAREER PLANNING GUIDE FOR INTERNAL MEDICINE RESIDENTS

### EMPLOYER PROFILES

Alaska Native Tribal Health Consortium	2
Alaska Native Medical Center	2
Alegent Health	2
American Healthcare Recruiting	3
Aspen Medical Group	3
Banner Health	3
Carilion Health System	4
Central Maine Internal Medicine	4
Central Utah Clinic	4
CHW Medical Foundation	18
Conway Medical Center	5
Door County Memorial Hospital	5
Fairbanks Memorial Hospital	5
Fairview Health Services	6
Franciscan Medical Group	6
HCA Physician Recruitment	6
Healthcare Partners	7
Highlands Regional Medical Center	7
Lasix Healthcare	Inside Front Cover
IHC Group of Companies	7
Illinois Primary Healthcare Association	8
Imperial Beach Health Center	Cover
Jordan Medical Consultants	8
Lake Hospital System	8
MaineGeneral Medical Center	9
Mercy Medical Center - Des Moines	9
MidMichigan Medical Center	9
Mid-Atlantic Permanente Medical Group	Cover
Morton Plant Mease Primary Care	10
National Rural Recruitment & Retention Network	10
Northwest Community Health Recruitment Collaborative	11
Panther Enterprises	12
Parma Community General Hospital	11
PeaceHealth	Inside Back Cover
Permanente Medical Group	1
PriMed	12
Providence Health System	Inside Front Cover
Rockwood Clinic	12
Select, Inc	12
Seton Highland Lakes Hospital & Clinics	13
SHARP Rees-Stealy Medical Group	13
Sherman Health	Cover
Sigma Medical Group	13
Southern California Permanente Medical Group	17
St. Joseph's Health Center	14
St. John's Regional Medical Center	17
Tanner Health System	14
TeamHealth	17
The Portland Clinic	14
Tri-State Community Health Center	14
United Medical Associates, PC	15
United Medical Associates	15
United Medical Centers	15
Valley Baptist Medical Center	16
Weatherby Locums	16
Yakima Valley Farm Workers Clinic	16, 19

### OTHER ADVERTISERS

The Doctor Job	11
The Physician's Survival Guide for the Hospital	19

PUBLISHING INFORMATION: Volume 1, 2007. CAREER INSIGHTS IM is published by GradExchange, Inc., PO Box 706, New Haven, CT 06503, www.CareerMD.com, (800) 355-2626. Copyright (c) 2007 by GradExchange, Inc. All rights reserved. REPRODUCTION: No part of this publication may be reproduced or transmitted in any form or by any means, electronic or mechanical, including photocopying, recording, Internet or digitized reproduction, or any information retrieval system, without written permission. When necessary, permission will be granted by GradExchange, Inc.



## Achieve balance

Isn't it time you enjoy a more balanced life? The Permanente Medical Group knows that healthy physicians provide better health care. That's why we encourage our physicians to take time for their personal lives—so they can better appreciate their professional careers. We believe this thing called 'work-life balance' means more than having a few weeks of vacation to recharge. It's having the time to breathe, to eat breakfast and dinner at home, and to appreciate the diversity of life around you. Here you'll have the support, and the time, to do whatever makes you, you. At TPMG, you won't just look after the well-being of others, you'll have someone looking after the well-being of you. Bring your practice to us.

### THE PERMANENTE MEDICAL GROUP DELIVERS:

- An environment and culture that encourage and support physicians dedicated to patient care as well as research and teaching
- Competitive, dependable salary
- Outstanding benefits in addition to the base salary
- Eligibility for an annual incentive bonus as a Senior Physician/ Shareholder
- Reimbursement for relocation expenses
- Home Loan Program
- Physician Mentoring Program

Please contact us for more information:  
Gordon Leung (Central Valley Opportunities)  
Kathy Uchida (Bay Area Opportunities)  
Narlyn Villaruel (Hospitalists Opportunities)

The Permanente Medical Group, Inc.  
1800 Harrison Street, 7th Floor  
Oakland, CA 94612  
**Toll-Free: (800) 777-4912**  
**Phone: (510) 625-4949**  
**Fax: (510) 625-5487**

<http://physiciancareers.kp.org>

KAISER PERMANENTE  thrive

## ALASKA NATIVE TRIBAL HEALTH CONSORTIUM

Alaska



Statewide Professional Recruiting provides recruiting services and support to Tribally managed hospitals and clinics in rural and urban Alaska.

All our programs are tribally managed/tribal hire and are eligible for I.H.S. Loan Repayment, malpractice covered under Federal Tort Claims Act.

We also coordinate rotations for Students and Residents; our program is designed to introduce students and residents to ANTHC and Tribally operated programs. We have 9 Family Practice rural rotations and 7 department specific rotations in Anchorage.

We currently accept applications for rotations from:

- 3rd and 4th year Medical Students
- 2nd and 3rd year Residents
- 2nd year Physician Assistants Students

Please explore our website, [www.anthc.org](http://www.anthc.org)

**For more information contact: Alaska Native Tribal Health Consortium, Carrie Agibinik, Physician/Midlevel Recruiter, 907-729-3679, 800-528-6680 Option 3, 907-729-3969 Fax, [ciagibinik@anmc.org](mailto:ciagibinik@anmc.org). Edna Bolton, Medical Student/Resident Coordinator 907-729-3633, 800-528-6680 Option 5 [enbolton@anmc.org](mailto:enbolton@anmc.org)**

## THE ALASKA NATIVE MEDICAL CENTER

Anchorage, AK



The Alaska Native Medical Center (ANMC) is a 150 bed hospital, located in Anchorage, AK (count includes 14 ICU beds). ANMC also features a large multispecialty team in a level II trauma center. The hospital serves as a primary source of care for more than 16,000 beneficiaries living in and around Anchorage; is a referral center for more than 130,000 Alaska Natives and American Indians living throughout the State; and provides specialty service to seven field hospitals.

ANMC is recruiting for a BC/BE Internist/Hospitalist and a Pulmonary/CC physician to join a dynamic and collegial group providing the highest quality patient care to the Alaska Native population. For the Internist, ICU experience and procedural skills are highly desirable. For the Pulmonologist, this physician is required to provide a full range of inpatient and outpatient procedural and consultative services.

Advantageous schedule allows opportunities to enjoy an abundance of recreational activities. Anchorage is a large cosmopolitan city with rich cultural diversity. A busy international airport offers direct flights to Europe and the lower 48 states. Quality public schools, state university and two area colleges. J-1/H-1 opportunity. Excellent benefits, competitive salary, CME allowance, 401(k) option plan.

**To Apply: Please visit [www.anthc.org](http://www.anthc.org) Or contact Yolonda Baucham Knecht at 907-729-3690, [yaknecht@anthc.org](mailto:yaknecht@anthc.org)**

## ALEAGENT HEALTH

Omaha, NE



Alegent Health is a not-for-profit, faith-based healthcare system recognized in Modern Healthcare's Top 100 Integrated Healthcare networks. Our focus is on healthcare delivery, which cares for the body, mind and spirit of people while emphasizing prevention, wellness and health education.

**HOSPITALIST REGIONAL MEDICAL DIRECTOR:** Experienced, board certified physician needed to develop and implement Hospitalist program across our system. Ideal candidate will possess exemplary clinical and interpersonal skills with a dedication to leadership. Competitive base salary with quality incentives, top-of-the-line benefits package and more.

**HOSPITALISTS:** Alegent Health is currently looking for Internal Medicine physicians to join our Hospitalist programs. Our opportunities offer a guaranteed salary, bonus, CME, an outstanding benefits package, and more. Choose between a private practice model or shift model.

**TRADITIONAL PRACTICE:** Alegent Health Clinic, the area's largest and predominant multi-specialty group, offers you the security of an employed position with the freedom of a private practice. Choose to practice in a rural or metropolitan setting. 2 year guaranteed salary, top of the line benefits package, relocation and generous CME are some of the highlights of this opportunity.

Alegent Health is the area's leading comprehensive health network with people dedicated to improving the health and well being of the people in the community.

Sorry, no J1-Visas opportunities available.

**For more info, Contact: Alegent Health, Julie Lambert, (877)-244-8027, (402)- 343-4594 Fax, [lambert@alegent.org](mailto:lambert@alegent.org), [www.alegent.com](http://www.alegent.com)**

## AMERICAN HEALTHCARE RECRUITING

Nationwide

National Retail opportunities for Family Practice and Internal Medicine.

Excellent Innovative opportunity for Family Medicine Physicians/Internal Medicine Physicians (must be willing to see 2 yrs old and up) to enjoy a new career in Retail Medicine. Major metro areas as well as suburban areas will set up clinics right inside large retail centers. The clinics will treat patients from infants to geriatrics.

The benefit package and pay rate will be very competitive. 120 to 140 per year, profit sharing, standard health and 401K, CMEs, MPI, Vacation negotiable.

Full time, Part time, and Locum opportunities are available. They will accept BC, BE, DO, and General Medicine.

This is a nation wide opportunity with locations opening throughout the U.S.

**Please contact: John Frey with American Healthcare Recruiting at 949-218-5297; john-frey@ahcr.net**



### AMERICAN HEALTHCARE RECRUITING, INC.

*Coast to Coast excellence in recruiting and staffing!*

## ASPEN MEDICAL GROUP

St. Paul, MN



### A CAREER WITH ASPEN IS GOOD MEDICINE

Aspen Medical Group is a leading multi-specialty group located in the Minneapolis and St. Paul, Minnesota metropolitan areas. Our mission is to serve patients across the Twin Cities by improving their health through our commitment to quality. Aspen is a group of 160 providers practicing in 21 specialties areas located in 8 clinics that provide a full range of healthcare services. Join over 50 internists providing outpatient and inpatient services. Must be BE/BC. Very reasonable call schedules. Competitive compensation, excellent benefits including CME, malpractice insurance (tail coverage provided) and relocation assistance.

**Please contact: Julie Juba, Aspen Medical Group, 1021 Bandana Blvd. East, #200, St. Paul, MN 55108. Toll Free: 866-415-2600. Fax: 651-642-2796. Email: jjuba@aspenmed.org. Website: www.aspenmed.org. Not a J-1 opportunity.**

## BANNER HEALTH

Multiple Locations



Banner Health

**PRACTICE MADE PERFECT:** Banner Health Systems offer practice options to fit your speciality and your lifestyle. Consider joining Banner Health Systems in one of the following communities:

**Greeley, Colorado:** Employment with single specialty group with option for partnership. You'll join three full time internists practicing traditional internal medicine (inpatient and outpatient). Group members rotate Hospitalist responsibilities every 3rd week. Service area is 272,281. Call schedule is 1:4. Excellent opportunity to build practice to suit desired income and flexibility.

**Loveland, Colorado:** Employment model w/option for partnership with multi-specialty group. Affiliated with McKee Medical center, 132-bed acute care hospital. Service area is 85,000; call schedule 1:6 (when fully-staffed)

**Ogallala, Nebraska:** Employed practice model in new 18-bed acute care facility. Features include critical care access, ambulatory service clinic, two large OR suites and medical clinic. Service area is 15,663. Call schedule 1:5; shared with family medicine physicians.

**Torrington, Wyoming:** Employed model in a 25-bed critical access facility. Service area is 15,422; call schedule 1:5. Located in southeastern Wyoming with access to many national attractions and urban settings. WWAMI Clerkship site.

**Wheatland, Wyoming:** Employed model in a 25-bed critical access facility featuring new surgery suite and inpatient unit. Service area is 9,191; call schedule 1:3 negotiable. Located just 20 miles from Medicine Bow national Forest and one-hour from Cheyenne along I-25. WWAMI Clerkship site.

**For more info contact: Banner Health Western Region Physician Recruiting: 1-866-585-5216, Fax: 1-970-392-2099 Email: doctors@bannerhealth.com www.bannerhealth.com**

## CARILION HEALTH SYSTEM

Martinsville, VA



EMPLOYMENT OPPORTUNITY IN SOUTHWEST VIRGINIA: Martinsville, VA – 100,000 service region; 50 miles north of Greensboro, NC, 45 miles east of Roanoke, VA

- Join 10-person primary care group; call at least 1:10
- Take over well-established patient base
- New medical office building 5 minutes from hospital campus
- Ancillary services on-site, plus endoscopy center
- Computerized medical records; over 60,000 active charts
- Responsibilities include inpatient admissions, ICU & nursing home

Competitive first year salary with advancement to physician compensation plan in 2nd year, which offers unlimited earning potential. Incentives and benefits include PAID malpractice and tail, CME allowance, health/life/disability, sign-on bonus, relocation, and Student Loan Repayment Program for newly trained physicians.

Family-oriented community, affordable real estate, and outstanding educational opportunities. Fish, water ski or sail at local lakes, and for car racing enthusiasts, there's the Martinsville Speedway.

Carilion is the largest not-for-profit integrated health system in southwest Virginia, with 9 hospitals, 82 clinics, seven residency and two fellowship programs that are affiliated with UVA and VCOM.

**To find out more, call Andrea Henson at 540-224-5241. You may fax your CV and cover letter to 540-983-1169, or e-mail [ahenson@carilion.com](mailto:ahenson@carilion.com), [www.carilion.com](http://www.carilion.com)**

## CENTRAL MAINE INTERNAL MEDICINE

Lewiston, ME

MAINE: Central Maine Medical Center, a multi-specialty regional referral center offers an exciting practice opportunity to a BC/BE Internist for its employed practice. Join colleagues committed to excellence, and enjoy rotating office and hospital experiences. An attractive compensation and benefits package, including loan repayment, are enhanced by the scenic beauty and abundant outdoor adventure Maine lifestyle affords. Combine your talent and skills with our established excellent reputation of the best physician care.

**Interested candidates, send CV or call: Babette Irwin, Central Maine Medical Center, 300 Main Street, Lewiston, Maine 04240. Fax: 207-795-5696, E-mail: [BIrwin@cmhc.org](mailto:BIrwin@cmhc.org), or call: 800/445-7431. Not a J1 opportunity.**

## CENTRAL UTAH CLINIC

Provo, UT



Central Utah Clinic is seeking to recruit Internists to join a multi-specialty group practice of 80 physicians located in Provo, Utah in 2006-2007. Central Utah Clinic typically attracts physicians that value a team approach to care, evidence-based medicine, self governance and self management. Utah Valley rests under the shadow of Mount Timpagnogos and just 40 minutes from the Salt Lake Valley. We are surrounded with the beauty of mountains on the east and Utah Lake on the west. All the favorite activities enjoyed throughout the four seasons are here to enjoy. Water sports of all kinds, skiing, hiking, fishing, camping, and magnificent scenery await your photographic skills and personal delight. Park City, which is about a 40 minute drive up Provo Canyon, has a world-class ski resort and was a venue for the 2002 Olympic World Games. Sundance ski resort where the world-famous Sundance film festival is held, is a short 25 minute drive up Provo Canyon. Details: -Seeking 3 BC/BE Internists -One year partnership track with minimal buy-in. -Relocation package available -Guaranteed first year salary Full -Medical/Dental Benefits, Possible stipend for last year of residency if qualified.

**For more info, contact: Mark Kershaw, Administrator, Internal Medicine, Phone: (801) 354-8276, Fax: (801) 429-8196, Email: [mkershaw@centralutahclinic.com](mailto:mkershaw@centralutahclinic.com), [www.centralutahclinic.com](http://www.centralutahclinic.com)**

## CONWAY MEDICAL CENTER

Conway, SC

### COASTAL SOUTH CAROLINA:

Conway Medical Center, a 160-bed community hospital, is seeking BC/BE Internists for several practice opportunities. Conway, South Carolina, is located just eight miles from Myrtle Beach. Enjoy 60 miles of public beaches, over 100 golf courses, hundreds of fine restaurants, an international airport, affordable living and excellent schools. We also offer a strong financial package including income support assistance and relocation.

**For more information, contact Kathie Lee, Conway Medical Center, 300 Singleton Ridge Road, Conway, South Carolina 29526. Telephone 843-234-5139 or fax CV to 843-347-8056.**

Not a J-1 opportunity.

## DOOR COUNTY MEMORIAL HOSPITAL

Door County, WI

**OUTSTANDING INTERNAL MEDICINE OPPORTUNITY** - Wisconsin's Door County Peninsula is often referred to as the Cape Cod of the Midwest. Sandy beaches, breath taking scenery and family-friendly communities make Door County a place you will want to call home.

Door County offers a playground for all seasons. This area boasts eleven golf courses, hundreds of miles of hiking and biking trails, dozens of beaches, horseback riding, camping and boating are just part of the fun. Imagine yourself chartering a boat and spending the afternoon grappling with a trophy salmon or brown trout on Lake Michigan. Maybe you would prefer to stroll along the scenic shorefronts or take a sunset cruise after a fulfilling day at the clinic. With thousands of acres of nature preserves and parks, the possibilities are endless. From season to season and shore to shore, Door County has it all.

The new Internist will join North Shore Medical Clinic, a department of Door County Memorial Hospital. The hospital offers a full range of services and specialties including a skilled nursing facility for long-term care and rehabilitation services, key services include cardiac rehabilitation, cancer treatment, diagnostic imaging; physical and occupational therapy; respiratory care and rehabilitation; surgical/outpatient services, emergency/urgent care services; and a birthing center. North Shore Medical Clinic is part of and attached to the Hospital in Sturgeon Bay. Call coverage would be 1:8. Outstanding income package and loan repayment are offered.

**For further details, contact: Colleen Schmidt @ 800-859-6570 or email ColleenSchmidt1@execpc.com.**

## FAIRBANKS MEMORIAL HOSPITAL

Fairbanks, AK



Fairbanks Memorial Hospital/Denali Center (FMH/DC) is a 162-bed, acute care, progressive community hospital that values professional and technical excellence. Co-located with FMH, Denali Center is a 90-bed extended care facility specializing in restorative nursing, geriatric care and long-term skilled care.

FMH/DC is owned by the Greater Fairbanks Community Hospital Foundation, a non-profit community group, and operated by Banner Health Systems. Fairbanks Memorial Hospital serves as the primary referral center for Interior Alaska. FMH/DC is accredited by the JCAHO, has over 132 physicians on staff and 1,200 employees.

Fairbanks is Alaska's second largest city with a population of 83,000. No sales tax or income tax. Home to the University of Alaska. Excellent reimbursement with no managed care.

Fairbanks Memorial Hospital is recruiting internal medicine physicians to the community to join multi-specialty clinics, community health centers or private practices.

**For more info, contact: Fairbanks Memorial Hospital, Paul Allan, Medical Staff Recruiter, 1650 Cowles Street, Fairbanks, AK 99701, Email: paul.allan@bannerhealth.com, Phone: (907) 458-5203, <http://www.medimotion.com/mips/denali>, <http://www.bannerhealth.com>**

## FAIRVIEW HEALTH SERVICES

Minneapolis and St. Paul, MN

We have opportunities in Minnesota to fit your life.

Join us in traditional, blended practices of inpatient/outpatient medicine or inpatient “hospitalist” medicine. We have opportunities in Minneapolis and St. Paul, communities within one hour of the Twin Cities and in the beautiful north woods of Minnesota. Receive competitive salary with productivity component, comprehensive benefits and malpractice insurance.

**Contact: Tara Miller, 800-842-6469, 612-672-2986 (fax), 612-672-7300 (TTY), [recruit1@fairview.org](mailto:recruit1@fairview.org). EEO/AA Employer. No J1 opportunities.**

## FRANCISCAN MEDICAL GROUP A Part of Franciscan Health System

Washington

### Franciscan Medical Group

*A Part of Franciscan Health System*

#### Internal Medicine Outpatient

**Join a healthcare system that is ranked top among the integrated healthcare networks in the nation and rated “Best Place to Work” by Washington CEO magazine.**

Franciscan Medical Group is committed to being the South Puget Sound’s first choice for healing body, mind and spirit. We are looking for internal medicine physicians who embody a passion for excellence to help us achieve our goal.

We are 35 primary and specialty care outpatient clinics located throughout the South Puget Sound. We are seeking BE/BC internal medicine physicians who are committed to caring for patients in all walks of life. We have opportunities in several clinics so you will have an opportunity to decide what culture and community would best fit your lifestyle. You would share telephone call only, and have access to a broad network of specialists committed to providing the best care for patients.

Clear views of Mount Rainier and the beautiful waters of Puget Sound offer a dramatic backdrop for life in the South Puget Sound. Our clinics are located in communities south of Seattle, in Federal Way, Enumclaw, Gig Harbor, Port Orchard and throughout the greater Tacoma area.

If you are considering an outpatient practice in one of the most beautiful parts of the country, working as an employed physician within a dynamic ‘virtual private practice’ model, Franciscan Medical Group will meet your requirements.

**Franciscan Medical Group is a drug free and tobacco free organization. EOE.**

**We offer an outstanding benefit package and competitive wages. If you are interested in this opportunity apply online at <https://www.fhshealth.org/fmgjobs> or contact Peggy Hawkes, Director of Professional Recruitment at [peggyhawkes@fhshealth.org](mailto:peggyhawkes@fhshealth.org) or call 253-428-8595.**

## HCA PHYSICIAN SERVICES - MT. DIVISION

Utah and Idaho



Immediate Needs for Internal Medicine Physicians in the Intermountain Region. Where do you want to live? We understand that it’s no use making a good living unless you make a good life as well. You should live where you want to live. We’re positioned to place you near one of our many facilities across America. HCA Hospitals are located in 16 of the 20 fastest growing communities. We have opportunities in big cities and rural areas, near sandy beaches and skyward reaching mountains; wherever your internal compass points, it’s likely that we can help guide you to a destination that will match your preferences. HCA invites you to consider practice opportunities in the Intermountain Region. We are currently representing outstanding opportunities in Utah and Idaho. We are looking for qualified candidates to join well-established community based practices. Attractive opportunities exist for employment or private practice, group or solo to fit your requirements. The opportunities are supported by excellent facilities that are recognized for their high quality of care and commitment to patient and physician satisfaction. Combining great opportunities with great locations...who can place you there, we can!

**For further information about this and other opportunities in the Intermountain Region contact: Eric Rose HCA Physician Recruitment (801) 568-5932 [Eric.Rose@HCAHealthcare.com](mailto:Eric.Rose@HCAHealthcare.com)**

## HEALTHCARE PARTNERS

Torrance, CA



### Excellent Internal Medicine/Family Practice Opportunities

Southern California's leading physician-owned multi-specialty medical group has opportunities for full-time Internal Medicine physicians for our Urgent Care Centers in our Los Angeles, Pasadena and Long Beach, California regions. Candidates must be Board certified, have a current California medical license, BLCS, ACLS and PALS required. Prefer bilingual Spanish. We are a large, dynamic and well-established group and offer a balanced professional and personal lifestyle, as well as excellent compensation with Partnership Track and benefits.

**Email CV to: HealthCare Partners, Clinician Recruitment, 19191 So. Vermont Ave, Ste 300, Torrance, CA 90503, Email: [sdeming@healthcarepartners.com](mailto:sdeming@healthcarepartners.com), Apply on line @ <http://www.healthcarepartners.com/careers/careers.asp> Clinician/Physician Opportunities**

## HIGHLANDS REGIONAL MEDICAL CENTER

Sebring, FL



EDCare Management, Inc. is seeking 1 full-time physician BC/BE in Internal Medicine for an excellent Hospitalist opportunity in Sebring, Florida. Highlands Regional Medical Center is a modern 125-bed facility with an array of medical specialties including Cardiology, Internal Medicine, ENT, Emergency Medicine, Infectious Diseases, and Pediatrics. This hospitalist position is 100% inpatient based and requires ACLS & PALS certification. Daytime coverage is ten (10) hours per day with a rotating seven (7) day on/seven day off schedule. EDCare also offers an excellent compensation package including company paid malpractice insurance, health insurance, 401K program and relocation allowance.

Sebring, Florida is approximately 90 miles south of Orlando and southeast of Tampa. Close proximity to these two major cities provides plenty of entertainment, culture, shopping, dining, and more. Home to many local fresh water lakes, Sebring also offers plenty of local outdoor activities including fishing, boating, swimming and water skiing.

EDCare Management offers an experienced team that is dedicated to improving the quality and efficiency of the delivery of healthcare. We look forward to adding a qualified and experienced Hospitalist to our team.

**For more information contact: Deanna Maloney, Physician Recruiter, 866.625.6639, 972.562.7991 Fax, [dmaloney@edcaremgt.com](mailto:dmaloney@edcaremgt.com), [www.edcaremgt.com](http://www.edcaremgt.com)**

## THE IHC GROUP OF COMPANIES

Lawrenceville, NJ



### Alternative Career Opportunity for MDs.

Are you looking for an alternative career path in internal medicine? Do you want a position in which you have an opportunity to influence the practice of medicine and expand patient care options? Consider a career in healthcare communications with IHC Group of Companies (Interlink Healthcare Communications and IneXel Medical Strategy & Communications), a top rated healthcare communications company located in Lawrenceville, NJ, near Princeton.

We are looking for an internal medicine physician to further expand our team of talented medical writers and medical directors (all MDs and PhDs) to work on our growing accounts in the areas of oncology, immunology, endocrinology, metabolic disorders, cardiovascular diseases, vaccination and solid organ transplantation. If you have excellent communication skills, both orally and written, we would like to discuss potential career opportunities with you. We offer a competitive salary and an outstanding benefits package.

**For more information about our company, you can visit us on the web at [www.interlinkhc.com](http://www.interlinkhc.com). Please send your resume with cover letter to Leslie Drake, VP, Human Resources, at [jobs@ihcgo.com](mailto:jobs@ihcgo.com).**

## ILLINOIS PRIMARY HEALTHCARE ASSOCIATION

---

Illinois

Illinois Primary Healthcare Association seeks Internists for Illinois locations. Benefits: Health and malpractice insurance, vacation, CME time. Some qualify for loan repayment.  
Send CV to: Ashley Colwell, [acolwell@iphca.org](mailto:acolwell@iphca.org), or call (217-541-7309).

## JORDAN MEDICAL CONSULTANTS

---

Suburban Boston and Southwest Virginia



**Top Earning Potential in...Suburban Boston and Southwest Virginia.** We are currently seeking qualified internists to join two premier groups in the Northeast and Mid-Atlantic Regions:

**Suburban Boston** – Both full and part time positions are available in affluent suburban communities 20 minutes outside of Boston. The ideal candidate will be someone who can hit the ground running in an established practice and enjoys reaping the rewards of a busy schedule. Utilization of hospitalists allows for minimal call and top earning potential. Lahey Clinic Medical Center is a teaching hospital for Tufts University School of Medicine and offers opportunities for teaching and academic appointment. Enjoy New England living and experience the metropolitan, cultural and recreational amenities of one of the nation's most vibrant cities.

**Southwestern Virginia** – Full time positions are available to join a premier group of four internists in the Roanoke Valley of Virginia. A busy well established practice assures you will rapidly develop a busy patient load. The ideal candidate will enjoy working in a collegial, team oriented environment and have the option to see inpatients or utilize an experienced hospitalist group. Offices are adjacent to a 521 bed tertiary facility that has provided state-of-the-art care to residents of the community for over 100 years. Located in the foothills of the Blue Ridge Mountains the area boasts quality schools, low crime, moderate cost of living and an abundance of year round recreational activities.

At Jordan Medical Consultants we work to understand your particular goals by gaining a thorough knowledge of all your priorities – both personal and professional. We listen to what matters to you.

We represent client opportunities nationwide. Please give us a call and let us know your priorities or visit our website at [www.jordanmc.com](http://www.jordanmc.com).

Convenient and personalized service with the commitment to match physicians to practices that meet their needs.

**Matt Jordan, Jordan Medical Consultants, 636-519-4794, 866-750-7231 (toll free), 636-519-4798 (fax), [matt@jordanmc.com](mailto:matt@jordanmc.com), 743 Spirit 40 Park Drive Suite 233, Chesterfield, Missouri 63005, [www.jordanmc.com](http://www.jordanmc.com)**

## LAKE HOSPITAL SYSTEM

---

Painesville, OH

3IMED Positions available in N.E. Ohio. 2 are employment opportunities with Lake Hospital and the third is traditional independent practice employment leading to partnership. All offer great benefits and work environments. All three require inpatient rounding in addition to office patients.

**For more information contact: Susan Kruger, FACMPE, Physician Services Director, Lake Hospital System, 10 E. Washington St., Painesville, OH 44077, [Susan.kruger@lhs.net](mailto:Susan.kruger@lhs.net)**

## MAINEGENERAL MEDICAL CENTER

Maine

Internal Medicine Openings - Scenic Central Maine

We currently have two full-time BC or BE Internal Medicine private practice openings in Waterville, the home of Colby College. You'll be a short drive away from ski resorts, lakes, the beautiful Maine coast. Join a well-established, outpatient only, primary care practice with the opportunity to moonlight as a hospitalist. Or team up with a growing, single person practice providing both inpatient and outpatient medicine. Competitive salary and benefits for both positions.

Send your CV to Lisa Nutter, [lisa.nutter@mainegeneral.org](mailto:lisa.nutter@mainegeneral.org) or call 1-800-344-6662 for more information or visit [www.mainegeneral.org](http://www.mainegeneral.org)

## MERCY MEDICAL CENTER - DES MOINES

Des Moines, IA



*A member of Mercy Health Network*

Mercy Clinics, Inc. seeks BC/BE Internal Medicine Physicians for two existing clinics and one new clinic. The new clinic is located in a rapidly expanding suburb of Des Moines and the existing clinics are located adjacent to Mercy Medical Center-Des Moines and its sister facility Mercy Capitol-Des Moines. Mercy Medical Center-Des Moines, a member of the Catholic Health Initiatives family, is a 917 bed comprehensive health care facility located on three campuses in Iowa's capital city.

About Mercy Medical Center:

- Newly constructed hospital expansion will be opened in September 2006, complete with facilities for obstetrics, neonatal intensive care, critical care, neurology center and education center
- Rural hospitals in 14 communities
- Growing clinic system with more than 24 metro area family practice and specialty clinics
- Consultative services offered in many areas
- Provide inpatient care for area family practice physicians
- Salary and benefit package is strong and highly competitive
- Lifestyle friendly call coverage

As Iowa's increasingly diverse capital city Des Moines area is home to over 400,000 people offering low crime, great schools, cultural amenities, access to higher education and affordable housing. Des Moines was named in 2004 as USA Today's Most Child Friendly City and in the top 15 Best Overall Metro School Districts in the country by Expansion Management magazine. Principal Real Estate Investors has given Des Moines a top ten rating for Most Affordable Housing.

To interview, please contact Roger McMahon at (515) 643-8323, email [rmcmahon@mercy-desmoines.org](mailto:rmcmahon@mercy-desmoines.org), or fax (515) 643-8831.

## MIDMICHIGAN MEDICAL CENTER

Farwell & Clare, MI

Requirements: Excellent opportunity for a BC/BE internal medicine physician or graduating resident or fellow to practice in mid-Michigan with a growing and dynamic, established Medical Center. Opportunity to work alongside well-respected specialists with a balance of outpatient and inpatient procedures. Reason for Recruitment: Community need. Practice MidMichigan Medical Offices-Farwell or Clare

Other Physicians in Practice: The providers in Farwell and Harrison share call: Rowena Achin, MD, Douglas R. Mienk, MD. Patient and Procedure Mix: all aspects of primary care for an adult population with a balance of outpatient and inpatient procedures and surgeries. Hospital Privileges: MidMichigan Medical Center-Clare.

MidMichigan Medical Center-Clare is a 64-bed acute care facility accredited by the Joint Commission on the Accreditation of Healthcare Organizations. Services include medical-surgical care, obstetrics, pediatrics, intensive care, telemetry monitoring, outpatient services, emergency services, urgent care services, radiology, ultrasound, mammography, computer tomography, nuclear medicine, respiratory care, physical medicine and rehabilitation. MidMichigan Medical Center-Clare also offers specialty clinics in several areas.

Compensation: Competitive, including malpractice plus tail coverage, full medical and dental for physician and family, life insurance, relocation allowance, paid time off, CME allowance and time off, short- and long-term disability. Employed opportunity with MidMichigan Physicians Group.

Schedule: Traditional office hours: Monday through Friday, 8 a.m. to 5 p.m. Physician workweek: 4 ½ days

Communities Served: Clare and Farwell, Michigan, and surrounding areas.

For more info, call: 800-444-6421, [recruitment@midmichigan.org](mailto:recruitment@midmichigan.org)

## NATIONAL RURAL RECRUITMENT & RETENTION NETWORK

Nationwide



FIND OVER 4,500 COMMUNITIES IN 46 STATES AT [HTTP://WWW.3RNET.ORG](http://www.3rnet.org)

3R Net members at non-profit state organizations in 46 states are eager to tell you more about the opportunities that are currently available, and what it's like to live and practice there. The 3R Net is supported by federal and state funding, so there is no cost to you.

Members of the 3RNet partner with the National Health Service Corps (NHSC), and can help identify positions that qualify for both the NHSC's Federal Loan Repayment Program, as well as for the many State Loan Repayment Programs that are also available.

Only you know what is important to you and your family. Our members can help you identify communities that will be a good match with your personal and professional goals. We can connect you with those who know their states the best - the people who live there!

Now is the time to explore the many opportunities that await you. Go to [www.3rnet.org](http://www.3rnet.org) today for more information -- Yes, one stop for opportunities in 46 states.

AL, AK, AR, AZ, CA, CO, CT, DE, GA, HI, IA, ID, IL, IN, KS, KY, LA, MA, MD, MI, MN, MO, MS, MT, NC, ND, NE, NH, NM, NV, NY, OH, OR, PA, SC, SD, TN, TX, UT, VA, VT, WA, WI, WV, WY

For more info, contact: 800-787-2512, 608-687-3993 Fax, [info@3rnet.org](mailto:info@3rnet.org), [www.3rnet.org](http://www.3rnet.org)



## Morton Plant Mease

PRIMARY CARE

### CLEARWATER & ST. PETERSBURG, FLORIDA

*Life's too short to practice medicine just anywhere. Have you considered living in Tampa Bay, on the beautiful Gulf of Mexico? An inviting career opportunity may await you with Morton Plant Mease Health Care, a dynamic, multi-hospital Florida health care organization with an exciting future.*

*Continuously voted one of the top 50 hospitals in America.*

#### ROOM TO GROW FOR QUALITY PHYSICIANS

*(BE/BC only) J1 Visa not eligible*

*Continued growth is creating exciting opportunities for Family Practice, Internal Medicine and Hospitalists for physicians and graduating residents for 2007.*

**FOR MORE INFORMATION, FAX YOUR CV TO  
727-536-5903 OR EMAIL TO [KATHY.SADLER@BAYCARE.ORG](mailto:kathy.sadler@baycare.org)**

**1-800-875-8254 • [www.mpmprimarycare.com](http://www.mpmprimarycare.com) • [www.mpmhealth.com](http://www.mpmhealth.com)**

## NORTHWEST COMMUNITY HEALTH RECRUITMENT COLLABORATIVE

Alaska, Idaho, Oregon, Washington



The Northwest Community Health Recruitment Collaborative, a consortium of the Primary Care Associations of Alaska, Idaho and Oregon, and the Northwest Regional Primary Care Association, recruits family physicians and internists for Community Health Centers (CHCs) throughout Alaska, Idaho, Oregon and Washington.

CHCs are mission-driven public and private non-profit organizations that provide culturally appropriate, comprehensive primary healthcare to vulnerable and medically underserved populations, regardless of ability to pay.

In addition to a variety of competitive compensation and benefits packages, most CHCs offer:

- Paid malpractice insurance
- Paid vacation
- CME reimbursement and PTO
- A reasonable work schedule
- Student loan repayment

If you are dedicated to providing healthcare to the underserved, enjoy working with diverse populations, and thrive in a team-oriented environment, go to one of the websites listed below and complete a candidate profile. Recruitment specialists from your preferred state(s) will contact you to get more information and to refer you to positions that match your experience, qualifications, and interests as available. Student and resident rotation opportunities are also available through the National Health Service Corps SEARCH (Student/Resident Experiences and Rotations in Community Health) Programs offered through the Primary Care Associations of Idaho and Oregon.

Alaska Primary Care Association [www.alaskapca.org](http://www.alaskapca.org); Idaho Primary Care Association [www.idaholiveworkplay.org](http://www.idaholiveworkplay.org); Oregon Primary Care Association [www.orpca.org](http://www.orpca.org); Northwest Regional Primary Care Association [www.nwrpca.org](http://www.nwrpca.org)

**NORTHWEST COMMUNITY HEALTH RECRUITMENT COLLABORATIVE**  
Alaska, Idaho, Oregon, Washington

For more info, contact: Alaska Primary Care Association, Pat Fedrick, 907-929-2727, [pat@alaskapca.org](mailto:pat@alaskapca.org), [www.alaskapca.org](http://www.alaskapca.org), Idaho Primary Care Association, Katrina Hoff, 208-345-2335, [khoff@idahopca.org](mailto:khoff@idahopca.org), [www.idaholiveworkplay.org](http://www.idaholiveworkplay.org), Oregon Primary Care Association, Mary Kate Brousseau, 503-228-8852, [Mbrousseau@orpca.org](mailto:Mbrousseau@orpca.org), [www.orpca.org](http://www.orpca.org), Northwest Regional Primary Care Association, Amy Chang, [achang@nwrpca.org](mailto:achang@nwrpca.org), Karla Clark, [kclark@nwrpca.org](mailto:kclark@nwrpca.org), 206-783-3004, [www.nwrpca.org](http://www.nwrpca.org)

### Parma Community General Hospital

Parma Community General Hospital, a 348-bed, not-for-profit facility offering comprehensive medical care is now recruiting physicians for several specialties.

Located in Parma, Ohio, just minutes from Cleveland Hopkins Airport, with a service area of more than 350,000 people, the Hospital offers a full range of services including inpatient and outpatient surgery, 24-hour emergency care, Heart Center, Cancer Center, complete maternity care and outpatient testing and therapies.

For more information, contact Kari Rish at 440-743-2341.



[www.parmahospital.org](http://www.parmahospital.org)

### The Doctor Job PAIN RELIEF FOR YOUR JOB SEARCH

There are hundreds of physician jobs in every single metropolitan area in the country that are unadvertised and unavailable through recruiters. Finding these hidden jobs requires a proactive, aggressive job search. Every day, The Doctor Job helps our clients get up to 30-40 or more interviews in markets that recruiters call "saturated". We can help you, too.

[www.TheDoctorJob.com](http://www.TheDoctorJob.com) 1.800.591.4842



## PANTHER ENTERPRISES

---

General Ambulatory Internists practices, phone call 1 in 7, Hospitalist programs in place. See 22-28 patients/day. Multiple locations in western Washington, Oregon, California. Very competitive compensation, full comprehensive benefits.

Contact Chris Warner, 206-782-1277, [panther@seanet.com](mailto:panther@seanet.com)

## PRIMED

---

Fairfield County Connecticut



**PriMed** a dynamic and fast growing multispecialty Physician's group in **Fairfield County Connecticut** is poised for additional expansion and recruiting for **Internal Medicine** physicians who wish to join our already existing practices.

We are located 1 hour from NY in a community which offers beautiful suburban areas with excellent school systems and great community and family living. We service St. Vincent's and/or Bridgeport Hospitals.

We also have full operational support so that you can focus immediately on your clinical practice. You credentialing, Medical Malpractice, IT needs as well as billing are taken care of immediately through our management office.

We offer competitive salary and full benefits, including Life, Medical, Dental, Vision, LTD, 401(k) and full partnership opportunities. \*We **do not** qualify to sponsor H1B visa applicants

**To apply please email your CV to [Human\\_ResourcesNE@med3000.com](mailto:Human_ResourcesNE@med3000.com) EOE.**

## ROCKWOOD CLINIC

---

Spokane, WA

Come enjoy the best of both worlds in the beautiful Inland Northwest.

Great opportunity to join this prominent physician owned and directed, primary care/multi-specialty group. The Rockwood Clinic seeks a board certified/eligible general internist to join our department of nine internists, providing outpatient and inpatient services. We anticipate no inpatient responsibilities once our hospitalist program is fully developed within the year. Come practice within this professional environment offering strong collegial support, favorable call schedule, teaching and research involvement, a comprehensive benefits package, and a competitive salary guarantee leading to early shareholder status and production based income.

Spokane is a progressive and vibrant community, host to regional arts organizations, excellent schools, five universities, and affordable housing in unique and friendly neighborhoods. We've got a mild four-season climate (260 days of sun on average) that is perfect for unlimited year-round recreational activities such as rounds of great golf that aren't outrageous in price, lift lines that actually move, and, best of all, really nice people!

**Contact: Colleen Mooney, 400 E. Fifth Ave., Spokane, WA 99202; 800-776-4048 • Fax: 509-835-1307; Email: [ckmooney@msn.com](mailto:ckmooney@msn.com); [www.rockwoodclinic.com](http://www.rockwoodclinic.com)**

## SELECT, INC. (SELECT PRACTICE OPPORTUNITY)

---

Bowling Green, KY

**We recruit all specialties, nationwide**

Dedicated, caring recruiters, intimate client relationships, and growing reputation for success make Select Practice Opportunity "America's Choice in Physician Placement Services." From understanding candidate preferences, to conducting thorough research for clients, Select scans the states to find the perfect match for physicians and hospitals alike.

**For more information, contact: Tim Leigh, President, P.O. Box 706, Bowling Green, KY 42102-0706, 877-499-9889, 877-855-0618 Fax, [tim@selectprofessional.com](mailto:tim@selectprofessional.com)**

## SETON HIGHLAND LAKES HOSPITAL & CLINICS

Burnet, Marble Falls & Horseshoe Bay, Texas



Board Certified or Board Eligible Internal Medicine Physician wanted for a busy clinic practice located in the Highland Lakes area of Texas. The clinic is affiliated with the Seton Highland Lakes Hospital, a member of the Seton Healthcare Network and Ascension Health, the largest not-for-profit health system in the United States. Practice will include both clinic and hospital work. This full time employed position offers generous benefits including malpractice coverage, medical and dental, retirement, vacation, CME time and life and disability insurance. You will also be given an annual allowance for professional dues and CME expenses. Compensation will be an attractive base salary and monthly incentive payments based on quality indicators and MGMA production benchmarks.

Located in the heart of the Central Texas Hill Country, The Highland Lakes Region is known for its natural beauty and is rich with history from Indians to Outlaws to the granite that was used in the construction of the Texas State Capital. With 1,800 square miles of lakes and hills the Highland Lakes Region is one of the largest playgrounds in Texas. Adventure, recreation, fun in the sun and hill country hospitality awaits you in the Highland Lakes communities that include Burnet, Marble Falls and Horseshoe Bay. There's plenty to do and see in the Highland Lakes area! From panoramic fields of bluebonnets and wildflowers, American Bald eagles soaring above Lake Buchanan to a shoot out in an old west town, a ride through the Hill Country on a steam train, or a relaxing tour through a vineyard, your days will be filled with lots of Texas fun!

Located approximately 1 hour from Austin and 1.5 hours from San Antonio, the Highland Lakes area is easily within reach of many cultural, entertainment, shopping and dining opportunities.

**For more information contact: Seton Highland Lakes, Scott Fuller, 512-715-3009, [sfuller@seton.org](mailto:sfuller@seton.org)**

## SHARP REES-STEALY MEDICAL GROUP

San Diego, CA

SHARP Rees-Stealy Medical Group, a 300+ physician multi-specialty group in San Diego, is seeking full-time BC/BE Internists to join our staff. We offer a first year competitive compensation guarantee, excellent benefits package, and shareholder opportunity after two years.

**Please send C.V. to SRSMG, Physician Services, 2001 Fourth Avenue, San Diego, CA 92101. FAX: 619-233-4730 or EMAIL Lori Miller: [lori.miller@sharp.com](mailto:lori.miller@sharp.com)**



## SIGMA MEDICAL GROUP

Lafayette, IN

Sigma Medical Group is a multi-specialty practice with seven office locations in Lafayette, IN. The physicians of Sigma Medical Group are closely affiliated with Greater Lafayette Health Services, which owns and operates St. Elizabeth Medical Center and Home Hospital. Greater Lafayette Health Services is in the process of building a state-of-the-art hospital with onsite medical office buildings to be completed by July 2009. At this time we are seeking an enthusiastic, motivated, BC/BE Hospitalist to join our Hospitalist team. Previous hospitalist experience is strongly preferred as our current team consists of experienced providers. Our current census numbers are less than twenty (20) routinely and we take no night admissions presently. Sigma Medical Group currently has four hospitalists covering two hospital campuses with a goal of providing seven-day a week service. To accomplish this, we are hiring at least two more hospitalists. Sigma Medical Group offers a competitive compensation and benefits package, including a 2-year salary guarantee, vacation, CME allowance, health insurance, malpractice, disability, retirement plan, support staff, and information technology equipment.

**If you would like more information about this opportunity at Sigma Medical Group, please contact Joyce Minick, Physician Practice Manager, at 765-449-5080 or [joyce.minick@ssfhs.org](mailto:joyce.minick@ssfhs.org).**

**ST JOSEPH'S HEALTH CENTER**

Syracuse, NY

UPSTATE NEW YORK Outstanding opportunity in beautiful Upstate New York for a BC/BE Internal Medicine primary care physician. Join three respected IM physicians in an out-patient setting with a single-hospital coverage group. Affiliated with a large acute-care hospital with active cardiovascular surgery, vascular surgery, orthopedic, premiere Hospitalist and dialysis programs, JCAHO accredited and Magnet designation for nursing excellence. FT, 1:7 weekend and night call. Ideal for position for achieving a work-life balance. Wonderful residential community with superb schools. Competitive salary and benefits including vacation, CME, malpractice, health, etc.

**For more information contact: Eileen Genett, RN, Physician Development, 301 Prospect Avenue, Syracuse, New York 31203; Eileen.genett@sjhsyr.org; Phone: 315-448-2783; Fax: 315-448-5873.**

**TANNER HEALTH SYSTEM**

Carrollton, GA



Tanner Health System, located 25 miles west of Atlanta, GA, is a 3 hospital not-for-profit healthcare system serving the western Georgia and eastern Alabama areas. As our region's premier healthcare leader, we have dedicated more than 50 years of service to our patients, medical staff, employees and the communities we serve. With more than 1,800 employees and capital expansions at all of our facilities, Tanner continues its tradition of innovation by ensuring that the residents we serve have access to the latest in medical technology. Tanner provides a wide range of comprehensive medical services including cancer care, rehabilitation, occupational health, home health and hospice. Tanner's maternity centers deliver more than 1,400 babies each year and approximately 6,000 surgeries are performed each year in Tanner facilities.

Current positions being recruited: General Internal Medicine, Hospitalist, Pulmonology. Gastroenterology, Interventional Cardiology

**For More Information Contact: Tanner Health System, Eric Johnston, Physician Recruiter, 770-838-8729-office, 770-838-8713-fax, ejohnston@tanner.org, Shellie Sherrrod, Director-Physician Development, 770-836-9217-office, 770-838.8563-fax, ssherrod@tanner.org, 705 Dixie St. Carrollton, GA 30117, www.tanner.org**

**THE PORTLAND CLINIC**

Oregon

**PARTNERSHIP OPPORTUNITY IN THE BEAUTIFUL PACIFIC NORTHWEST**

The Portland Clinic is an independent, full-service medical clinic with over 60 physicians, and we have been treating generations of families for 85 years. We are the oldest multi-specialty medical group in the State of Oregon and enjoy an excellent reputation throughout the Northwest as a premier, quality, and financially stable medical group. Owned and operated by physicians, the Clinic, with its 4 offices strategically located in the growth areas of Portland, holds a dominant position in the local healthcare community. Surrounded by beauty, Portland is conveniently located just over an hour from wide sandy beaches in one direction, and the majestic Columbia River Gorge and world-class skiing in the other direction. Citizens of the greater Portland area are known to be friendly, active, and health-conscious, and there are many opportunities to enjoy both outdoor activities and other fine cultural amenities. Our physicians are a youthful, high quality, enthusiastic group that enjoy their work and each other. We are seeking BC/BE physicians to join us as we continue to grow our practice.

**Don't hesitate to get in contact with us. We would love to speak with you about what the future might hold! Please contact Jan Reid, Recruitment, 503-221-0161 x2112, jreid@tpcllp.com**

**TRI-STATE COMMUNITY HEALTH CENTER**

Southcentral Pennsylvania

Tri-State Community Health Center, a growing multi-site Federally Qualified Health Center, is looking for full-time FP/IM Physicians. New facility opened in April 2006 in beautiful Southcentral Pennsylvania. Country living with the advantage of 1 to 2 hour drive to major metropolitan areas. Competitive salary and full benefits package.

**Send CV to: Attn: Sheila DeShong, 130 West High Street, Hancock, MD 21750, sdeshong@tschc.com. Excellent opportunity!**

## UNITED MEDICAL ASSOCIATES, P.C.

Binghamton, NY

### Hospitalist Opportunity

At United Health Services Hospitals (UHSH), a 500-bed teaching hospital located in Binghamton, NY, we are committed to providing our patients with the highest quality medical care. We are equally concerned about the success of the physicians who work here. We believe that ensuring our physicians professional satisfaction is critically important to the delivery of effective bedside care. One example of what we do for all our new physicians is provide a mentor so on day one you have a built in supportive resource available.

Currently United Medical Associates, P.C. (UMA) is seeking Board Certified Internists to work with our Hospitalists. Our Hospitalist team is a group of people who truly enjoy working together. The schedule takes advantage of time proven work schedules that allow a comfortable balance between delivery of patient care and time off. Our salary and benefits package are very competitive, as demonstrated by our very low turnover in physicians.

If you want a career opportunity wrapped in a truly "Doctor Friendly" environment that is committed to your success, then UHSH is the only choice for you.

**Contact Mary Gibson, Director of Physician Services at (800) 295-1788; Fax (607) 763-6717; email: [mary\\_gibson@uhs.org](mailto:mary_gibson@uhs.org). Not a visa opportunity.**

## UNITED MEDICAL ASSOCIATES

Endwell, NY

**United** Health Services

United Medical  
Associates

United Medical Associates (UMA), with 130+ physicians providing care in more than 20 medical and surgical specialties, is currently seeking a BE/BC Internist to join our group. This position is located in Endwell, NY with three other internists and one Pulmonary Medicine physician. This position includes both inpatient and outpatient responsibilities. The successful candidate will possess excellent clinical and interpersonal skills and be team players.

UMA is an affiliate of a large, not-for-profit integrated health care system. Our physicians have the opportunity to teach Internal Medicine and Family Practice residents, as well as third and fourth year medical students. An academic appointment at the Upstate Medical University at Syracuse, as well as the ability to participate in basic and clinical research also exists.

High quality and academically excellent public and parochial schools are in the community. Home to Binghamton University, we are located three hours from NYC and Philadelphia, and only an hour drive to Syracuse University and Cornell University. Our area provides recreational opportunities for all four seasons and cultural activities include symphony, opera and a center for performing arts.

A competitive salary guarantee plus an opportunity for a productivity incentive, malpractice insurance, as well as an extremely attractive and comprehensive benefit program, will also be provided.

**Contact Mary Gibson: phone (800) 295-1788, fax (607) 763-6717, email [mary\\_gibson@uhs.org](mailto:mary_gibson@uhs.org) Not a visa opportunity.**

## UNITED MEDICAL CENTERS

Del Rio, TX

INTERNIST - BE/BC in Del Rio, Texas - Competitive salary - Base Pay and Productivity Incentives. PLUS FRINGE BENEFITS: Malpractice (FTCA), CME (Time off & stipend); 11 days holidays/Year; Health, Dental & Life Insurance; 13 Sick Leave/Year; Tax Sheltered Annuity. United Medical Centers is a Community Health Center in southwest Texas along the US/Mexico border with 7 different Clinic sites serving Eagle Pass, Del Rio and Brackettville, Texas.

Del Rio, a thriving city, offers excellent schools, affordable housing, mild weather, the oldest operating winery in the state, great fishing, boating, diving or wind surfing at Lake Amistad, unique shops and varied eating places, yet is within a few hours drive from all San Antonio has to offer.

**Contact George Kypuros by email: [gkypuros.umc@tachc.org](mailto:gkypuros.umc@tachc.org)**

## VALLEY BAPTIST MEDICAL CENTER

Brownsville, Texas



### EASY TO FIND....HARD TO LEAVE!!

**Valley Baptist Health System is the Valley's leader in excellence in healthcare and community service! Internal Medicine Opportunity in South Texas!**

Valley Baptist Health System, a premier community health system, has identified a community need for a BC/BE Internal Medicine physician in Brownsville, Texas and join the medical staff of Valley Baptist Medical Center – Brownsville! As a level III trauma center, this facility has over 80 years of tradition in caring for the community!

This opportunity offers an employed position with a generous relocation package for the IM physician. The position will be amply rewarded with a competitive salary/benefit package. The lifestyle benefits of this new practice are considerable-enjoy a manageable workload and schedule; and live in a wonderful, scenic, cultural place like no where else!

The Rio Grande Valley, one of the fastest growing areas in Texas offers a unique quality of family oriented living, semi-tropical climate, sandy beaches, low cost of living with no state income tax and a host of cultural opportunities! Once you visit, we're sure you'll agree that this is one of the best places in the U.S. to call home!

We're one of the best kept secrets in the nation! Come see why!

**For more information contact: Susan Kutac – Physician Recruiter, Valley Baptist Medical Center-Harlingen, Phone: 800-471-9743 or 956-389-6740, Fax 956-389-6746, Email: susan.kutac@valleybaptist.net, Website: www.valleybaptist.net**

## WEATHERBY LOCUMS



**At Weatherby Locums, we'll put you to work after residency...**and deliver the freedom, flexibility and choices you've only dreamed about for your Internal Medicine career!

Weatherby Locums offers you an exciting way to practice medicine. Locum tenens, or temporary assignments, allow you to work in Internal Medicine and:

- **Experience different work environments *before* making a long term commitment**
- **Broaden your experience and add to your resume**
- **Travel and discover new parts of the country**
- **Be free of administrative responsibilities**

Weatherby Locums can help you meet your career goals by offering outstanding travel assignments, top pay and a comprehensive malpractice policy. We provide paid travel, local transportation and private housing, and can assist you with the licensing process—it's all at no cost to you!!

**Contact us now to start the application process.** Whether it is a Hospitalist job or general Internal Medicine opportunity desired, your personal consultant will customize a plan for you that's ready the moment you graduate.

**We'll put you to work. Call today! 866.244.3196, New Internal Medicine jobs listed daily at [www.weatherbylocums.com](http://www.weatherbylocums.com).**

## YAKIMA VALLEY FARM WORKERS CLINIC

Toppenish, WA

### Northwest IM/PEDS Opportunity

We are a 20 provider, primary care group (IM, Peds, Med/Peds (1), Ob/Gyn and FP) delivering comprehensive care to Hispanic farm workers of the lower Yakima Valley in Toppenish, WA. We are close to the beautiful Cascade Mts. and Columbia River Gorge. We have a clinic with Dental, Lab and X-ray. Our 30 bed community hospital is 2 blocks away. We are recruiting an Internal Medicine/Pediatric physician to work with 3 other FPs and 4 mid-level providers in our Family Medicine dept. Work responsibilities include pediatric and adult call and hospital care, occasional evenings and Saturdays in clinic. Hospital call would involve participation in a call rotation with 4 internists and 4 pediatricians who are part of the clinic staff. We emphasize teamwork and share the workload equally. We have an excellent clinic administrator. Loan repayment may be available. Some of us have been with this community health center for over 30 years. We are committed to delivering care to an under served community of Hispanic farm workers and their families as well as the local farming community.

**If the prospect of joining this team excites you, contact us at: YVFWC, HR Department, P.O. Box 190, Toppenish, WA 98948, or phone: (509) 865-6175, ext. 2284, fax (509) 865-2891, email: [markr@yvfwc.org](mailto:markr@yvfwc.org) or visit our web site: [www.yvfwc.com](http://www.yvfwc.com)**

# SMILE more



When you join Kaiser Permanente Southern California, you'll have a lot more reasons to smile. That's because we'll be taking care of your administrative concerns (smile)...and offering you a balanced call and work schedule (big smile)...which means you can enjoy all that sunny California has to offer (even bigger smile). Most importantly, we'll give you the support, resources and autonomy you need to give your patients the exceptional care they deserve (the biggest smile of all).

## INTERNAL MEDICINE AND HOSPITALIST OPPORTUNITIES

Openings in the Greater Los Angeles area, Inland Empire, Kern County, Orange County and San Fernando Valley

Cross-specialty collaboration and a comprehensive network of support are just a few of the advantages that make working with us so enjoyable. We also offer a highly competitive compensation and benefits package plus a location that's known the world over for its amazing climate and natural attractions.

For Kern County opportunities, please email your CV to: Joan.X.Little@kp.org or call: (661) 864-3320. For all other locations, please email your CV to: Patty.A.Darling@kp.org or call: (800) 541-7946. We are an AAP/EE0 employer. <http://physiciancareers.kp.org>.

**KAISER PERMANENTE® thrive**  
Southern California Permanente Medical Group

When it matters most.

## Think St. Johns



- Traditional internal medicine practice providing outpatient care.
- 367-bed regional tertiary medical center with Level II trauma, med flight services, and 36-critical care beds.
- Hospitalists program in place.
- Excellent subspecialty support readily available to assist you.
- Foundation to build a busy practice quickly in a thriving medical community.
- Strong total service area of 700,000+ with growth potential (primary service area 220,000).

### *Southwest Missouri ~ Excellent Quality of Life*

- Family-oriented community with big-city amenities.
- One of the lowest cost of living metro areas in the United States (around 14-15% below national average).
- Public, private, parochial & 4-year college and local university schooling options..
- Regional hub for 4-state area for employment, retail/shopping, and entertainment.

CATHOLIC HEALTH  
INITIATIVES

**St. John's  
Regional Medical Center**

Joplin, Missouri

**Inquires Contact  
Alyssa Hodkin  
800-638-7021**

**417-659-6343 (fax)  
ahodkin@stj.com**

[www.docopportunity.com](http://www.docopportunity.com)

## Hospital Medicine Opportunity in Georgia

### EMERGENCY COVERAGE CORPORATION OF **TEAMHealth**

is seeking a hospitalist for an opportunity at  
**Hamilton Medical Center in Dalton, Georgia.**  
Physician candidates must be **BC/BE in IM.**  
The 282-bed facility has been twice named one of the  
Top 100 Hospitals in the United States  
by HCIA and Mercer Consulting.

In Dalton you can escape the chaos of a big city  
and enjoy numerous outdoor activities. A historic  
downtown offers specialty shops and  
quaint restaurants interspersed with  
historic monuments and parks.

Contact: **Leslie Teeple**  
**800.577.7707, Ext. 7214**  
**865.693.4064 (fax)**  
**leslie\_teeple@teamhealth.com**

[www.teamhealth.com](http://www.teamhealth.com)



Go jump in a lake.

Get ready to make a splash with CHW Medical Foundation in Northern California. Join us to experience a breadth of professional opportunities, as well as enjoy living in the scenic Sacramento, Stockton or San Francisco Peninsula areas. Ready to dive in?

### **Sacramento - Mercy Medical Group** [www.mercymedicalgroup.org](http://www.mercymedicalgroup.org)

#### **Internists**

Our large, multi-specialty practice offers excellent outpatient-focused, partnership-track internal medicine positions with easy access to qualified specialists.

#### **Hospitalists**

Our well-established Hospitalist program of more than 20 providers is looking to add 5-7 partnership-track Hospitalists. We currently serve 2 major hospitals in the area and will soon be expanding into a third.

**For more information, please contact and/or send CV to Arlene Wong,**  
**Physician Recruiter: [arlene.wong@chw.edu](mailto:arlene.wong@chw.edu). P: (916) 733-5774. F: (916) 859-1612.**

### **Stockton - St. Joseph's Medical Group of Stockton** [www.stjosephsmedgroup.org](http://www.stjosephsmedgroup.org)

#### **Internists**

Our start-up group practice is ideal for an entrepreneurial Physician who is looking to work primarily with outpatients, including University students.

#### **Hospitalists**

Our Hospitalists will work with Primary Care Providers and specialists in the community to help develop and grow an excellent, high quality Hospitalist program. This exciting new program will serve St. Joseph's Medical Center.

**For more information, please contact and/or send CV to Caitlin Cartwright, Manager,**  
**Physician Recruitment & Retention: [caitlin.cartwright@chw.edu](mailto:caitlin.cartwright@chw.edu). P: 916-733-5758. F: 916-733-5760.**

### **San Francisco Peninsula - Sequoia Primary Care Group** [www.spcgdocs.org](http://www.spcgdocs.org)

#### **Internists**

As a member of our expanding group of primary care providers, you'll be working in a new office that offers access to an excellent patient mix, as well as a wide variety of medical specialists. Call for these positions is 1:6-1:8 and is by phone only; Hospitalists make all admissions.

**For more information, please contact and/or send CV to Arlene Wong,**  
**Physician Recruiter: [arlene.wong@chw.edu](mailto:arlene.wong@chw.edu). P: (916) 733-5774. F: (916) 859-1612.**

Our locations offer outstanding schools, great cultural and recreational options, and easy access to Lake Tahoe, the beautiful wine country and Yosemite. Affiliated with CHW, we provide an excellent compensation package and a full array of benefits, including guaranteed income, bonus potential and a very desirable retirement plan.

Not a J1 opportunity.



CHW Medical Foundation  
CHW

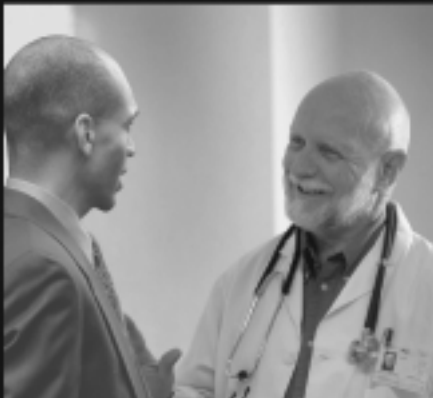
Just Published...

# The Physician's Survival Guide for the Hospital

by Samuel H. Steinberg, Ph.D.

A workplace guide for medical students, residents, fellows, and all physicians who want to enhance their understanding of the hospital.

**Let the Hospital Work for You**



Let the Hospital Work for You  
**The Physician's Survival Guide  
for the Hospital**

Samuel H. Steinberg, Ph.D.

With a foreword by David J. Shulkin, MD  
President and CEO of the Beth Israel Health System, New York

Available for \$11.95 at Amazon.com,  
BarnesandNoble.com, and iUniverse.com.

Visit [www.physiciansurvivalguide.com](http://www.physiciansurvivalguide.com)



*Make a Healthy  
Community...  
One Patient at a Time.*

The Yakima Valley Farm Workers Clinic is looking for physicians who are interested in providing primary health care in a multicultural environment and who want to make a difference in the lives of others.

- We provide comprehensive health care services to over 20 community health centers in Washington and Oregon and are dedicated to providing our patients with the highest quality care and affordable health care options.
- We support our providers with a multi-disciplinary team approach and a strong support system.
- With facilities in both urban and rural areas of the beautiful Pacific Northwest there are communities to suit a variety of lifestyles.
- We offer competitive pay with a signing bonus. A comprehensive benefits package and relocation expenses are also included.

**If this opportunity interests you  
contact us at 877-983-9247 or  
[providerjobs@yvfwc.org](mailto:providerjobs@yvfwc.org)**



**Yakima Valley  
Farm Workers Clinic**

*Committed to quality care for your family.*



# CareerMD.com Career Fairs

2007

## Residents, Fellows, and Physicians: You are Invited!

### About CareerMD.com Career Fairs

Residents, fellows, and physicians **in all specialties** are invited to attend upcoming CareerMD.com Career Fairs in cities across the country. Meet potential employers face-to-face and learn about career opportunities. Even if you are only in your first or second year of training, employers want to meet you now!

Employers will be coming from all parts of the country to attend upcoming CareerMD.com Career Fairs in the following cities:

**New York City, NY**

**Detroit, MI**

**Los Angeles, CA**

**Durham, NC**

**St. Louis, MO**

**Washington, DC**

**Atlanta, GA**

**Dallas, TX**

**Milwaukee, WI**

**Seattle, WA**

**Cleveland, OH**

**Indianapolis, IN**

**Miami, FL**

**Cincinnati, OH**

**San Francisco, CA**

**Boston, MA**

**Chicago, IL**

**Houston, TX**

**Philadelphia, PA**

**And more...**

### Register to Attend

Residents, fellows & physicians who wish to attend any of these events should **RSVP** by phone (800) 355-2626 or email: CareerFairs2@CareerMD.com

There is **no cost** for job-seeking residents, fellows & physicians to attend

### Unable to attend, but interested in learning more?

If you are unable to attend a CareerMD.com Career Fair but would like to have your CV circulated among participating employers, you may send it via email to: CareerFairs2@CareerMD.com

### Register to Exhibit

#### Employers & Recruiters:

Register to exhibit at upcoming CareerMD.com Career Fairs while space is still available! For more information, contact Charles Howell by phone at (800) 355-2626 or by email: CHowell@CareerMD.com

Visit [www.CareerMD.com/careerfairs.shtm](http://www.CareerMD.com/careerfairs.shtm) for information about dates, locations, and additional cities we will be visiting in 2007

### Feedback from Attendees at Past CareerMD.com Career Fairs

*"I am glad to have been part of the career fair in New York. It was a great venue for me to get in contact with future opportunities. I think it was a well-organized and well-planned event."*

*"As a first-year fellow who did not actively seek opportunities outside academia during residency, this event was an excellent way to meet with individuals in the community and introduce myself more to the possibility of practice outside of the university setting. I thought it was a good size event (not too many or too few people to talk with), and that the individuals I met with were quite knowledgeable about the situation in their community (even beyond their own institutions)."*

*"The Career Fair was very helpful in my search for an Addiction Psychiatry position. I was able to network, get tips on geographical locations and current hospitals of interest."*

*"The Career Fair was an excellent gathering for Residents and Fellows. Specifically, it provided an opportunity to meet with numerous prospective employers under one roof and a chance to have our CV's distributed to so many places at the same time. I hope you will make it an annual event in the future."*

*"Just wanted to thank you for the great job fair that you and CareerMD.com organized here in Boston. I found excellent opportunities and information from all the employers. Thanks a lot!"*

*"Thanks for organizing the career fair. I enjoyed it and I got to meet a lot of prospective employers - I have contacted two since that time. Space was well-distributed, and I also appreciate that you sent out a list of which hospitals were looking for which spots, so I could read in advance and focus my search."*

*"Thank you for the invitation to the excellently planned and well-run recruitment fair. The experience was more than I had ever expected. I spent a lot of time with the recruiters in Family Practice and I was able to establish a network and introduce myself to these people. I also met many folks of Hospitalists groups and mingled with them also."*

### About CareerMD.com



CareerMD.com is a career-planning website for medical students, residents, fellows and physicians offering free access to information about training and employment opportunities all over the country. CareerMD.com publishes the CAREER INSIGHTS Guides and free monthly electronic newsletters for job-seeking residents, fellows, and physicians. Visit the CareerMD.com website to learn more about how to locate employment and training opportunities online.



*Dedicated to Exceptional Medicine  
and Compassionate Care*

## **PACIFIC NORTHWEST**

### **Internal Medicine and Hospitalist opportunities at PeaceHealth**

PeaceHealth is a nationally recognized, not-for-profit healthcare system dedicated to Exceptional Medicine and Compassionate Care. As a team player you will have multiple electronic resources available, including system-wide EMR and an all-digital imaging department.

**IM-Eugene:** In Eugene, Oregon, we employ over 4,000, including 120 multi-specialty physicians. You'll be part of a collegial team of 11 Internal Medicine physicians. This outpatient position enjoys limited call. We are seeking a BC/BE Internal Medicine provider. Spanish speaking preferred. No J1's.

**IM-Cottage Grove:** This Critical Access Hospital and Provider-Based Rural Health Clinic is made up of FM, IM and Pediatric providers including NP's. This outpatient position enjoys limited call. Seeking a BE/BC Internal Medicine Provider with solid clinical skills.

**Hopitalist:** Sacred Heart Medical Center in Eugene, Oregon, a 432 bed level 2 trauma center which has been recognized as one of the nation's top 100 Cardiovascular Hospitals. We have block scheduling (typically 7 on/7 off), cash comp. of \$1,071 per shift (minimum cash comp. for 160 shifts=\$171,360). Scheduling model allows for ample opportunity to enjoy the many attractions of our Pacific Northwest location. No J1's.

PeaceHealth offers competitive guarantee/salary, benefits, full malpractice coverage and relocation assistance in one of the most desirable university communities in the nation. We also offer educational loan reimbursement and resident/fellow stipends. Must be BC/BE.

Eugene/Springfield is a community of 200,000 that has all the cultural amenities associated with being home to a major university, boasts pristine rivers, forests and snow-covered peaks, and the rugged Oregon coast is only an hour away.

E-mail CV to Trish Litton at [tlitton@peacehealth.org](mailto:tlitton@peacehealth.org). Fax CV to 541/434-3198, or call 541/687-6219. Visit our website at [www.peacehealth.org](http://www.peacehealth.org)



I believe in getting more out of life.

**MID-ATLANTIC PERMANENTE MEDICAL GROUP**

Get more out of life, Kaiser Permanente can help. At Kaiser Permanente, we encourage our physicians to thrive in both personal and professional ambitions. To assist our physicians in caring for both patients and their loved ones, we offer a competitive salary, professional liability coverage, exceptional health-care benefits, bonuses based on group performance and an excellent call schedule.

As an entity operating under the Kaiser Permanente umbrella, the **Mid-Atlantic Permanente Medical Group (MAPMG)** is a physician-owned and managed multi-specialty group that is currently seeking board-certified or board-eligible Internists to practice quality care throughout the Mid-Atlantic region.

To apply for our physician opportunities, please submit your CV to: Kelly.L.Vrana@KP.org or log onto our website at: <http://physiciancareers.kp.org> and select **Mid-Atlantic**.



EOE

**Imperial Beach Health Center**

949 Palm Ave Imperial Beach CA 91933 (619) 429-3733 Fax (619) 429-6457



**Join our Team.**

Since Imperial Beach Health Center first opened its doors in 1971, our mission has been to provide high quality medical care for all members of our community. As a community focused health center we are committed to being responsive to the health care needs of our area.

We invite you to join our team and be part of our success. Each employee is hired to make significant contributions to our center. We offer a pleasant working environment while making a gratifying contribution to the community.

We are looking Family Practice and Internist Physicians. After-hours telephone triage 1-2 weeks per month and optional hospital coverage. Paid malpractice insurance is provided.

**Company Paid Employee Benefits**

- Health
- Dental
- Life
- Paid malpractice insurance
- Paid Holidays, Sick and Vacation Time

**For immediate consideration please contact:**

Imperial Beach Health Center  
 Attention: Eric Leute, MD, Medical Director  
 949 Palm Ave, Imperial Beach CA 91933  
 (619) 429-3823 Fax, [eleute@ibclinic.org](mailto:eleute@ibclinic.org)

**Human Resources Department**

Jorge Gutierrez – Director  
 (619) 628-5564 [ibhr@ibclinic.org](mailto:ibhr@ibclinic.org)

Visit our website at  
[www.ShermanHealth.com](http://www.ShermanHealth.com)

# Achieving Balance

*in your life isn't always easy.*

Physicians at Sherman Health enjoy balancing work with free time. You go to great lengths to take care of your patients. Now, take care of yourself.

- Enjoy miles of bike trails, parks and riverfront activities
- Located within 45 minutes of the city—enjoy all that downtown Chicago has to offer!
- Join our new environmentally friendly and intelligently designed hospital—just minutes from your office
- Several **Internal Medicine** opportunities to join an existing practice or build your own practice with financial support

Take the first step today by giving us a call at **847-429-5428**.

**Sherman Health**  
*always leading the way*