

# CAREER INSIGHTS FM

THE CAREER PLANNING GUIDE FOR FAMILY MEDICINE RESIDENTS

WINTER 2006/SPRING 2007

## EMPLOYER PROFILES

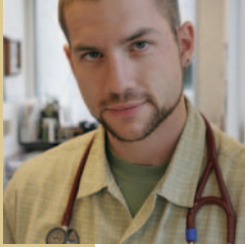
Information on Featured Physician Employers  
and Current Vacancies



The Print Companion to the [CareerMD.com](http://CareerMD.com) Website

# Imagine...

## Quality of medicine. Quality of life.



Our state-of-the-art health care facilities and nationally acclaimed programs and services not only allow you to fulfill your potential as a physician, but also give your patients access to the best care around.

**Providence Health & Services** has **family medicine** physician opportunities in locations that will inspire you. The choice is yours; hospital, clinic and immediate care settings available.



**Alaska • California • Montana • Oregon • Washington**

[www.providence.org/physicianopportunities](http://www.providence.org/physicianopportunities)

Please send CV/references to [judy.brant@providence.org](mailto:judy.brant@providence.org).  
For more information, please call toll-free 1-866-504-8178  
or visit us on the Web.

**Providence Health & Services**  
Providence Health System  
Providence Services  
Little Company of Mary

## Come Join Our Family Medicine Physicians At PeaceHealth

### Cottage Grove, Oregon

A beautiful state-of-the-art 14-bed critical Access Hospital located in a well-supported rural community setting just 20 miles south of Eugene.

Contact Trish Litton at: 541/687-6219  
or email [tlitton@peacehealth.org](mailto:tlitton@peacehealth.org)

### Longview/Kelso, Washington

Lovely family community located on the Columbia River. We are an hour from the coast, an hour from snow skiing, and 40 miles from Portland.

Contact: Carol Shea at: 360/414-7867  
or email [cshea@peacehealth.org](mailto:cshea@peacehealth.org)

### Florence, Oregon

Community Hospital where the dunes meet the rugged Oregon coast. Florence is Oregon's playground with large ocean beaches and towering cliff sides.

Contact: Cindy Crossley at:  
541/902-1677 or  
email [ccrossley@peacehealth.org](mailto:ccrossley@peacehealth.org)

### Eugene, Oregon

Raft and fish our rivers, ski our mountains, and take a long walk on our beaches. We want you to join our innovative 120 physician multi-specialty group.

Contact: Mark Rearrick at:  
541/687-6243 or  
email [mrearrick@peacehealth.org](mailto:mrearrick@peacehealth.org)



For more information, visit  
[www.PeaceHealth.org](http://www.PeaceHealth.org)

PeaceHealth is guided by the value of an order of progressive religious women—the Sisters of St. Joseph of Peace. Under their leadership, we've become nationally recognized for both technical excellence and compassionate care. If you are looking for a career that engages your mind as well as your heart, we encourage you to apply at PeaceHealth.

PeaceHealth offers excellent salaries, full malpractice coverage, relocation assistance, competitive retirement, great benefits and some locations offer educational loan reimbursement and intern stipends.



PeaceHealth is an EEO and Affirmative Action Employer

# CAREER INSIGHTS FM

## THE CAREER PLANNING GUIDE FOR FAMILY MEDICINE RESIDENTS

### EMPLOYER PROFILES

|   |                        |
|---|------------------------|
| American Healthcare Recruiting                              | 2                      |
| Aspirus Clinics   | 2                      |
| Aurora Health Care  | 2                      |
| Bay Regional Medical Center and Primary Care Practice       | 3                      |
| Baystate Health   | 20                     |
| Bryan LGH   | 3                      |
| Primary Health Physicians, P.A. (CareNow)                   | 3                      |
| Carillion Health System                                     | 4                      |
| Central California Faculty Medical Group                    | 4                      |
| Central Maine Medical Center                                | 5                      |
| Central Maine Medical Center (Levison/Auburn)               | 5                      |
| Door County Memorial Hospital                               | 5                      |
| Eastern Maine Healthcare                                    | Inside Back Cover      |
| Emergency Service Partners                                  | 6                      |
| Exeter Health Resources                                     | Outside Back Cover     |
| Franciscan Medical Group                                    | Outside Back Cover     |
| Freeman Health System                                       | 6                      |
| Great Brook Valley Health Center, Inc.                      | 6                      |
| Gundersen Lutheran Health System                            | 7                      |
| Illinois Primary Health Care Associates                     | 7                      |
| Kaiser Permanente - Northern California                     | Masthead               |
| Lifelong Medical Care                                       | 7                      |
| MaineGeneral Health   | 8                      |
| Marquette General Health System                             | 8                      |
| Marshfield Clinic   | 9                      |
| Mayo Health System  | 9                      |
| Mercy Medical Center - Des Moines                           | 8                      |
| Mercy Health Network - North Iowa                           | 10                     |
| MidMichigan Medical Center-Midland                          | Inside Back Cover      |
| National Rural Recruitment & Retention Network              | 10                     |
| North Country Community Health Center                       | 10                     |
| Northeast Community Clinic                                  | 11                     |
| Ohio Association of Community Health Centers                | 11                     |
| Oregon Medical Group  | 11                     |
| Parma Community General Hospital                            | 19                     |
| PeaceHealth Medical Group                                   | Inside Front Cover     |
| Providence Health & Services                                | Inside Front Cover     |
| Renown Health   | 12                     |
| Saint Alphonsus Regional Medical Center                     | 19                     |
| Salem Clinic P.C.   | 12                     |
| Scotland Health Care System                                 | 19                     |
| Select Inc.   | 12                     |
| Seton Highland lakes Hospital                               | 13                     |
| Solantic LLC  | 13                     |
| Southwest Medical Associates                                | 14                     |
| St. Joseph Healthcare                                       | 14                     |
| St. Mary's Family Practice Clinic                           | 15                     |
| St. Mary's Regional Medical Center                          | 15                     |
| Tanner Health System  | 15                     |
| The Doctor Job  | 19                     |
| The Portland Clinic   | 16                     |
| Tri-State Community Health Center                           | 16                     |
| United Medical Centers (TX Assoc. Community Health Centers) | 16                     |
| Valley Baptist Medical Center                               | 17                     |
| Vertex Staffing LLC   | 17                     |
| Virginia Primary Care Association                           | 17                     |
| VISTA Staffing Solutions                                    | Inside Back Cover      |
| Witt Mares Career Solutions                                 | 18                     |
| Yakima Valley Farm Workers Clinic                           | 18, Outside Back Cover |



## Achieve balance

Isn't it time you enjoy a more balanced life? The Permanente Medical Group knows that healthy physicians provide better health care. That's why we encourage our physicians to take time for their personal lives—so they can better appreciate their professional careers. We believe this thing called 'work-life balance' means more than having a few weeks of vacation to recharge. It's having the time to breathe, to eat breakfast and dinner at home, and to appreciate the diversity of life around you. Here you'll have the support, and the time, to do whatever makes you, you. At TPMG, you won't just look after the well-being of others, you'll have someone looking after the well-being of you. Bring your practice to us.

### THE PERMANENTE MEDICAL GROUP DELIVERS:

- An environment and culture that encourage and support physicians dedicated to patient care as well as research and teaching
- Competitive, dependable salary
- Outstanding benefits in addition to the base salary
- Eligibility for an annual incentive bonus as a Senior Physician/ Shareholder
- Reimbursement for relocation expenses
- Home Loan Program
- Physician Mentoring Program

Please contact us for more information.

Physician Recruitment Services  
1800 Harrison Street, 7th Floor  
Oakland, CA 94612  
**Toll-Free: (800) 777-4912**  
**Phone: (510) 625-4949**  
**Fax: (510) 625-5487**

The Permanente Medical Group, Inc.

<http://physiciancareers.kp.org>

KAISER PERMANENTE  thrive

## AMERICAN HEALTHCARE RECRUITING

Nation Wide

National Retail opportunities for Family Practice and Internal Medicine

Excellent Innovative opportunity for Family Medicine Physicians/Internal Medicine Physicians (must be willing to see 2 yrs old and up) to enjoy a new career in Retail Medicine. Major metro areas as well as suburban areas will set up clinics right inside large retail centers. The clinics will treat patients from infants to geriatrics.

The benefit package and pay rate will be very competitive. 120 to 140 per year, profit sharing, standard health and 401K, CMEs, MPI, Vacation negotiable.

Full time, Part time, and Locum opportunities are available. They will accept BC, BE, DO, and General Medicine.

This is a nation wide opportunity with locations opening throughout the U.S.

**Please contact John Frey with American Healthcare Recruiting at 949-218-5297 [johnfrey@ahcr.net](mailto:johnfrey@ahcr.net)**

## ASPIRUS CLINICS

Wisconsin



Opportunities in Wisconsin!

Aspirus Clinics is currently seeking BC/BE family physicians to join our clinics. Our physicians enjoy an excellent retirement plan, along with a competitive salary. 4 seasons of family fun await you! Hunting, fishing, golf, and skiing—we have all of that and more!

Positions are available in the following cities:

Antigo (OB + C-Section)

Lac du Flambeau (HPSA area, OB optional)

Medford (OB optional)

Rib Lake (OB optional)

Weston

Wisconsin Rapids

**Please call Jamie Sitko; Aspirus Clinics Physician Recruitment at 800-792-8728 and check out our web site at [www.aspirus.org](http://www.aspirus.org) for more information.**

## AURORA HEALTH CARE

Wisconsin

Aurora Health Care is the largest not-for-profit health care system located in Wisconsin and present in over 100 Wisconsin communities. We currently have 14 hospitals, more than 100 clinics and pharmacies, and provide a wide variety of services including home care, behavioral health, and long-term care. Aurora also provides paid occurrence-based medical liability insurance and a comprehensive benefit package. We are currently highlighting the following exceptional opportunities:

Fond du Lac, WI: Our outstanding multi-specialty clinic in beautiful, fast-growing Fox River Valley seeks new or experienced family practitioner to provide full scope of family medicine. This 22 physician group includes experienced clinic support staff, on-site, state-of-the-art technology and innovative patient education and monitoring services.

Lake Geneva, WI: Take over a successful practice from a retiring physician and join a team of six Family Practitioners in the internationally renowned resort area, located 85 miles northwest of Chicago and 45 miles southwest of Milwaukee. A state-of-the-art facility and experienced staff provide a supportive work environment in an idyllic setting.

Washington County, WI: Single and multi-specialty practice opportunities available for either a new or experienced family practitioner to provide medical services in an area popular with families because of its fine schools and wealth of civic amenities. Excellent opportunity to provide a full range of family medicine in conjunction with experienced care physicians, specialists, and a full-service hospital.

**For more information contact: Aurora Health Care, Physician Recruitment, 800-307-7497, [physician.recruitment@aurora.org](mailto:physician.recruitment@aurora.org)**

Equal Opportunity Employer M/F/D/V. We support a safe, healthy, and drug-free work environment through criminal background checks and pre-employment drug testing. We value the power of diversity.

## BAY REGIONAL MEDICAL CENTER AND PRIMARY CARE PRACTICE

West Branch, MI



- Full time opportunity employed with primary care (owned by Bay Regional Medical Center)
  - Out patient and in patient – will be on medical staff at West Branch Regional Medical Center
  - Primary care has 10 clinics located in the following areas: Fairview, Mio, Rose City, Hale, Houghton Lake, St. Helen, West Branch, (3 clinics) and Skidway Lake (Northeastern Michigan)
  - Primary care employs 10 physicians and 10 mid-level providers
  - Employment first year at \$150,000 – then productivity based
  - Full benefits including health insurance, life insurance, 3 weeks paid vacation plus 1 week of CME with \$3,500 per year stipend, retirement, etc
  - National health care services area and health professional shortage are – loan repayment available
  - Call – during the week – 1 day – usually the same day every week, weekends 1:5 or 1:6
  - West Brance Regional Medical Center is an 88 bed acute care facility that has 4 operating suited, a coronary/intensive care unit, OB and a 24 hour emergency department
  - Ogemaw County population is 23,000
- Contact Konnie Licavoli, [Konnie.Licavoli@bhsnet.org](mailto:Konnie.Licavoli@bhsnet.org), (800) 223-4242**

## BRYAN LGH

Nebraska

Various rural opportunities throughout the state of Nebraska for Family Practice Physicians wishing to practice the full scope of family medicine, including OB. Competitive compensation packages provided, plus potential for loan repayment assistance. Come to Nebraska, where the possibilities are endless, and where the land and its people are both open and inviting.

**Please contact: Brenda McGinn, CMSR or Steve Steinkuehler, CMSR, 800-563-8289 [physician-opportunities@bryanlgh.org](mailto:physician-opportunities@bryanlgh.org)**

## PRIMARY HEALTH PHYSICIANS, P.A (CARENOW)

Dallas-Fort Worth, TX



Primary Health Physicians, P.A, practicing at CareNow has part and full time openings throughout the Dallas-Fort Worth area. We offer a \$7,500 sign on bonus for full time. We have excellent moonlighting opportunities for residents that can grow into full-time employment after residency.

We have 16 D/FW Metroplex locations, and we are opening more. Our physicians see patients from 3 months through adult and provide family and urgent care including lab and x-ray in a convenient, friendly environment. We don't see Medicare or Medicaid patients.

Our company promotes from within so there are good professional growth opportunities. We also have a very high retention rate. More than half of our 30 full-time physicians have been with us more than five years.

We are physician-driven and some of the advantages of working at CareNow include excellent compensation, paid malpractice, reasonable hours, set schedules, no hospital rounds, no after-hours call, outstanding support staff, and effective marketing programs.

We offer full-time physicians two-year contracts with a competitive salary, generous bonuses, health, life, dental, disability, 401k, paid vacation, paid CME time, CME reimbursement, and 100% malpractice insurance. Part-timers receive an excellent hourly rate and some bonuses.

Our ideal candidate is Texas licensed, three-year residency trained and board certified in family, emergency or internal medicine.

**If you are interested, email a CV to [sallyp@carenow.com](mailto:sallyp@carenow.com) or fax it to 972-745-0323, Attn: Sally. You may call Sally Peck at 972-906-8124 for more information or visit our website at [carenow.com](http://carenow.com).**

## CARILION HEALTH SYSTEM

Southwest Virginia



Carilion is the largest not for profit health system in Southwest Virginia, serving over 1.5 million people throughout the region with 8 hospitals, 82 clinics, 7 residency programs and 2 fellowship programs affiliated with UVA. Carilion is headquartered in Roanoke, Virginia a five time, "All America City". Southwest Virginia offers affordable living, ample outdoor recreational activities, cultural and professional opportunities. It is home to nationally and internationally acclaimed colleges and universities. Carilion offers a competitive salary, paid malpractice, vacation days, CME days and allowance, and a Student Loan Repayment Program for new residents. Carilion also offers physicians the freedom to devote adequate time to the care of their patients.

### FAMILY PRACTICE OPPORTUNITIES ARE AVAILABLE IN THE FOLLOWING SOUTHWEST VIRGINIA COMMUNITIES:

Rocky Mount, Va., Franklin County (FP)  
 Pearisburg, Va., Giles County (FP)  
 Roanoke, Va., (FP)  
 Bedford, Va., (Hospitalist)  
 Staunton, Va., Augusta County, (FP)  
 Christiansburg, Va.,  
 Montgomery County (FP/OB)  
 Galax, Va., (FP/OB)

Everyday we are finding better ways to care. Join us.

For more detailed information about these opportunities, please contact Andrea Henson, Physician Recruiter at (540) 224-5241 or email your CV and interest to [ahenson@carilion.com](mailto:ahenson@carilion.com) [www.carilion.com](http://www.carilion.com)

## CENTRAL CALIFORNIA FACULTY MEDICAL GROUP

California



### FAMILY MEDICINE PHYSICIAN

The University of California, San Francisco Fresno Medical Education Program and the Central California Faculty Medical Group are recruiting for a family physician to join the teaching faculty.

This flexible position provides opportunities for teaching, administration, clinical research, and community practice. Proficiency in hospital care and OB is preferred. UCSF Fresno has an exciting future that includes a new \$250,000,000 Regional Medical Center and a new \$27 Million education building. UCSF Fresno cares for a diverse, multicultural population in rural and urban settings. Opportunities with Correctional Medicine facilities also exist. The program is located in Fresno, California, a vibrant, growing, but affordable community in the Central California Valley just a short drive from Yosemite and other national parks.

**Interested candidates should send a CV and three references to: Diane O'Connor Physician Recruiting, CCFMG, 4910, E. Clinton Avenue, #101, Fresno, CA 93727-1505, FAX to (559) 453-5233, E-mail to [Diane.OConnor@ccfmg.org](mailto:Diane.OConnor@ccfmg.org)**

**Visit our websites: [www.fresno.ucsf.edu](http://www.fresno.ucsf.edu) [www.ccfmg.org](http://www.ccfmg.org)**

UCSF is an affirmative action / equal opportunity employer. The University undertakes affirmative action to assure equal employment opportunity for underutilized minorities and women, for persons with disabilities, and for covered veterans. "UCSF seeks candidates whose experience, teaching, research, or community service has prepared them to contribute to our commitment to diversity and excellence."

## CENTRAL MAINE MEDICAL CENTER

Maine

**MAINE:** Enjoy life the way it should be in a family medicine friendly state. Rural positions are available with Rumford Hospital, which is located in western Maine and is in affiliation with Central Maine Medical Center. As a family physician, you'll find excellent support including medical student loan assistance, attractive call schedule, competitive salary and highly qualified, friendly colleagues.

**Please forward your CV to: Julia Lauver, Central Maine Medical Center, 300 Main Street, Lewiston, ME 04240; call 800/445-7431; email [jlauver@cmhc.org](mailto:jlauver@cmhc.org); or fax 207/795-5696. Not a J1 opportunity.**

## CENTRAL MAINE MEDICAL CENTER

Lewiston/Auburn, ME

**MAINE:** Enjoy life the way it should be in a family medicine friendly state. Family Health Care Associates, a well-established private group practice in the Lewiston/Auburn area, is seeking a BE/BC family practitioner to join its six physician group. Generous medical student loan assistance is available with this outpatient-only opportunity.

**Interested candidates should forward CV and cover letter to: Julia Lauver, Central Maine Medical Center, 300 Main Street, Lewiston, ME 04240; call 800/445-7431; email [jlauver@cmhc.org](mailto:jlauver@cmhc.org); or fax 207/795-5696. Not a J1 opportunity.**

## DOOR COUNTY MEMORIAL HOSPITAL

Door County, WI

### OUTSTANDING FAMILY PRACTICE OPPORTUNITY

Wisconsin's Door County Peninsula is often referred to as the Cape Cod of the Midwest. Sandy beaches, breath taking scenery and family-friendly communities make Door County a place you will want to call home.

Door County offers a playground for all seasons. This area boasts eleven golf courses, hundreds of miles of hiking and biking trails, dozens of beaches, horseback riding, camping and boating are just part of the fun. Imagine yourself chartering a boat and spending the afternoon grappling with a trophy salmon or brown trout on Lake Michigan. Maybe you would prefer to stroll along the scenic shorefronts or take a sunset cruise after a fulfilling day at the clinic. With thousands of acres of nature preserves and parks, the possibilities are endless. From season to season and shore to shore, Door County has it all.

The new Family Practitioner will join North Shore Medical Clinic, a department of Door County Memorial Hospital. The hospital offers a full range of services and specialties including a skilled nursing facility for long-term care and rehabilitation services, key services include cardiac rehabilitation, cancer treatment, diagnostic imaging; physical and occupational therapy; respiratory care and rehabilitation; surgical/outpatient services, emergency/urgent care services; and a birthing center. Call coverage would be 1:8.

The new physician will receive an attractive two-year income guarantee, signing bonus, relocation package, and comprehensive benefit package. This area will also qualify for rural loan repayment.

**For further details, contact: Colleen Schmidt @ 800-859-6570 or email [ColleenSchmidt1@execpc.com](mailto:ColleenSchmidt1@execpc.com).**

## EMERGENCY SERVICE PARTNERS

East Texas

### URGENT CARE PHYSICIAN

Competitive guaranteed compensation with paid malpractice/tail coverage. Staff physician needed for express care unit of the emergency department in Palestine Texas. 3 bed unit with dedicated nursing staff. 11a-11p. Collegial environment with partnership track democratic group.

Please contact Gretchen Moen with Emergency Service Partners, LP toll free at 888-800-8237 x316 or via email [Gretchen@eddocs.com](mailto:Gretchen@eddocs.com).



## FREEMAN HEALTH SYSTEM

Parsons, KS

### FP/OB or FP Only

Employment by Freeman Health System, Competitive Salary with Bonus plus an Excellent Benefits Package.

- Share office space with a group of primary care practitioners in Parsons, KS
- Admit patients to Labette County Medical Center
- FP/OB will share call with OB's and FP's
- FP Only will share call with other FP's
- Lab and x-ray on site.
- Do your own procedures in the office or at the hospital

### Freeman Health System – 170 Employed Physicians in all specialties there when you need them.

- Refer patients to the Freeman Heart, Neurospine and Cancer Institutes, 40-bed ICU, Level III NICU, Level II Trauma, Physical Rehab, Pain Management or Dialysis, plus two Psychiatric units for gero and adult patients.
- Full time Critical Care physicians in the ICU and hospitalists for inpatient care if you need them

### Parsons, Kansas

College community with lots of cultural amenities and a wonderful auditorium civic center.-Great place to raise a family – Good Public and Private Schools – Low crime rate

Please contact Nancy at 800-353-6812 or fax 417-347-9320 or email: [njpaul@freemanhealth.com](mailto:njpaul@freemanhealth.com)

## GREAT BROOK VALLEY HEALTH CENTER, INC.

Worcester, MA



Exciting opportunity for experienced family physicians to work either at a community health center in Framingham, Massachusetts; or in Worcester, Massachusetts. The Candidate must be friendly, compassionate and have a good sense of humor. Individual will provide primary and urgent care. The successful candidate will have excellent clinical and interpersonal skills and sensitivity to multicultural issues. Experience with electronic medical records preferred. Mass License required. Bilingual (English/Spanish and/or English/Portuguese) preferred. Language skills in ASL(American Sign Language) a plus. Competitive salary and benefits.

Send resume to Human Resources Dept., Great Brook Valley Health Center, 19 Tacoma Street, Worcester, MA 01605. EOE/AA/ADA. FAX: 508-853-8593. Email: [patricia\\_potter@greatbrook.org](mailto:patricia_potter@greatbrook.org).

## GUNDERSEN LUTHERAN HEALTH SYSTEM

Wisconsin and Iowa

**Wisconsin and Iowa Family Medicine.** Lutheran Health System is a large, multi-specialty group practice with over 500 medical and associate staff based in La Crosse, Wisconsin. Our service to the region includes over 20 regional clinics throughout Southwestern Wisconsin, Northeastern Iowa, and Southeastern Minnesota.

Fully accredited residency programs, a certified level II trauma center, consistent Top 100 institution ranking, and the official designation as the western campus of the University of Wisconsin Schools of Medicine and Nursing exemplify the high level of quality within the GLHS system. La Crosse is a college town that has an area population of about 100,000 and is unequalled in the Upper Midwest for its natural beauty along the Mississippi River.

### Current Openings

Waukon, IA

Decorah, IA

West Union, IA

Hillsboro, WI

Independence, WI

Prairie du Chien, WI

Sparta, WI

Tomah, WI

Viroqua, WI

**For more info, contact: Gundersen Lutheran Health System, Paula Stoner, Medical Staff, Recruitment, 608-775-4242, 800-362-9567 x54242, [pjstoner@gundluth.org](mailto:pjstoner@gundluth.org), [www.gundluth.org](http://www.gundluth.org)**

## ILLINOIS PRIMARY HEALTH CARE ASSOCIATES

Illinois



Community health centers located throughout the state of Illinois are seeking a Family Practitioner. Community health centers provide comprehensive health care services to diverse medically underserved populations and can give you the satisfaction that comes from helping those who need you the most. Competitive compensation, good benefits, malpractice insurance, CME, paid vacations and holidays. Health centers in Chicago area may require Spanish speaking candidates. Some health centers may qualify for loan repayment.

**Interested candidates can send their CV to 542 S. Dearborn Street, Suite 900, Chicago, IL 60605; fax: 312-692-3035; email [smosquera@iphca.org](mailto:smosquera@iphca.org). For more information, visit [www.iphca.org](http://www.iphca.org).**

## LIFELONG MEDICAL CARE

California

### Adult Medicine and Geriatric

Lifelong Medical Care seeks committed, team oriented physicians to provide quality healthcare, participate in team approach & CQI methods. Candidates must be board certified W/current CA license.

**Fax resumes: 510-981-4192; [jobs@lifelongmedical.org](mailto:jobs@lifelongmedical.org). Check our website at [www.lifelongmedical.org](http://www.lifelongmedical.org)**

## MAINEGENERAL HEALTH

Waterville, ME

Scenic Central Maine College Town! We currently have both Private Practice and Hospital-based openings for BC/BE Family Physicians. Full- and part-time positions available providing a full range of inpatient and outpatient services including some of the following specialties: adult medicine, obstetrics and gynecology, newborn and pediatric care, geriatric and nursing home care, addiction medicine, and integrative family medicine. Some teaching positions also available. Hospitalist coverage provided.

Send your CV to Lisa Nutter at [lisa.nutter@mainegeneral.org](mailto:lisa.nutter@mainegeneral.org), call 1-800-344-6662, 207-872-4666, fax: 207-872-4665 for more information or visit [www.mainegeneral.org](http://www.mainegeneral.org).

## MARQUETTE GENERAL HEALTH SYSTEM

Escanaba, MI

Michigan's Upper Peninsula offers medical directorship opportunity for board certified family physician to join existing practice in Escanaba, Michigan. Position provides hospital and clinic patient care along with administrative responsibilities.

Also seeking experienced AOBFP certified osteopathic family physician to join well-established, community-based, unopposed AOA/ACGME accredited 6/6/6 program in Marquette, Michigan. Duties include seeing patients three half-days per week, office and hospital precepting of residents and medical students, assisting in overseeing curriculum.

Opportunities for Emergency Physicians for 12 to 24 hours shifts at Grandview Health System in Ironwood, Michigan. Board certification in Family Practice, Emergency Medicine or other comparable experience.

Upper Michigan boasts unlimited recreation opportunities in a four-season environment. Great place to raise a family with numerous outdoor opportunities.

Employed positions with competitive compensation and benefit package available.

Contact: Mike Gokey, Marquette General Health System, 580 W. College Avenue, Marquette, MI 49855; 906-225-6919, fax, 906-225-3031, email: [mgokey@mgh.org](mailto:mgokey@mgh.org)

For more information visit [www.mgh.org](http://www.mgh.org)

## MERCY MEDICAL CENTER-DES MOINES

Des Moines, IA



Mercy Medical Center is looking for a BC/BE Geriatrician to work in a "Virtual" Geriatric Clinic. Geriatric Fellowship training preferred. Physician will visit long term care and assisted living facilities. Benefit and Salary package are strong and highly competitive.

Located in Iowa's capitol city, Mercy Medical Center-Des Moines is a 917 bed comprehensive health care facility located on three campuses.

The Des Moines area offers it's over 400,000 residents nationally acclaimed schools, safe neighborhoods, affordable housing, cultural amenities and abundant recreational opportunities.

For more information on the Des Moines area try the following web sites: [www.seedesmoines.com](http://www.seedesmoines.com) or [www.desmoinesmetro.com](http://www.desmoinesmetro.com)

## MARSHFIELD CLINIC

Wisconsin



MARSHFIELD CLINIC

1000 North Oak Avenue  
Marshfield, WI 54449-5777

Marshfield Clinic in Wisconsin has openings for BC/BE Family Practice Physicians. Marshfield Clinic is a 700+ physician-led multi-specialty group practice. We currently have Urgent Care openings at our Marshfield, Rice Lake and Ladysmith Centers, Inpatient and outpatient practices at our Merrill, Cornell, Rice Lake and Menomonie Centers. ER/UC practices at our Park Falls and Rice Lake Centers. There is an opening in Eau Claire for Neuromuscular Skeletal Family Practice Physicians. We have outpatient only practices at our Athens, Park Falls, Phillips and Mosinee clinics. Below are descriptions of the communities where we currently have openings.

- \* Merrill is a city of 10,000 located about 20 miles north of Wausau.
- \* Park Falls and Phillips are located in Northern Wisconsin and are known for their many outdoor activities.
- \* Ladysmith is a community of 4,500 located on the scenic and recreational Flambeau River in Northwestern Wisconsin.
- \* Mosinee is a community of about 4,000 situated on the banks of the Wisconsin River in Central Wisconsin.
- \* Rice Lake is a welcoming community of 9,500 located in northwest Wisconsin. Within an hour and half drive to Minneapolis/St. Paul area.
- \* Athens is a safe community of 1000 within 25 miles of Marshfield and Wausau.
- \* Cornell is a community of about 1,300 and it offers ample opportunity for hiking, biking, swimming and camping.
- \* The area population for Eau Claire is 80,000. Within an hour and half drive to Minneapolis/St. Paul area.
- \* Marshfield has a population of 20,000. This center is the tertiary center for the Marshfield Clinic system.

We provide a competitive salary and benefits; fully vested retirement plan; 401K plan; malpractice, health, dental, life, and disability insurance; four weeks paid vacation, first year; two weeks CME with up to \$5,800 allowance; generous relocation and more!

**Please Contact: Sandy Heeg, Physician Recruiter, [heeg.sandra@marshfieldclinic.org](mailto:heeg.sandra@marshfieldclinic.org), call 715-221-9781, fax 715-221-9779**

## MAYO HEALTH SYSTEM

Wabasha, MN

### OUTSTANDING FAMILY PRACTICE OPPORTUNITY

Minnesota is often referred to as the Land of 10,000 Lakes. With the backdrop of the Mississippi River and the breath taking scenery of the Bluffs, the family-friendly community of Wabasha, Minnesota will make it a place you will want to call home.

Minnesota offers a playground for all seasons. This area boasts golf courses, hundreds of miles of hiking and biking trails, boating and fishing, horseback riding, and camping are just part of the fun. Imagine yourself chartering a boat and spending the afternoon grappling with a wall-eye on the Mississippi River. Maybe you would prefer to stroll along the scenic shorefronts or take a sunset cruise after a fulfilling day at the clinic. With thousands of acres of nature preserves and parks, the possibilities are endless. From season to season Wabasha, Minnesota has it all.

The new Family Practitioner will join the medical staff of St. Elizabeth's Medical Center, an affiliate of Ministry Healthcare and become an employee of the Wabasha Clinic. Wabasha Clinic is an off campus location of Lake City Medical Center – Mayo Health System. Our 10 physicians, two physician assistants, three nurse practitioners and a nurse practitioner/midwife work in a fairly new, 18,000 square foot facility attached to a hospital. In addition, we have an "in house" general surgeon who also performs C-sections. Some of our providers regularly see patients in Lake City Medical Center's other off campus locations in Alma, Wisconsin and Plainview, Minnesota. Among the three sites, we have approximately 40,000 patient visits a year. Our current midwife is on call and backed up by one of three physicians who have interest in and are trained in obstetrics. Call rotation in Family Practice is approximately 1 in 7 with the first round of call being provided by Mayo Clinic residents.

**Mayo Health System** is a network of clinics and hospitals in more than 60 communities in Iowa, Minnesota and Wisconsin. Our providers have the opportunity to know their patients in an atmosphere that promotes quality, safe and effective care. Every Mayo Health System clinic and hospital has access to the expertise, professional growth opportunities and resources available through Mayo Clinic. We offer a competitive salary and benefits package in a friendly and rewarding environment.

**For further details, contact: Colleen Schmidt @ 800-859-6570 or email [Colleen@ColleenSchmidt.com](mailto:Colleen@ColleenSchmidt.com).**

## MERCY HEALTH NETWORK-NORTH IOWA

Seven North Iowa communities



### Nine Family Medicine Opportunities in a Growing Network

**Mercy Medical Center-North Iowa:** Enthusiastic Family Physicians needed for thriving rural north central Iowa communities. Our network of nine affiliated hospitals, 45 clinics and our 346-bed regional referral center offer several practice options. Obstetrics required in Algona, Emmetsburg and New Hampton. No Obstetrics in Ackley, Clear Lake or Hampton. Obstetrics is optional for three new permanent "system locum tenens" positions, each of which can be based in Mason City or another network community. Enjoy competitive compensation, a comprehensive benefits package and a lifestyle that epitomizes the best of Midwest living. **Your owe it to yourself to learn more!**

Contact Denise Siemers, Physician Recruitment Leader, Mercy Medical Center-North Iowa, 1000 4th Street SW, Mason City, IA 50401. Please e-mail CV to [siemersd@mercyhealth.com](mailto:siemersd@mercyhealth.com) or call toll free: (888) 877-5551, [www.mercynorthiowa.com](http://www.mercynorthiowa.com)

E.O.E. Will consider J-1 and H-1b applicants.

## NATIONAL RURAL RECRUITMENT & RETENTION NETWORK

Nationwide

### FIND OVER 4,500 COMMUNITIES IN 46 STATES AT [HTTP://WWW.3RNET.ORG](http://www.3rnet.org)

3R Net members at non-profit state organizations in 46 states are eager to tell you more about the opportunities that are currently available, and what it's like to live and practice there. The 3R Net is supported by federal and state funding, so there is no cost to you.

Members of the 3RNet partner with the National Health Service Corps (NHSC), and can help identify positions that qualify for both the NHSC's Federal Loan Repayment Program, as well as for the many State Loan Repayment Programs that are also available.

Only you know what is important to you and your family. Our members can help you identify communities that will be a good match with your personal and professional goals. We can connect you with those who know their states the best - the people who live there!

Now is the time to explore the many opportunities that await you. Go to [www.3rnet.org](http://www.3rnet.org) today for more information -- Yes, one stop for opportunities in 46 states.

AL, AK, AR, AZ, CA, CO, CT, DE, GA, HI, IA, ID, IL, IN, KS, KY, LA, MA, MD, MI, MN, MO, MS, MT, NC, ND, NE, NH, NM, NV, NY, OH, OR, PA, SC, SD, TN, TX, UT, VA, VT, WA, WI, WV, WY

For more info, contact: 800-787-2512, 608-687-3993 Fax, [info@3rnet.org](mailto:info@3rnet.org), [www.3rnet.org](http://www.3rnet.org)



## NORTH COUNTRY COMMUNITY HEALTH CENTER

Flagstaff, Holbrook, AZ



### Family Practice Physicians

Do you enjoy mountains, deserts and amazing geography? Come enjoy the benefits of living in a small town on the Colorado Plateau. Live and practice medicine in a family-friendly community with an emphasis on quality of life.

North Country Community Health Center is a non-profit, family-centered clinic serving Northern Arizona. We are seeking a Family Practice physician for our Flagstaff and our Holbrook offices. Holbrook is a loan payback qualified location.

We have eight offices stretched across the high country of Arizona along old Route 66. Our main office is in Flagstaff. Other clinics include Holbrook, Winslow, Ash Fork, Seligman, St. Johns, Springerville and Grand Canyon National Park.

North Country CHC offers a generous benefit package including Medical, Dental, Vision, 125B, 401K, LTD, and Life. Employees earn generous paid time off and holidays.

**Mail, fax, or email resume, three references and wage requirements to: Mail: NCCHC Attn. Human Resources, PO Box 3630, Flagstaff, AZ 86003-3630. Fax: 928-774-7066. Email to: [jobs@northcountryhc.org](mailto:jobs@northcountryhc.org).**

## NORTHEAST COMMUNITY CLINIC

Los Angeles, CA



Our mission is to provide comprehensive, quality health care services to our communities, Regardless of financial status. Our motivation is to help make a difference and improve the quality of peoples' lives - Not just their physical health.

We are an outpatient services facility that has experienced tremendous growth and expansion. In addition to our clinic sites, we also have school based and community center sites allowing better access for our patients. We provide the following services: General Medicine, Pediatrics, CHDP Physicals, Sports Physicals, Immunizations, Prenatal Care – CPSP, Family Planning, WIC Exams, Pregnancy Tests, HIV Testing, Mammograms, Nutrition, Laboratory, Health Education, and Laser Tattoo Removal.

We offer enrollment assistance for the uninsured and we accept most all major health plans. Our goal is to treat every patient, but due to our growth, we are in great need of more Providers. We are seeking Licensed and Board Certified Family Practice Physicians, preferably Bilingual (English/Spanish) skills.

We offer competitive salary, excellent health and dental benefits, loan repayment program services, and CME to name a few. To explore your career opportunities at NECC, please fax or e-mail your CV.

We are also offering Moonlighting positions to 2nd and 3rd Year Residents, with possible employment opportunities upon completion of their Residency Programs.

**For more details please contact Griselda Fernandez at [resumes@necc.md](mailto:resumes@necc.md), call 626-457-6913, fax 626-457-5535**

## OHIO ASSOCIATION OF COMMUNITY HEALTH CENTERS

Ohio



### ENJOY THE WORK – LOVE THE MISSION!

**Who:** Leaders  
**What:** Family Practice Providers  
**When:** Immediately  
**Where:** Ohio – 30 community health centers at over 100 sites – both rural and urban areas  
**Why:** Would you like to be a part of a great organization, work in state-of-the-art facilities with well-trained support staff, and help meet the needs that you saw when you chose medicine as a career? Do loan repayment assistance (state and federal programs), competitive salary, and an excellent benefit package sound appealing?  
**How:** Check our [www.ohiochc.org](http://www.ohiochc.org) for more details.

The Ohio Association of Community Health Centers represents Ohio's 30 community health centers at over 100 sites in both urban and rural areas throughout the state. In 2005, community health centers provided care to over 320,000 Ohioans and recorded well over 1,000,000 patient visits. Ohio's CHCs employ over 170 doctors, 37 dentists, more than 350 nurses and approximately 1,700 total staff positions in areas where quality professionals are in short supply.

**For more info, contact: Peter J. LaBianca, M.S., Director, Member Services, Ohio Association of Community Health Centers, 4150 Indianola Ave., Columbus, Ohio 43214, (614) 884-3101, Toll free: (888) 884-3101, Fax: (614) 884-3108, [plabianca@ohiochc.org](mailto:plabianca@ohiochc.org), <http://www.ohiochc.org/>**

The Ohio Association of Community Health Centers (OACHC) is a not-for-profit professional trade association representing Ohio's Federally Qualified Health Centers. OACHC is dedicated to the promotion of high-quality, cost effective health care with a special focus on Ohioans living in medically underserved areas.

## OREGON MEDICAL GROUP

Eugene, OR



**COMMUNITY:** Your new practice is located in the Willamette Valley between the breathtaking scenery of the Cascade Mountains and the Oregon Coast range. This family centered community is touted for its livability, pleasant climate, cultural diversity, quality of professional services, and recreational activities including: salmon and trout fishing, sailing, kayaking, skiing, hiking and biking.

Eugene is home to the University of Oregon. Eugene has excellent public and private schools, including a French, Japanese and Spanish immersion option within the public school system.

**OREGON MEDICAL GROUP (OMG)** is a physician owned group of physicians, physician extenders, and healthcare professionals staffing thirteen clinical sites. This 103 physician strong, primary care based, multi-specialty group is currently seeking a **BC/BE-Family Practice physician** to join 33 other Family Practitioners in providing for the needs of the organization's 102,000-membership/patient base. Practice encompasses all aspects of outpatient Family Practice medicine. No hospital rounding as a Hospitalist program is in place, and no Obstetrics.

We offer an initial competitive income guarantee with incentive bonus, comprehensive benefits including paid malpractice, retirement and relocation assistance.

**Contact [dmorris@oregonmed.net](mailto:dmorris@oregonmed.net) or call (800) 982-6699. [www.oregonmedicalgroup.com](http://www.oregonmedicalgroup.com)**

## RENOWN HEALTH

---

Reno, NV



Renown Health, located in Reno, Nevada, is seeking BC/BE Family Physicians for our Medical Group locations. Our competitive package includes excellent salary and full benefits.

Please contact **Chris King**, 775-982-4249 and/or e-mail to [cking@renown.org](mailto:cking@renown.org). EOE - No J-1/H1-B visa opportunities available. Visit [www.renown.org](http://www.renown.org) for additional information.

## SALEM CLINIC, P.C.

---

Salem, OR

Salem Clinic, P.C., Oregon's leading physician owned multispecialty medical practice is expanding the family practice department. Salem Clinic offers a balanced professional and personal lifestyle with partnership opportunity, comprehensive benefit package and competitive income guarantee. Call 1:8. The Medical Group Management Association has rated the Salem Clinic as a top "better performing medical clinic" for the last eight years. Community: 141K, excellent school system, higher education systems, capitol of Oregon. One hour to the Oregon Coast and Cascade Mountains, 45 minutes to Portland.

Visit our Web site at: [salemclinic.org](http://salemclinic.org). Please forward, FAX or E-Mail your CV to: **Connie Finicle**, Salem Clinic, P.C., 2020 Capitol St. NE, Salem, OR 97301; (503) 399-2470; FAX: (503) 375-7429; E-Mail: [conniefinicle@salemclinic.org](mailto:conniefinicle@salemclinic.org)

## SELECT, INC.

---

Bowling Green, KY

**We recruit all specialties, nationwide**

Dedicated, caring recruiters, intimate client relationships, and growing reputation for success make Select Practice Opportunity "America's Choice in Physician Placement Services." From understanding candidate preferences, to conducting thorough research for clients, Select scans the states to find the perfect match for physicians and hospitals alike.

For more information, contact: **Tim Leigh**, President, P.O. Box 706, Bowling Green, KY 42102-0706, 877-499-9889, 877-855-0618 Fax, [tim@selectprofessional.com](mailto:tim@selectprofessional.com)

## SETON HIGHLAND LAKES HOSPITAL & CLINICS

Burnet, Marble Falls & Horseshoe Bay, TX

Board Certified or Board Eligible Family Medicine Physician wanted for a busy clinic practice located in the Highland Lakes area of Texas. The clinic is affiliated with the Seton Highland Lakes Hospital, a member of the Seton Healthcare Network and Ascension Health, the largest not-for-profit health system in the United States. Practice will include both clinic and hospital work. This full time employed position offers generous benefits including malpractice coverage, medical and dental, retirement, vacation, CME time and life and disability insurance. You will also be given an annual allowance for professional dues and CME expenses. Compensation will be an attractive base salary and monthly incentive payments based on quality indicators and MGMA production benchmarks.

Located in the heart of the Central Texas Hill Country, The Highland Lakes Region is known for its natural beauty and is rich with history from Indians to Outlaws to the granite that was used in the construction of the Texas State Capital. With 1,800 square miles of lakes and hills the Highland Lakes Region is one of the largest playgrounds in Texas. Adventure, recreation, fun in the sun and hill country hospitality awaits you in the Highland Lakes communities that include Burnet, Marble Falls and Horseshoe Bay. There's plenty to do and see in the Highland Lakes area! From panoramic fields of bluebonnets and wildflowers, American Bald eagles soaring above Lake Buchanan to a shoot out in an old west town, a ride through the Hill Country on a steam train, or a relaxing tour through a vineyard, your days will be filled with lots of Texas fun!

Located approximately 1 hour from Austin and 1.5 hours from San Antonio, the Highland Lakes area is easily within reach of many cultural, entertainment, shopping and dining opportunities.

**For more information contact: Seton Highland Lakes, Scott Fuller, 512-715-3009 [sfuller@seton.org](mailto:sfuller@seton.org)**



## SOLANTIC WALK-IN URGENT CARE

Jacksonville, Orlando, Ft. Lauderdale, FL



**CHECK US OUT.** Want to practice medicine and leave the hassles to us?

Solantic is a Jacksonville, FL based chain of urgent care centers with locations throughout the state. We offer urgent care, occupational health, wellness services and a real focus on customer satisfaction. Currently we have 13 locations with plans to open 11 more in 2007.

### Clinical Opportunity

- Treat a wide variety of episodic conditions
- Digital X-ray, lab and Solantic Rx prescription services on-site
- On-site management to handle administrative issues
- Patient satisfaction survey results reported to you for the patients you treat

### Compensation and Benefits

- Competitive hourly rates and performance incentive bonuses
- Employer sponsored medical insurance offered
- Employer paid dental and life insurance provided
- 401k plan
- Annual CME, Florida licensure, NICA and DEA fees reimbursed
- 100% of malpractice insurance provided

### Lifestyle Consideration

- Three and four day work weeks
- Opportunity to work additional shifts
- 10 days of paid time off during first year
- No call or hospital rounds

**For More Info. Contact: Solantic walk-in urgent care, Physician Recruiting, (904) 223-2320, [physicianrecruitment@solantic.com](mailto:physicianrecruitment@solantic.com), [www.solantic.com](http://www.solantic.com)**

**SOUTHWEST MEDICAL ASSOCIATES**

Las Vegas, NV

100% outpatient Adult Medicine practice! Join 50 BC/BE Internal Medicine and Family physicians in a 180-physician multispecialty group. No call, no weekends, no nights!

We seek BC Family Practice/Internal Medicine physicians with superior diagnostic and preventive medicine skills to join our team!

Physicians work together in teams but manage their own panel of patients Monday-Friday. SMA Hospitalists manage inpatients 24/7. The patient population is an adult panel of all ages including geriatrics and some older adolescents and can be customized for interest areas. Work in attractive/modern buildings and enjoy an electronic medical record environment. Full time management staff, digital radiology and onsite laboratory services add conveniences at our 12 clinic locations throughout the Las Vegas area.

We offer:

- Market competitive salary, (reviewed yearly and compared to market), plus attractive bonus plan
- Comprehensive fringe benefits package which includes: medical, dental and life insurance, STD/LT disability, professional liability insurance, matching 401K, stock purchase plan, 3-5 weeks paid vacation, 5 days paid CME, \$3,000.00 annual CME allowance, 7 personal days, and 11 paid holidays.

Las Vegas offers:

- The best in entertainment and cultural options with close proximity amenities in CA, AZ, UT
- One of the most affordable places to live in the Southwest, with NO STATE INCOME TAX,
- Award winning master-planned communities and a lower cost of living than many metropolitan cities.
- 300-plus days of sunshine, championship golf, hiking, skiing, boating, five-star restaurants, and endless attractions and entertainment.

**For more information visit our Websites [www.smalv.com](http://www.smalv.com) or [www.sierrahealth.com](http://www.sierrahealth.com) or contact Helen Mackenzie – 888-832-2417 or 702-242-7122, [Helen.mackenzie@sierrahealth.com](mailto:Helen.mackenzie@sierrahealth.com)**

**ST. JOSEPH HEALTHCARE**

Southern New Hampshire

Family Practice Physicians...In Nashua we can make your practice perfect! Enjoy four-season recreation with no sales or income tax. Relax in a safe family setting close to Boston, mountains and seacoast. We are looking to add an additional outstanding, BC Family Physician to do out-patient primary care (no obstetrics) in one of our busy, five area practices. Join our expanding, single-specialty group with excellent referral relationships. Benefit from a team oriented work environment with a 1:12 Call, after hours nurse triage service and Hospitalist support. Affiliate with a progressive community hospital providing state-of-the-art diagnostic services and a high quality "Magnet status" nursing staff. Receive an attractive salary with excellent benefits and incentive opportunity. Check us out at [www.stjosephhospital.com](http://www.stjosephhospital.com).

**For additional information or to submit your CV contact: Sharon McAllister, phone: (603) 595-5300 ext. #63230; fax: (603) 598-2464 or e-mail: [shmcallister@sjh-nh.org](mailto:shmcallister@sjh-nh.org) No J-1 positions available.**

## ST. MARY'S FAMILY PRACTICE CLINIC

Evansville, IN

### Family Practitioner

St. Mary's Family Practice Clinic, located on the hospital campus, currently seeks a BC/BE family practitioner to join a staff of 8 physicians. The Family Practice Clinic provides Primary Care, OB/GYN, and Pediatric Services with a patient population of approximately 19,000 to 20,000 per year. The facility includes 20 exam rooms and 2 procedure rooms for a total of 10,500 square feet.

This position offers a nationally competitive salary, student loan repayment assistance, along with many other great benefits including malpractice insurance, health/dental insurance, disability insurance, life insurance and an outstanding pension plan.

**For more information, contact Kathy Rothschild, Physician Recruiter, at 812-485-7962 or send your CV to KARothschild@stmarys.org**

## ST. MARY'S REGIONAL MEDICAL CENTER

Lewiston, ME

St. Mary's Regional Medical Center, a 233-bed Acute Care Hospital, is seeking board eligible/board certified family physician to join employed practice. This exceptional opportunity offers a competitive salary, excellent benefit package, student loan repayment, paid malpractice insurance, and relocation assistance. You and your family can enjoy a lifestyle full of cultural, academic and recreational activities in a place where values, community and collegiality actually have meaning.

**Please send CV to the contact to Debra McKinley, Physician Recruiter, St. Mary's Regional Medical Center, 95 Campus Avenue, Ste 27, Lewiston, ME 04240. Fax: 207-777-8847, E-Mail: dmckinley@sochs.com, or call 800-862-1766**

## TANNER HEALTH SYSTEM

Atlanta, GA



Tanner Health System, located 25 miles west of Atlanta, GA, is a 3 hospital not-for-profit healthcare system serving the western Georgia and eastern Alabama areas. As our region's premier healthcare leader, we have dedicated more than 50 years of service to our patients, medical staff, employees and the communities we serve. With more than 1,800 employees and capital expansions at all of our facilities, Tanner continues its tradition of innovation by ensuring that the residents we serve have access to the latest in medical technology. Tanner provides a wide range of comprehensive medical services including cancer care, rehabilitation, occupational health, home health and hospice. Tanner's maternity centers deliver more than 1,400 babies each year and approximately 6,000 surgeries are performed each year in Tanner facilities.

Traditional family medicine without OB with inpatient and outpatient responsibilities. Physician will be employed by Tanner Health System. 1:6 call.

**For More Information Contact: Tanner Health System, Eric Johnston, Physician Recruiter, 770-838-8729-office, 770-838-8713-fax ejohnston@tanner.org. Shellie Sherrod, Director-Physician Development, 770-836-9217-office, 770-838.8563-fax, ssherrod@tanner.org, 705 Dixie St. Carrollton, GA 30117, www.tanner.org**

## THE PORTLAND CLINIC

Portland, OR



### PARTNERSHIP OPPORTUNITY IN THE BEAUTIFUL PACIFIC NORTHWEST

The Portland Clinic is an independent, full-service medical clinic with over 60 physicians, and we have been treating generations of families for 85 years. We are the oldest multi-specialty medical group in the State of Oregon and enjoy an excellent reputation throughout the Northwest as a premier, quality, and financially stable medical group. Owned and operated by physicians, the Clinic, with its 4 offices strategically located in the growth areas of Portland, holds a dominant position in the local healthcare community. Surrounded by beauty, Portland is conveniently located just over an hour from wide sandy beaches in one direction, and the majestic Columbia River Gorge and world-class skiing in the other direction. Citizens of the greater Portland area are known to be friendly, active, and health-conscious, and there are many opportunities to enjoy both outdoor activities and other fine cultural amenities. Our physicians are a youthful, high quality, enthusiastic group that enjoy their work and each other. We are seeking BC/BE physicians to join us as we continue to grow our practice.

**Don't hesitate to get in contact with us. We would love to speak with you about what the future might hold! Please contact Jan Reid, Recruitment, 503-221-0161 x2112, [jreid@tpcllp.com](mailto:jreid@tpcllp.com)**

## TRI-STATE COMMUNITY HEALTH CENTER

Southcentral Pennsylvania

Tri-State Community Health Center, a growing multi-site Federally Qualified Health Center, is looking for full-time FP/IM Physicians. New facility opened in April 2006 in beautiful Southcentral Pennsylvania. Country living with the advantage of 1 to 2 hour drive to major metropolitan areas. Competitive salary and full benefits package.

**Send CV to: Attn: Sheila DeShong, 130 West High Street, Hancock, MD 21750, [sdeshong@tschc.com](mailto:sdeshong@tschc.com). Excellent opportunity!**

## UNITED MEDICAL CENTERS (TEXAS ASSOCIATION OF COMMUNITY HEALTH CENTERS)

Eagle Pass, TX

Family Medicine BE/BC in Eagle Pass, Texas \$105,000 to \$245,000 (In Base Pay and Productivity Incentives) PLUS FRINGE BENEFITS: Malpractice (FTCA); CME (Time off & stipend); 11 days holidays/Year; 13 days vacation/year; Health, Dental & Life Insurance; 13 Sick Leave/Year; Tax Sheltered Annuity. United Medical Centers is a Community Health Center in southwest Texas along the US/Mexico border with 7 different Clinic sites serving Eagle Pass, Del Rio and Bracketville, Texas.

Eagle Pass, a thriving city, offers excellent schools, affordable housing, a brand new 104-bed hospital, parks, great shopping and eating places, yet is within a 2 1/2 hour drive from all San Antonio has to offer!

**Contact: George Kypuros, Administrator/CEO, phone: (830) 773-8917, fax: (830) 773-6432, [gkypuros.umc@tachc.org](mailto:gkypuros.umc@tachc.org)**

## VALLEY BAPTIST MEDICAL CENTER

Brownsville, TX



### FAMILY PRACTICE OPPORTUNITY IN SOUTH TEXAS!! – EASY TO FIND - HARD TO LEAVE!

Valley Baptist Medical Center-Brownsville, a premier community health system, has identified a community need for two (2) BC/BE Family Medicine physicians in Brownsville, Texas. As a level III trauma center, this facility has over 80 years of tradition in caring for the community! Minutes from the beaches of South Padre Island and many other wonderful amenities!

This opportunity offers an employed position with a generous relocation package for the FM physician. The position will be amply rewarded with a competitive salary/benefit package. The lifestyle benefits of this new practice are considerable – enjoy a manageable workload and schedule; and live in a wonderful, scenic, cultural place like no where else!

The Rio Grande Valley, one of the fastest growing areas in Texas. Brownsville's population is 180,000 with the Valley's population over 1 million. It offers a unique quality of family oriented living, semi-tropical climate, sandy beaches, low cost of living with no state income tax and a host of cultural opportunities! Once you visit, we're sure you'll agree that this is one of the best places in the U.S. to call home!

**Please contact: Susan Kutac, Physician Recruiter, Valley Baptist Health System W: 800-471-9743, 956-389-6740; Fax 956-389-6746, Email: susan.kutac@valleybaptist.net**

## VERTEX STAFFING LLC

New York, New Hampshire



North Eastern US Family Practice/Internal Medicine opportunities. HPSA Candidates Welcome! We need flexible physicians looking for a career challenge. Positions are in varied locations from rural communities near mountains and lakes to city practices. We represent Hospitals and Medical Centers as well as private practices. Many are partnership track positions as well. The positions can demand everything from Primary Care to ER work in the same organization. Many organizations are HPSA designated and we represent non HPSA locations too.

We are recruiting currently for two Family Practice/Internal Medicine Physicians for a rural New York Community in the Adirondack Region and a community in the White Mountains of New Hampshire. (will accept HPSA designation). Many other Family Practice opportunities exist from the city and suburban locations to the seacoast and mountain regions. Openings exist now and new opportunities come up on a regular basis. When you work with Vertex Staffing ([www.vertexstaff.com](http://www.vertexstaff.com)) you will be assigned to a staffing consultant who will work with you through all stages of the interview process, from initial interview, through contract negotiation, acceptance, licensing and relocation if necessary.

**To be considered, send your CV immediately to [tim@vertexstaff.com](mailto:tim@vertexstaff.com) or call 603-658-8080 ext 205. You can also fax your CV to (603) 251-1057.**

## VIRGINIA PRIMARY CARE ASSOCIATION

Virginia, Maryland and West Virginia



BC/BE Family Medicine Physicians needed for growing Community Health Centers. Join this 115 site network of community-based centers providing full scope outpatient primary care services in a collegial atmosphere with supportive staff, established patient base, competitive salaries and benefits, and malpractice covered. Positions currently available include urban and rural locations throughout Virginia, with some in Maryland and West Virginia too. Current vacancies include rural communities in southwest, northwest, central, and coastal Virginia, and urban sites in south central Virginia, southwestern Virginia, and Tidewater areas.

**Please contact Karin Guye, ph. 800-966-8272 x 16 or e-mail: [kguye@vpca.com](mailto:kguye@vpca.com) or Thomas Gaskins, ph. 800-966-8272 x 13, or e-mail [tgaskins@vpca.com](mailto:tgaskins@vpca.com). [www.vpca.com](http://www.vpca.com)**

## WITT MARES CAREER SOLUTIONS

---

Southeastern Virginia



### Discover Our Lifestyle:

In Scenic Coastal region of Southeastern Virginia

Enjoy an outstanding lifestyle at work and at home

Join new and expanding practices and one of the nation's strongest healthcare providers. Be affiliated with a network of well-trained primary care physicians supported by over 200 Specialists.

Offers unique blend of hospital support, physician control, and community acknowledged need. Enjoy competitive compensation, benefit, and malpractice arrangements.

Quick access to beauty of nature, water activities and variety of cultural and sporting amenities.

Voted # 1 as best state to do business by Forbes, 2006.

And, # 2 place in the US to raise a family by Parenthood magazine.

Experience historical, cultural activities and sophisticated restaurants.

And discover an excellent quality of life.

**To learn more contact: Nicole Laroche, [nlaroche@wittmares.com](mailto:nlaroche@wittmares.com) (757) 223-7406**

## YAKIMA VALLEY FARM WORKERS CLINIC

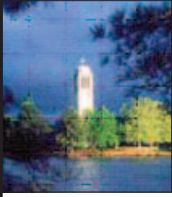
---

Spokane, WA

Established clinic with several locations in Washington and Oregon is seeking two FP physicians for our Spokane Washington, clinic. Our patients are our priority and our employees are our greatest asset. We welcome colleagues with similar ideals in providing quality care for Spokane area families. Spokane, with its tree-lined streets is located in one of the most beautiful areas of the country and just thirty minutes from Cour d'Alene, Idaho and the surrounding mountains and lakes offer unlimited recreational activities. Spokane also offers education opportunities at Gonzaga University. Must be BE/BC in family practice with interest in OB.

**To find out more about this friendly community and what it can offer respond to: Yakima Valley Farm Workers Clinic, Reply to: YVFWC, HR Department, PO Box 190, Toppenish, WA 98948 or call: 509-865-6175, extension 2284, fax: 509-865-2891, e-mail: [gracielavl@yvfwc.org](mailto:gracielavl@yvfwc.org) Or visit our website at: [www.yvfwc.com](http://www.yvfwc.com)**

# NORTH CAROLINA



## Family Medicine Opportunities

- \* Employed or private practice positions available.
- \* Progressive, growing hospital with young, active medical staff.
- \* Safe, family-oriented community.
- \* 35 minutes from the golf resort of Pinehurst.
- \* Less than two hours from beaches and metro areas.



If you would like to learn more about this opportunity and our community, please contact Melisa Ciarrocca at 1-800-764-7497 or by e-mail [melisa.ciarrocca@scotlandhealth.org](mailto:melisa.ciarrocca@scotlandhealth.org). You can also fax your curriculum vitae directly to 910-276-0470.



Visit [www.scotlandhealth.org](http://www.scotlandhealth.org) to learn more.



# WORK AND PLAY IN THE MOUNTAINS

**Saint Alphonsus Regional Medical Center** is looking for Family Physicians to join a 90+ member Primary Care medical group. We are looking for ABMS Board Certified/Eligible individuals with excellent clinical and communication skills.

## ABOUT SAINT ALPHONSUS IN BOISE, IDAHO

- State-of-the-art 381 bed Regional Medical and Surgical Center
- Advanced surgical specialties of General, Vascular, Orthopedic, Neurological and Cardiac Medicine
- Comprehensive Cancer Treatment Center
- Regionally acclaimed Diagnostic Radiology Services
- Regional Level II Trauma Center
- Service area population of 500,000

This position offers competitive salary and benefits. For more information about these exceptional opportunities, contact: Mary Beth Cooper at 1-800-309-5388, fax CV to 208-367-7964 or e-mail [marycoop@sarmc.org](mailto:marycoop@sarmc.org)

[www.saintalphonsus.org](http://www.saintalphonsus.org)

*This position does not qualify for J1 visa waiver applicants.*

## The Doctor Job PAIN RELIEF FOR YOUR JOB SEARCH

There are hundreds of physician jobs in every single metropolitan area in the country that are unadvertised and unavailable through recruiters. Finding these hidden jobs requires a proactive, aggressive job search. Every day, The Doctor Job helps our clients get up to 30-40 or more interviews in markets that recruiters call "saturated". We can help you, too.

[www.TheDoctorJob.com](http://www.TheDoctorJob.com) 1.800.591.4842



## Parma Community General Hospital

Parma Community General Hospital, a 348-bed, not-for-profit facility offering comprehensive medical care is now recruiting physicians for several specialties.

Located in Parma, Ohio, just minutes from Cleveland Hopkins Airport, with a service area of more than 350,000 people, the Hospital offers a full range of services including inpatient and outpatient surgery, 24-hour emergency care, Heart Center, Cancer Center, complete maternity care and outpatient testing and therapies.

For more information, contact Kari Rish at 440-743-2341.



[www.parmahospital.org](http://www.parmahospital.org)

# Baystate Health

baystatehealth.com

## **PRIMARY CARE OPPORTUNITIES** **Family Practice – Medicine/Pediatrics**

Baystate Health of Massachusetts is seeking outstanding academic physicians for multiple Primary Care/Clinician Educator opportunities in beautiful Western Massachusetts. Facilities include, but are not limited to:

**Brightwood Health Center** (Internal Medicine, Medicine/Pediatrics or Family Practice) is a full service health center, dedicated to providing excellent and compassionate care to a predominantly Hispanic and Latino community. The ideal candidate must be comfortable working with disabled, medically complicated and HIV patients.

**Mason Square Neighborhood Health Center** (Medicine/Pediatrics or Family Practice) is the primary ambulatory teaching site for Baystate's Medicine/Pediatrics Residency Program, one of the nation's longest established and best reputed programs, comprised of 31 residents, 12 clinician educators, 3 nurse practitioners and many subspecialty programs.

**PRIMARY CARE/RAPID CARE – Family Practice** Belchertown Adult Medicine & Pediatrics, located in Belchertown, MA, is seeking an additional Family Practice physician to join our group of 3 physicians to provide compassionate high quality healthcare to the families in the Belchertown community. All physicians are on staff at Baystate Mary Lane Hospital in Ware, MA and work closely with adult and pediatric specialists at both Mary Lane and Baystate Medical Center in Springfield. Inpatients for this practice are admitted to Baystate Mary Lane Hospital. Physician will also partner in providing services at the onsite Rapid Care Clinic. The ideal candidate will be BC/BE in Family Practice or Med/Peds and have a high interest in community involvement.

## **GENERAL OBSTETRICS & GYNECOLOGY** **Part-Time Opportunity**

Baystate Medical Practices + Mary Lane Ob/Gyn, located in Ware, Massachusetts, is expanding and seeking a part-time, 3 days per week (0.6 FTE) physician to join a practice of 2 physicians and an RN. Baystate + Mary Lane Ob/Gyn is a member of Baystate Affiliated Practice Organization, an affiliate of Baystate Health. Position includes shifts at several outpatient locations in Ware, Belchertown & Palmer, MA, with flexible hours. Deliveries & surgical procedures are performed at Baystate Mary Lane Hospital in Ware, MA, with an average of 200 births per year. Call is 1 weekday per week, and 1 weekend per month. 2007 residents are welcome to apply!

Baystate is one of New England's largest integrated multi-institutional healthcare systems and offers a coordinated continuum of hospital, physician, and home healthcare services. The campus is located in the beautiful Connecticut River valley of Western Massachusetts at the foothills of the Berkshires with convenient access to coastal New England, Vermont, and metropolitan Boston and New York. The area also supports a rich network of academic institutions including the University of Massachusetts, Amherst, Smith, Hampshire, and Mount Holyoke Colleges. The Baystate continuum includes Baystate Medical Center, Franklin Medical Center, and Baystate Mary Lane Hospital. BMC is designated a Magnet™ hospital for excellence in nursing services by the American Nurses Credentialing Center (ANCC). Baystate Health is ranked in the top 50 most highly integrated healthcare networks in the United States.

Baystate Mary Lane Hospital, a 31-bed facility in Ware, Massachusetts, provides quality patient care services to more than twelve Central Massachusetts communities. In addition to offering a wide spectrum of services from women's health, maternity and pediatrics to surgical, intensive care, and emergency care, Baystate Mary Lane Hospital also reaches out to its communities with programs such as the Adult Day Care Center and the Baystate Visiting Nurse Association & Hospice at Mary Lane Hospital. Located in a quiet, rural area off the Massachusetts Turnpike, Baystate Mary Lane Hospital is a true community hospital.

Interested applicants should submit a CV and cover letter to:

**John Larson, Senior Manager, Physician Recruitment, Baystate Health**  
**759 Chestnut Street, Suite S1578, Springfield, MA 01199**  
**Telephone: (413) 794-2571; Fax: (413) 794-5059; E-mail: john.larson@bhs.org**  
**EOE/AA**

**Baystate Medical Center and Tufts University School of Medicine**

# The Best of Both Worlds

## Great Earning Potential! (Six Opportunities)

MidMichigan Health has the right opportunity for you that combines the best of both worlds: A successful career and a rewarding home life. Opportunities exist at three of our four facilities and include both private and employed practices. Great opportunity for new graduates to grow in existing practices. Competitive compensation and opportunity to work with well-respected colleagues and specialists.

The communities vary from the rural opportunities in Clare and St. Louis, the small town of Alma, and the suburban experience in Midland. All three medical centers are part of MidMichigan Health, a growing health system located in a community that offers the best for any lifestyle. With MidMichigan Health, you can practice medicine and balance your personal life. It's the best of both worlds: A great place to live and work!

**Cecilia Jerome, Physician Recruitment Coordinator**  
800.444.6421; [recruitment@midmichigan.org](mailto:recruitment@midmichigan.org)

A Great Place to Live and Work  
The Best of Both Worlds  
[www.midmichigan.org/opportunities](http://www.midmichigan.org/opportunities)



### Exceptional Primary Care Opportunity

We are seeking a fourth BC/BE physician to join our thriving family practice group. We are one of seven primary care practices operated by Eastern Maine Medical Center, a 400-bed tertiary care center. Our skilled staff and providers work as an integrated team to provide patients with a full spectrum of family care. We offer a collegial atmosphere, modern office space, EMR, and reasonable call schedule. No emergency department coverage is required; nursing home care optional.

Bangor is an award-winning small city offering easy access to Maine's spectacular coast, lakes, and mountains. Schools rank among New England's best. Bangor is the regional hub for medicine, the arts, and commerce.

**For confidential consideration, please contact:**

Ann Homola  
phone 207-973-7444  
e-mail [emmccvs@emh.org](mailto:emmccvs@emh.org)  
[www.emmc.org](http://www.emmc.org)



TOGETHER We're Stronger



## FAMILY MEDICINE VERMONT

### Reinvigorate your career.

And discover a quintessential Vermont community.



VISTA | STAFFING SOLUTIONS

PHYSICIAN SEARCH AND CONSULTING

VISTA Physician Search and Consulting has a client seeking a BC/BE Family Medicine physician to provide outpatient medicine, as well as perform admitting and rounding for pediatric patients.

Practice benefits:

- Competitive pay and benefits
- Hospitalist and specialist support
- Four day work week

Location benefits:

- Located in the southern Green Mountains
- Breathtaking scenery, world-class recreation

Send CV with cover letter to Amanda Wint at [amanda.wint@vistastaff.com](mailto:amanda.wint@vistastaff.com) or call 800.366.1884 x 6511



## Make a Healthy Community... One Patient at a Time.

The Yakima Valley Farm Workers Clinic is looking for physicians who are interested in providing primary health care in a multicultural environment and who want to make a difference in the lives of others.

- We provide comprehensive health care services to over 20 community health centers in Washington and Oregon and are dedicated to providing our patients with the highest quality care and affordable health care options.
- We support our providers with a multi-disciplinary team approach and a strong support system.
- With facilities in both urban and rural areas of the beautiful Pacific Northwest there are communities to suit a variety of lifestyles.
- We offer competitive pay with a signing bonus. A comprehensive benefits package and relocation expenses are also included.

**If this opportunity interests you  
contact us at 877-983-9247 or  
providerjobs@yvwfc.org**



**Yakima Valley  
Farm Workers Clinic**  
*Committed to quality care for your family.*

# Ahh...



*Life in the  
Upper Midwest*

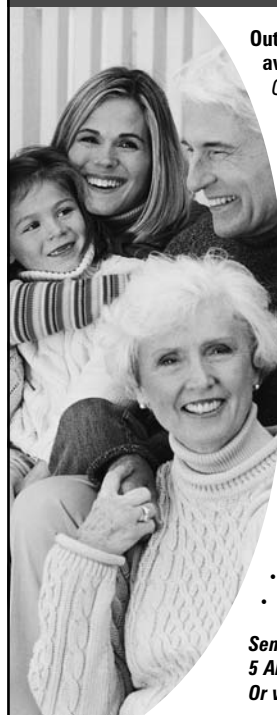
## Opportunities

- Family  
Medicine
- Hospitalist
- Integrative  
Therapy
- Urgent Care

Contact:  
Mike Hesch or  
Bonnie Guenther  
Franciscan Skemp Healthcare  
700 West Avenue South  
La Crosse, WI 54601  
800-269-1986  
FAX: 608-791-9898  
hesch.michael@mayo.edu or  
guenther.bonnie@mayo.edu  
[www.franciscanskemp.org](http://www.franciscanskemp.org)

**Franciscan Skemp**  
*Mayo Health System*

## Beautiful Seacoast Region of NH: Family Practice Physician Opportunities



**Outpatient and in/outpatient opportunities  
available in rapidly expanding market.**  
*Great call and salary/benefits package.*

**Immediate opening for a family practice  
physician to join an established integrated  
medicine practice.** *A hospital-affiliated  
integrative medicine center is looking to  
expand its medical staff. Special interest in  
women's health and holistic approach to  
care a plus.*

- No sales or income taxes
- Quaint and safe New England town
- Pristine beaches and great open water sailing
- Great four-season recreation opportunities
- Phillips Exeter Academy
- University of New Hampshire
- Amtrak service
- 1 hour from Boston and Portland, Maine
- 370 years of American history
- Wonderful sense of community
- Competitive salary and benefits
- Moving expenses covered
- Broad specialty and sub-specialty backup coverage

**Send CV to: Ron Goodspeed**  
**5 Alumni Drive Exeter, NH 03833**  
**Or via Email: [rgoodspeed@ehr.org](mailto:rgoodspeed@ehr.org)**

Visit [www.foreveryday.com](http://www.foreveryday.com) for more information